

POGGI[®]

trasmissioni meccaniche s.p.a.

Società unipersonale

soggetta ad attività di direzione e coordinamento di MP S.R.L.



Barre dentate e flange per pulegge dentate

Timing bars and flanges for timing pulleys

Zahnstangen und Bordscheiben für Zahnriemenscheiben

Barreaux dentés et flasques pour poulies dentées

Barras dentadas y guías para poleas dentadas

CATALOG 7715X





| Barre dentate e flange per pulegge dentate Timing bars and flanges for timing pulleys Zahnstangen und Bordscheiben für Zahnriemenscheiben Barreaux dentés et flasques pour poulies dentées Barras dentadas y guías para poleas dentadas | Pagina Page Seite Page Página |
|--|---|
| Barre dentate passo pollici Inch pitch timing bars Zahnstangen Zoll-Teilung Barreaux dentés pas en pouces Barras dentadas paso pulgadas | E-2 |
| Barre dentate HTD®, GT® e POLY CHAIN® GT HTD®, GT® and POLY CHAIN® GT timing bars HTD®, GT® und POLY CHAIN® GT Zahnstangen Barreaux dentés HTD®, GT® et POLY CHAIN® GT Barras dentadas HTD®, GT® y POLY CHAIN® GT | E-6 |
| Barre dentate RPP RPP timing bars RPP Zahnstangen Barreaux dentés RPP Barras dentadas RPP | E-12 |
| Barre dentate passo metrico T e AT Timing bars metric pitch T and AT Zahnstangen metrische Teilung T und AT Barreaux dentés pas métrique T et AT Barras dentadas paso métrico T y AT | E-15 |
| Flange per pulegge dentate Flanges for timing pulleys Bordscheiben zur Riemenführung Flasques pour poulies dentées Guías para poleas dentadas | E-20 |
| | |
| | |
| | |



Barre dentate passo pollici

Inch pitch timing bars

Zahnstangen Zoll-Teilung

Barreaux dentés pas en pouces

Barras dentadas paso pulgadas

| Novità | New | Neu | Nouveauté | Novedad |
|---|---|---|--|---|
| <p>Le caratteristiche delle nuove barre (Gr. 77), rispetto alle precedenti (Gr. 17), sono le seguenti:</p> <ul style="list-style-type: none"> - Aumento della gamma; - Aumento della lunghezza utile dentata Lu; - La possibilità di scelta del materiale, per alcuni passi, fra acciaio e alluminio. | <p>The main features of new bars (Item group 77) with regard to previous ones (item group 17) are:</p> <ul style="list-style-type: none"> - Range extension; - Enlargement of usable length Lu; - Possibility of choosing the material (steel or aluminium) in some bar pitches. | <p>Die Hauptmerkmale der neuen Zahnstangen (Produkt-Gruppe 77) im Vergleich zu den alten (Produkt-Gruppe 17) sind:</p> <ul style="list-style-type: none"> - Erweiterung des Bereiches; - Verlängerung der Nutzlänge Lu; - Für einige Teilungen kann das Material (Stahl oder Aluminium) ausgewählt werden. | <p>Les caractéristiques des nouveaux barreaux (code famille 77) par rapport aux précédents (code famille 17) sont les suivantes:</p> <ul style="list-style-type: none"> - Enrichissement de la gamme; - Allongement de la longueur dentée utile Lu; - Possibilité de choisir la matière (acier ou aluminium) pour quelques pas. | <p>Las características de las nuevas barras (grupo producto 77) con respecto de las precedentes (grupo producto 17) son las siguientes:</p> <ul style="list-style-type: none"> - Ampliación de la gama; - Alargamiento de la longitud dentada útil Lu; - Posibilidad de elegir el material (acero o aluminio) para unos pasos. |
| <p>Se ancora in stock saranno consegnate barre del gruppo merceologico 17.</p> | <p>We will deliver bars of item group 17 until stocks are sold out.</p> | <p>Solang im Vorrat vorhanden werden die Zahnstangen der Produkt-Gruppe 17 geliefert.</p> | <p>Nous livrerons les barreaux de la famille 17 jusqu'à l'épuisement du stock.</p> | <p>Entregaremos las barras del grupo 17 hasta el agotamiento del stock.</p> |
| <p>Le barre MXL sono a scorta solo in alluminio idoneo al trattamento anodico.</p> | <p>Stock MXL timing bars are only made of aluminium suitable for the anodic oxidation.</p> | <p>Die MXL Zahnstangen werden nur aus Aluminium hergestellt und sind für die anodische Oxidation geeignet.</p> | <p>Les barreaux MXL ne sont fabriqués qu'en aluminium apte au traitement anodique.</p> | <p>Las barras MXL sólo se fabrican de aluminio apto para la oxidación anódica.</p> |
| <p>Barre con numero denti non a catalogo fornibili su richiesta.</p> | <p>Please consult us for timing bars with teeth numbers not included in the standard range.</p> | <p>Bei Zahnstangen mit Sonderzähnezahlen bitte nachfragen.</p> | <p>Veillez nous consulter pour les barreaux dentés avec des nombres de dents hors standard.</p> | <p>Los rogamos consulten para las barras dentadas con números de dientes no incluidos en la gama estándar.</p> |

MXL Passo - Pitch - Teilung - Pas - Paso 0,080" (2,032 mm)

| Codice Item number Codierung Code Código | Descrizione Designation Bezeichnung Désignation Referencia | N° denti N. of teeth Anzahl der Zähne Nombre de dents Cantidad de dientes | Dp mm | De mm | Lu mm | L mm | Codice Item number Codierung Code Código | Descrizione Designation Bezeichnung Désignation Referencia | N° denti N. of teeth Anzahl der Zähne Nombre de dents Cantidad de dientes | Dp mm | De mm | Lu mm | L mm |
|--|--|--|----------|----------|----------|---------|--|--|--|----------|----------|----------|---------|
| 77M010 | 10 MXL 80 AL | 10 | 6,47 | 5,97 | 80 | 100 | 77M050 | 50 MXL 200 AL | 50 | 32,34 | 31,83 | 200 | 210 |
| 77M011 | 11 MXL 80 AL | 11 | 7,12 | 6,60 | 80 | 100 | 77M060 | 60 MXL 200 AL | 60 | 38,81 | 38,30 | 200 | 210 |
| 77M012 | 12 MXL 80 AL | 12 | 7,76 | 7,26 | 80 | 100 | 77M064 | 64 MXL 200 AL | 64 | 41,40 | 40,89 | 200 | 210 |
| 77M013 | 13 MXL 80 AL | 13 | 8,41 | 7,90 | 80 | 100 | 77M065 | 65 MXL 200 AL | 65 | 42,04 | 41,53 | 200 | 210 |
| 77M014 | 14 MXL 80 AL | 14 | 9,06 | 8,56 | 80 | 100 | 77M070 | 70 MXL 200 AL | 70 | 45,28 | 44,78 | 200 | 200 |
| 77M015 | 15 MXL 80 AL | 15 | 9,70 | 9,19 | 80 | 100 | 77M072 | 72 MXL 200 AL | 72 | 46,57 | 46,05 | 200 | 200 |
| 77M016 | 16 MXL 125 AL | 16 | 10,35 | 9,83 | 125 | 145 | 77M075 | 75 MXL 200 AL | 75 | 48,51 | 48,01 | 200 | 200 |
| 77M017 | 17 MXL 125 AL | 17 | 11,00 | 10,49 | 125 | 145 | 77M081 | 81 MXL 200 AL | 81 | 52,39 | 51,89 | 200 | 200 |
| 77M018 | 18 MXL 125 AL | 18 | 11,64 | 11,12 | 125 | 145 | 77M084 | 84 MXL 200 AL | 84 | 54,33 | 53,82 | 200 | 200 |
| 77M019 | 19 MXL 125 AL | 19 | 12,29 | 11,78 | 125 | 145 | 77M090 | 90 MXL 200 AL | 90 | 58,21 | 57,71 | 200 | 200 |
| 77M020 | 20 MXL 125 AL | 20 | 12,94 | 12,42 | 125 | 145 | 77M108 | 108 MXL 200 AL | 108 | 69,86 | 69,34 | 200 | 200 |
| 77M021 | 21 MXL 125 AL | 21 | 13,58 | 13,08 | 125 | 145 | 77M110 | 110 MXL 200 AL | 110 | 71,15 | 70,64 | 200 | 200 |
| 77M022 | 22 MXL 125 AL | 22 | 14,23 | 13,72 | 125 | 145 | | | | | | | |
| 77M023 | 23 MXL 125 AL | 23 | 14,88 | 14,38 | 125 | 145 | | | | | | | |
| 77M024 | 24 MXL 125 AL | 24 | 15,52 | 15,01 | 125 | 145 | | | | | | | |
| 77M025 | 25 MXL 125 AL | 25 | 16,17 | 15,67 | 125 | 145 | | | | | | | |
| 77M026 | 26 MXL 125 AL | 26 | 16,82 | 16,31 | 125 | 145 | | | | | | | |
| 77M027 | 27 MXL 125 AL | 27 | 17,46 | 16,94 | 125 | 145 | | | | | | | |
| 77M028 | 28 MXL 125 AL | 28 | 18,11 | 17,60 | 125 | 145 | | | | | | | |
| 77M029 | 29 MXL 175 AL | 29 | 18,76 | 18,24 | 175 | 190 | | | | | | | |
| 77M030 | 30 MXL 175 AL | 30 | 19,40 | 18,90 | 175 | 190 | | | | | | | |
| 77M032 | 32 MXL 175 AL | 32 | 20,70 | 20,19 | 175 | 190 | | | | | | | |
| 77M034 | 34 MXL 175 AL | 34 | 21,99 | 21,49 | 175 | 190 | | | | | | | |
| 77M035 | 35 MXL 175 AL | 35 | 22,64 | 22,12 | 175 | 190 | | | | | | | |
| 77M036 | 36 MXL 175 AL | 36 | 23,29 | 22,78 | 175 | 190 | | | | | | | |
| 77M038 | 38 MXL 175 AL | 38 | 24,58 | 24,08 | 175 | 190 | | | | | | | |
| 77M040 | 40 MXL 200 AL | 40 | 25,87 | 25,37 | 200 | 210 | | | | | | | |
| 77M042 | 42 MXL 200 AL | 42 | 27,17 | 26,67 | 200 | 210 | | | | | | | |
| 77M044 | 44 MXL 200 AL | 44 | 28,46 | 27,94 | 200 | 210 | | | | | | | |
| 77M045 | 45 MXL 200 AL | 45 | 29,11 | 28,60 | 200 | 210 | | | | | | | |
| 77M048 | 48 MXL 200 AL | 48 | 31,05 | 30,53 | 200 | 210 | | | | | | | |



Barre dentate passo pollici

Inch pitch timing bars

Zahnstangen Zoll-Teilung

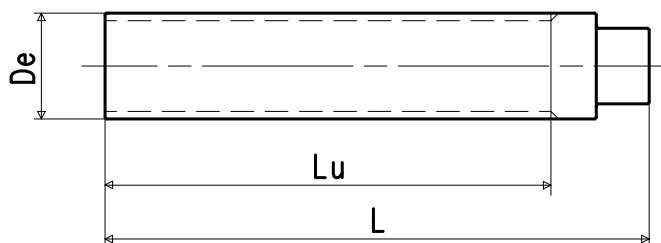
Barreaux dentés pas en pouces

Barras dentadas paso pulgadas

Tipo di materiale - Type of material - Werkstoff - Type de matière - Tipo de material:

AL = alluminio idoneo al trattamento anodico.
aluminium suitable for the anodic oxidation.
Aluminium für die anodische Oxidation geeignet.
aluminium apte au traitement anodique.
aluminio apto para la oxidación anódica.

ST = acciaio - steel - Stahl - acier - acero



XL Passo - Pitch - Teilung - Pas - Paso 1/5" (5,080 mm)

| Codice Item number Codierung Code Código | Descrizione Designation Bezeichnung Désignation Referencia | N° denti N. of teeth Anzahl der Zähne Nombre de dents Cantidad de dientes | Dp mm | De mm | Lu mm | L mm |
|--|--|--|----------|----------|----------|---------|
| 77A010 | 10 XL 125 AL | 10 | 16,17 | 15,66 | 125 | 145 |
| 77A010X | 10 XL 125 ST | 10 | 16,17 | 15,66 | 125 | 145 |
| 77A011 | 11 XL 125 AL | 11 | 17,79 | 17,28 | 125 | 145 |
| 77A011X | 11 XL 125 ST | 11 | 17,79 | 17,28 | 125 | 145 |
| 77A012 | 12 XL 175 AL | 12 | 19,40 | 18,90 | 175 | 190 |
| 77A012X | 12 XL 175 ST | 12 | 19,40 | 18,90 | 175 | 190 |
| 77A013 | 13 XL 175 AL | 13 | 21,02 | 20,51 | 175 | 190 |
| 77A013X | 13 XL 175 ST | 13 | 21,02 | 20,51 | 175 | 190 |
| 77A014 | 14 XL 175 AL | 14 | 22,64 | 22,13 | 175 | 190 |
| 77A014X | 14 XL 175 ST | 14 | 22,64 | 22,13 | 175 | 190 |
| 77A015 | 15 XL 175 AL | 15 | 24,26 | 23,75 | 175 | 190 |
| 77A015X | 15 XL 175 ST | 15 | 24,26 | 23,75 | 175 | 190 |
| 77A016 | 16 XL 200 AL | 16 | 25,87 | 25,36 | 200 | 210 |
| 77A016X | 16 XL 200 ST | 16 | 25,87 | 25,36 | 200 | 210 |
| 77A017 | 17 XL 200 AL | 17 | 27,49 | 26,98 | 200 | 210 |
| 77A017X | 17 XL 200 ST | 17 | 27,49 | 26,98 | 200 | 210 |
| 77A018 | 18 XL 200 AL | 18 | 29,11 | 28,60 | 200 | 210 |
| 77A018X | 18 XL 200 ST | 18 | 29,11 | 28,60 | 200 | 210 |
| 77A019 | 19 XL 200 AL | 19 | 30,72 | 30,22 | 200 | 210 |
| 77A019X | 19 XL 200 ST | 19 | 30,72 | 30,22 | 200 | 210 |
| 77A020 | 20 XL 200 AL | 20 | 32,34 | 31,83 | 200 | 210 |
| 77A020X | 20 XL 200 ST | 20 | 32,34 | 31,83 | 200 | 210 |
| 77A021 | 21 XL 200 AL | 21 | 33,96 | 33,45 | 200 | 210 |
| 77A021X | 21 XL 200 ST | 21 | 33,96 | 33,45 | 200 | 210 |
| 77A022 | 22 XL 200 AL | 22 | 35,57 | 35,07 | 200 | 210 |
| 77A022X | 22 XL 200 ST | 22 | 35,57 | 35,07 | 200 | 210 |
| 77A023 | 23 XL 200 AL | 23 | 37,19 | 36,60 | 200 | 210 |
| 77A023X | 23 XL 200 ST | 23 | 37,19 | 36,60 | 200 | 210 |
| 77A024 | 24 XL 200 AL | 24 | 38,81 | 38,30 | 200 | 210 |
| 77A024X | 24 XL 200 ST | 24 | 38,81 | 38,30 | 200 | 210 |
| 77A025 | 25 XL 200 AL | 25 | 40,43 | 39,92 | 200 | 210 |
| 77A025X | 25 XL 200 ST | 25 | 40,43 | 39,92 | 200 | 210 |
| 77A026 | 26 XL 200 AL | 26 | 42,04 | 41,53 | 200 | 210 |
| 77A026X | 26 XL 200 ST | 26 | 42,04 | 41,53 | 200 | 210 |
| 77A027 | 27 XL 200 AL | 27 | 43,66 | 43,15 | 200 | 210 |
| 77A027X | 27 XL 200 ST | 27 | 43,66 | 43,15 | 200 | 210 |
| 77A028 | 28 XL 200 AL | 28 | 45,28 | 44,77 | 200 | 200 |
| 77A028X | 28 XL 200 ST | 28 | 45,28 | 44,77 | 200 | 200 |
| 77A029 | 29 XL 200 AL | 29 | 46,89 | 46,39 | 200 | 200 |
| 77A029X | 29 XL 200 ST | 29 | 46,89 | 46,39 | 200 | 200 |
| 77A030 | 30 XL 200 AL | 30 | 48,51 | 48,00 | 200 | 200 |
| 77A030X | 30 XL 200 ST | 30 | 48,51 | 48,00 | 200 | 200 |
| 77A031 | 31 XL 200 AL | 31 | 50,13 | 49,62 | 200 | 200 |
| 77A031X | 31 XL 200 ST | 31 | 50,13 | 49,62 | 200 | 200 |

| Codice Item number Codierung Code Código | Descrizione Designation Bezeichnung Désignation Referencia | N° denti N. of teeth Anzahl der Zähne Nombre de dents Cantidad de dientes | Dp mm | De mm | Lu mm | L mm |
|--|--|--|----------|----------|----------|---------|
| 77A032 | 32 XL 200 AL | 32 | 51,74 | 51,24 | 200 | 200 |
| 77A032X | 32 XL 200 ST | 32 | 51,74 | 51,24 | 200 | 200 |
| 77A033 | 33 XL 200 AL | 33 | 53,36 | 52,76 | 200 | 200 |
| 77A033X | 33 XL 200 ST | 33 | 53,36 | 52,76 | 200 | 200 |
| 77A034 | 34 XL 200 AL | 34 | 54,98 | 54,47 | 200 | 200 |
| 77A034X | 34 XL 200 ST | 34 | 54,98 | 54,47 | 200 | 200 |
| 77A035 | 35 XL 200 AL | 35 | 56,60 | 56,09 | 200 | 200 |
| 77A035X | 35 XL 200 ST | 35 | 56,60 | 56,09 | 200 | 200 |
| 77A036 | 36 XL 200 AL | 36 | 58,21 | 57,70 | 200 | 200 |
| 77A036X | 36 XL 200 ST | 36 | 58,21 | 57,70 | 200 | 200 |
| 77A037 | 37 XL 200 AL | 37 | 59,83 | 59,32 | 200 | 200 |
| 77A037X | 37 XL 200 ST | 37 | 59,83 | 59,32 | 200 | 200 |
| 77A038 | 38 XL 200 AL | 38 | 61,45 | 60,94 | 200 | 200 |
| 77A038X | 38 XL 200 ST | 38 | 61,45 | 60,94 | 200 | 200 |
| 77A039 | 39 XL 200 AL | 39 | 63,06 | 62,56 | 200 | 200 |
| 77A039X | 39 XL 200 ST | 39 | 63,06 | 62,56 | 200 | 200 |
| 77A040 | 40 XL 200 AL | 40 | 64,68 | 64,17 | 200 | 200 |
| 77A040X | 40 XL 200 ST | 40 | 64,68 | 64,17 | 200 | 200 |
| 77A041 | 41 XL 200 AL | 41 | 66,30 | 65,79 | 200 | 200 |
| 77A041X | 41 XL 200 ST | 41 | 66,30 | 65,79 | 200 | 200 |
| 77A042 | 42 XL 200 AL | 42 | 67,91 | 67,41 | 200 | 200 |
| 77A042X | 42 XL 200 ST | 42 | 67,91 | 67,41 | 200 | 200 |
| 77A043 | 43 XL 200 AL | 43 | 69,53 | 69,02 | 200 | 200 |
| 77A043X | 43 XL 200 ST | 43 | 69,53 | 69,02 | 200 | 200 |
| 77A044 | 44 XL 200 AL | 44 | 71,15 | 70,64 | 200 | 200 |
| 77A044X | 44 XL 200 ST | 44 | 71,15 | 70,64 | 200 | 200 |
| 77A045 | 45 XL 200 AL | 45 | 72,77 | 72,26 | 200 | 200 |
| 77A045X | 45 XL 200 ST | 45 | 72,77 | 72,26 | 200 | 200 |
| 77A048 | 48 XL 200 AL | 48 | 77,62 | 77,11 | 200 | 200 |
| 77A048X | 48 XL 200 ST | 48 | 77,62 | 77,11 | 200 | 200 |
| 77A050 | 50 XL 200 AL | 50 | 80,85 | 80,34 | 200 | 200 |
| 77A050X | 50 XL 200 ST | 50 | 80,85 | 80,34 | 200 | 200 |
| 77A052 | 52 XL 200 AL | 52 | 84,08 | 83,58 | 200 | 200 |
| 77A052X | 52 XL 200 ST | 52 | 84,08 | 83,58 | 200 | 200 |
| 77A056 | 56 XL 200 AL | 56 | 90,55 | 90,04 | 200 | 200 |
| 77A056X | 56 XL 200 ST | 56 | 90,55 | 90,04 | 200 | 200 |
| 77A058 | 58 XL 200 AL | 58 | 93,79 | 93,28 | 200 | 200 |
| 77A058X | 58 XL 200 ST | 58 | 93,79 | 93,28 | 200 | 200 |
| 77A060 | 60 XL 200 AL | 60 | 97,02 | 96,51 | 200 | 200 |
| 77A060X | 60 XL 200 ST | 60 | 97,02 | 96,51 | 200 | 200 |
| 77A064 | 64 XL 200 AL | 64 | 103,49 | 102,98 | 200 | 200 |
| 77A064X | 64 XL 200 ST | 64 | 103,49 | 102,98 | 200 | 200 |
| 77A072 | 72 XL 200 AL | 72 | 116,43 | 115,92 | 200 | 200 |
| 77A072X | 72 XL 200 ST | 72 | 116,43 | 115,92 | 200 | 200 |



Barre dentate passo pollici

Inch pitch timing bars

Zahnstangen Zoll-Teilung

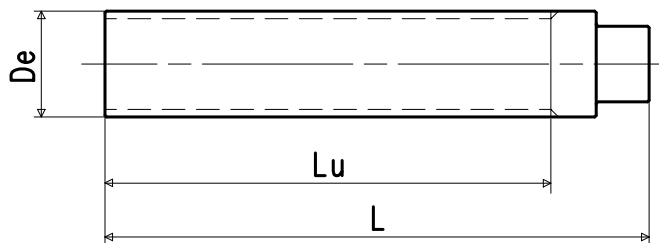
Barreaux dentés pas en pouces

Barras dentadas paso pulgadas

Tipo di materiale - Type of material - Werkstoff - Type de matière - Tipo de material:

AL = alluminio idoneo al trattamento anodico.
aluminium suitable for the anodic oxidation.
Aluminium für die anodische Oxidation geeignet.
aluminium apte au traitement anodique.
aluminio apto para la oxidación anódica.

ST = acciaio - steel - Stahl - acier - acero



Se ancora in stock saranno consegnate barre del gruppo merceologico 17.

We will deliver bars of item group 17 until stocks are sold out.

Solang im Vorrat vorhanden werden die Zahnstangen der Produkt-Gruppe 17 geliefert.

Nous livrerons les barreaux de la famille 17 jusqu'à l'épuisement du stock.

Entregaremos las barras del grupo 17 hasta el agotamiento del stock.

L Passo - Pitch - Teilung - Pas - Paso 3/8" (9,525 mm)

| Codice Item number Codierung Code Código | Descrizione Designation Bezeichnung Désignation Referencia | N° denti N. of teeth Anzahl der Zähne Nombre de dents Cantidad de dientes | Dp mm | De mm | Lu mm | L mm |
|--|--|--|----------|----------|----------|---------|
| 77B010 | 10 L 200 AL | 10 | 30,32 | 29,56 | 200 | 210 |
| 77B010X | 10 L 200 ST | 10 | 30,32 | 29,56 | 200 | 210 |
| 77B011 | 11 L 200 AL | 11 | 33,35 | 32,59 | 200 | 210 |
| 77B011X | 11 L 200 ST | 11 | 33,35 | 32,59 | 200 | 210 |
| 77B012 | 12 L 200 AL | 12 | 36,38 | 35,62 | 200 | 210 |
| 77B012X | 12 L 200 ST | 12 | 36,38 | 35,62 | 200 | 210 |
| 77B013 | 13 L 200 AL | 13 | 39,41 | 38,65 | 200 | 210 |
| 77B013X | 13 L 200 ST | 13 | 39,41 | 38,65 | 200 | 210 |
| 77B014 | 14 L 200 AL | 14 | 42,45 | 41,68 | 200 | 210 |
| 77B014X | 14 L 200 ST | 14 | 42,45 | 41,68 | 200 | 210 |
| 77B015 | 15 L 200 AL | 15 | 45,48 | 44,72 | 200 | 200 |
| 77B015X | 15 L 200 ST | 15 | 45,48 | 44,72 | 200 | 200 |
| 77B016 | 16 L 200 AL | 16 | 48,51 | 47,75 | 200 | 200 |
| 77B016X | 16 L 200 ST | 16 | 48,51 | 47,75 | 200 | 200 |
| 77B017 | 17 L 200 AL | 17 | 51,54 | 50,78 | 200 | 200 |
| 77B017X | 17 L 200 ST | 17 | 51,54 | 50,78 | 200 | 200 |
| 77B018 | 18 L 200 AL | 18 | 54,57 | 53,81 | 200 | 200 |
| 77B018X | 18 L 200 ST | 18 | 54,57 | 53,81 | 200 | 200 |
| 77B019 | 19 L 200 AL | 19 | 57,61 | 56,84 | 200 | 200 |
| 77B019X | 19 L 200 ST | 19 | 57,61 | 56,84 | 200 | 200 |
| 77B020 | 20 L 200 AL | 20 | 60,64 | 59,88 | 200 | 200 |
| 77B020X | 20 L 200 ST | 20 | 60,64 | 59,88 | 200 | 200 |
| 77B021 | 21 L 200 AL | 21 | 63,67 | 62,91 | 200 | 200 |
| 77B021X | 21 L 200 ST | 21 | 63,67 | 62,91 | 200 | 200 |
| 77B022 | 22 L 200 AL | 22 | 66,70 | 65,94 | 200 | 200 |
| 77B022X | 22 L 200 ST | 22 | 66,70 | 65,94 | 200 | 200 |
| 77B023 | 23 L 200 AL | 23 | 69,73 | 68,97 | 200 | 200 |
| 77B023X | 23 L 200 ST | 23 | 69,73 | 68,97 | 200 | 200 |
| 77B024 | 24 L 200 AL | 24 | 72,77 | 72,00 | 200 | 200 |
| 77B024X | 24 L 200 ST | 24 | 72,77 | 72,00 | 200 | 200 |

| Codice Item number Codierung Code Código | Descrizione Designation Bezeichnung Désignation Referencia | N° denti N. of teeth Anzahl der Zähne Nombre de dents Cantidad de dientes | Dp mm | De mm | Lu mm | L mm |
|--|--|--|----------|----------|----------|---------|
| 77B025 | 25 L 200 AL | 25 | 75,80 | 75,04 | 200 | 200 |
| 77B025X | 25 L 200 ST | 25 | 75,80 | 75,04 | 200 | 200 |
| 77B026 | 26 L 200 AL | 26 | 78,83 | 78,07 | 200 | 200 |
| 77B026X | 26 L 200 ST | 26 | 78,83 | 78,07 | 200 | 200 |
| 77B027 | 27 L 200 AL | 27 | 81,86 | 81,10 | 200 | 200 |
| 77B027X | 27 L 200 ST | 27 | 81,86 | 81,10 | 200 | 200 |
| 77B028 | 28 L 200 AL | 28 | 84,89 | 84,13 | 200 | 200 |
| 77B028X | 28 L 200 ST | 28 | 84,89 | 84,13 | 200 | 200 |
| 77B030 | 30 L 200 AL | 30 | 90,96 | 90,20 | 200 | 200 |
| 77B030X | 30 L 200 ST | 30 | 90,96 | 90,20 | 200 | 200 |
| 77B032 | 32 L 200 AL | 32 | 97,02 | 96,26 | 200 | 200 |
| 77B032X | 32 L 200 ST | 32 | 97,02 | 96,26 | 200 | 200 |
| 77B034 | 34 L 200 AL | 34 | 103,08 | 102,32 | 200 | 200 |
| 77B034X | 34 L 200 ST | 34 | 103,08 | 102,32 | 200 | 200 |
| 77B036 | 36 L 200 AL | 36 | 109,15 | 108,39 | 200 | 200 |
| 77B036X | 36 L 200 ST | 36 | 109,15 | 108,39 | 200 | 200 |
| 77B038 | 38 L 200 AL | 38 | 115,21 | 114,45 | 200 | 200 |
| 77B038X | 38 L 200 ST | 38 | 115,21 | 114,45 | 200 | 200 |
| 77B040 | 40 L 200 AL | 40 | 121,28 | 120,51 | 200 | 200 |
| 77B040X | 40 L 200 ST | 40 | 121,28 | 120,51 | 200 | 200 |



Barre dentate passo pollici

Inch pitch timing bars

Zahnstangen Zoll-Teilung

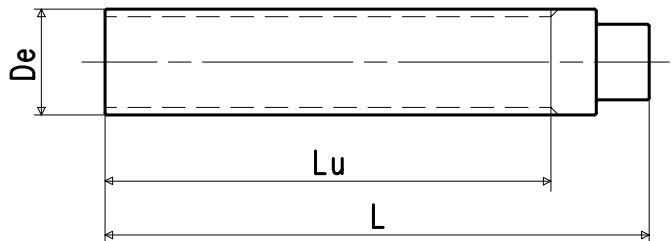
Barreaux dentés pas en pouces

Barras dentadas paso pulgadas

Tipo di materiale - Type of material - Werkstoff - Type de matière - Tipo de material:

AL = alluminio idoneo al trattamento anodico.
aluminium suitable for the anodic oxidation.
Aluminium für die anodische Oxidation geeignet.
aluminium apte au traitement anodique.
aluminio apto para la oxidación anódica.

ST = acciaio - steel - Stahl - acier - acero



Se ancora in stock saranno consegnate barre del gruppo merceologico 17.

We will deliver bars of item group 17 until stocks are sold out.

Solang im Vorrat vorhanden werden die Zahnstangen der Produkt-Gruppe 17 geliefert.

Nous livrerons les barreaux de la famille 17 jusqu'à l'épuisement du stock.

Entregaremos las barras del grupo 17 hasta el agotamiento del stock.

H Passo - Pitch - Teilung - Pas - Paso 1/2" (12,700 mm)

| Codice Item number Codierung Code Código | Descrizione Designation Bezeichnung Désignation Referencia | N° denti N. of teeth Anzahl der Zähne Nombre de dents Cantidad de dientes | Dp mm | De mm | Lu mm | L mm |
|--|--|--|----------|----------|----------|---------|
| 77C014 | 14 H 200 AL | 14 | 56,60 | 55,22 | 200 | 200 |
| 77C014X | 14 H 200 ST | 14 | 56,60 | 55,22 | 200 | 200 |
| 77C015 | 15 H 200 AL | 15 | 60,64 | 59,27 | 200 | 200 |
| 77C015X | 15 H 200 ST | 15 | 60,64 | 59,27 | 200 | 200 |
| 77C016 | 16 H 200 AL | 16 | 64,68 | 63,31 | 200 | 200 |
| 77C016X | 16 H 200 ST | 16 | 64,68 | 63,31 | 200 | 200 |
| 77C017 | 17 H 200 AL | 17 | 68,72 | 67,35 | 200 | 200 |
| 77C017X | 17 H 200 ST | 17 | 68,72 | 67,35 | 200 | 200 |
| 77C018 | 18 H 200 AL | 18 | 72,77 | 71,39 | 200 | 200 |
| 77C018X | 18 H 200 ST | 18 | 72,77 | 71,39 | 200 | 200 |
| 77C019 | 19 H 200 AL | 19 | 76,81 | 75,44 | 200 | 200 |
| 77C019X | 19 H 200 ST | 19 | 76,81 | 75,44 | 200 | 200 |
| 77C020 | 20 H 200 AL | 20 | 80,85 | 79,48 | 200 | 200 |
| 77C020X | 20 H 200 ST | 20 | 80,85 | 79,48 | 200 | 200 |
| 77C021 | 21 H 200 AL | 21 | 84,89 | 83,52 | 200 | 200 |
| 77C021X | 21 H 200 ST | 21 | 84,89 | 83,52 | 200 | 200 |
| 77C022 | 22 H 200 AL | 22 | 88,94 | 87,56 | 200 | 200 |
| 77C022X | 22 H 200 ST | 22 | 88,94 | 87,56 | 200 | 200 |
| 77C023 | 23 H 200 AL | 23 | 92,98 | 91,61 | 200 | 200 |
| 77C023X | 23 H 200 ST | 23 | 92,98 | 91,61 | 200 | 200 |
| 77C024 | 24 H 200 AL | 24 | 97,02 | 95,65 | 200 | 200 |
| 77C024X | 24 H 200 ST | 24 | 97,02 | 95,65 | 200 | 200 |
| 77C025 | 25 H 200 AL | 25 | 101,06 | 99,69 | 200 | 200 |
| 77C025X | 25 H 200 ST | 25 | 101,06 | 99,69 | 200 | 200 |
| 77C026 | 26 H 200 AL | 26 | 105,11 | 103,73 | 200 | 200 |
| 77C026X | 26 H 200 ST | 26 | 105,11 | 103,73 | 200 | 200 |
| 77C027 | 27 H 200 AL | 27 | 109,15 | 107,78 | 200 | 200 |
| 77C027X | 27 H 200 ST | 27 | 109,15 | 107,78 | 200 | 200 |
| 77C028 | 28 H 200 AL | 28 | 113,19 | 111,82 | 200 | 200 |
| 77C028X | 28 H 200 ST | 28 | 113,19 | 111,82 | 200 | 200 |

| Codice Item number Codierung Code Código | Descrizione Designation Bezeichnung Désignation Referencia | N° denti N. of teeth Anzahl der Zähne Nombre de dents Cantidad de dientes | Dp mm | De mm | Lu mm | L mm |
|--|--|--|----------|----------|----------|---------|
| 77C030 | 30 H 200 AL | 30 | 121,28 | 119,90 | 200 | 200 |
| 77C030X | 30 H 200 ST | 30 | 121,28 | 119,90 | 200 | 200 |
| 77C032 | 32 H 200 AL | 32 | 129,36 | 127,99 | 200 | 200 |
| 77C032X | 32 H 200 ST | 32 | 129,36 | 127,99 | 200 | 200 |
| 77C034 | 34 H 200 AL | 34 | 137,45 | 136,07 | 200 | 200 |
| 77C034X | 34 H 200 ST | 34 | 137,45 | 136,07 | 200 | 200 |
| 77C036 | 36 H 200 AL | 36 | 145,53 | 144,16 | 200 | 200 |
| 77C036X | 36 H 200 ST | 36 | 145,53 | 144,16 | 200 | 200 |
| 77C040 | 40 H 200 AL | 40 | 161,70 | 160,33 | 200 | 200 |
| 77C040X | 40 H 200 ST | 40 | 161,70 | 160,33 | 200 | 200 |
| 77C048 | 48 H 200 AL | 48 | 194,04 | 192,67 | 200 | 200 |
| 77C048X | 48 H 200 ST | 48 | 194,04 | 192,67 | 200 | 200 |



Barre dentate HTD®

HTD® timing bars

HTD® Zahnstangen

Barreaux dentés HTD®

Barras dentadas HTD®

| Novità | New | Neu | Nouveauté | Novedad |
|---|--|---|--|---|
| <p>Le caratteristiche delle nuove barre (Gr. 77), rispetto alle precedenti (Gr. 17), sono le seguenti:</p> <ul style="list-style-type: none"> - Aumento della gamma; - Aumento della lunghezza utile dentata Lu; - La possibilità di scelta del materiale, per alcuni passi, fra acciaio e alluminio. <p>Se ancora in stock saranno consegnate barre del gruppo merceologico 17.</p> <p>Le barre HTD® 3M sono a scorta solo in alluminio idoneo al trattamento anodico.</p> <p>Barre con numero denti non a catalogo fornibili su richiesta.</p> | <p>The main features of new bars (Item group 77) with regard to previous ones (item group 17) are:</p> <ul style="list-style-type: none"> - Range extension; - Enlargement of usable length Lu; - Possibility of choosing the material (steel or aluminium) in some bar pitches. <p>We will deliver bars of item group 17 until stocks are sold out.</p> <p>Stock HTD® 3M timing bars are only made of aluminium suitable for the anodic oxidation.</p> <p>Please consult us for timing bars with teeth numbers not included in the standard range.</p> | <p>Die Hauptmerkmale der neuen Zahnstangen (Produkt-Gruppe 77) im Vergleich zu den alten (Produkt-Gruppe 17) sind:</p> <ul style="list-style-type: none"> - Erweiterung des Bereiches; - Verlängerung der Nutzlänge Lu; - Für einige Teilungen kann das Material (Stahl oder Aluminium) ausgewählt werden. <p>Solang im Vorrat vorhanden werden die Zahnstangen der Produkt-Gruppe 17 geliefert.</p> <p>Die HTD® 3M Zahnstangen werden nur aus Aluminium hergestellt und sind für die anodische Oxidation geeignet.</p> <p>Bei Zahnstangen mit Sonderzähnezahlen bitte nachfragen.</p> | <p>Les caractéristiques des nouveaux barreaux (code famille 77) par rapport aux précédents (code famille 17) sont les suivantes:</p> <ul style="list-style-type: none"> - Enrichissement de la gamme; - Allongement de la longueur dentée utile Lu; - Possibilité de choisir la matière (acier ou aluminium) pour quelques pas. <p>Nous livrerons les barreaux de la famille 17 jusqu'à l'épuisement du stock.</p> <p>Les barreaux HTD® 3M ne sont fabriqués qu'en aluminium apte au traitement anodique.</p> <p>Veillez nous consulter pour les barreaux dentés avec des nombres de dents hors standard.</p> | <p>Las características de las nuevas barras (grupo producto 77) con respecto de las precedentes (grupo producto 17) son las siguientes:</p> <ul style="list-style-type: none"> - Ampliación de la gama; - Alargamiento de la longitud dentada útil Lu; - Posibilidad de elegir el material (acero o aluminio) para unos pasos. <p>Entregaremos las barras del grupo 17 hasta el agotamiento del stock.</p> <p>Las barras HTD® 3M sólo se fabrican de aluminio apto para la oxidación anódica.</p> <p>Los rogamos consulten para las barras dentadas con números de dientes no incluidos en la gama estándar.</p> |

HTD® 3M

Passo - Pitch - Teilung - Pas - Paso 3 mm

| Codice Item number Codierung Code Código | Descrizione Designation Bezeichnung Désignation Referencia | N° denti N. of teeth Anzahl der Zähne Nombre de dents Cantidad de dientes | Dp | De | Lu | L |
|--|--|--|-------|-------|-----|-----|
| | | | mm | mm | mm | mm |
| 7703M009 | 09 3M 80 AL | 9 | 8,59 | 7,83 | 80 | 100 |
| 7703M010 | 10 3M 80 AL | 10 | 9,55 | 8,79 | 80 | 100 |
| 7703M011 | 11 3M 80 AL | 11 | 10,50 | 9,74 | 80 | 100 |
| 7703M012 | 12 3M 125 AL | 12 | 11,46 | 10,70 | 125 | 145 |
| 7703M013 | 13 3M 125 AL | 13 | 12,41 | 11,65 | 125 | 145 |
| 7703M014 | 14 3M 125 AL | 14 | 13,37 | 12,61 | 125 | 145 |
| 7703M015 | 15 3M 125 AL | 15 | 14,32 | 13,56 | 125 | 145 |
| 7703M016 | 16 3M 125 AL | 16 | 15,28 | 14,52 | 125 | 145 |
| 7703M017 | 17 3M 125 AL | 17 | 16,23 | 15,47 | 125 | 145 |
| 7703M018 | 18 3M 125 AL | 18 | 17,19 | 16,43 | 125 | 145 |
| 7703M019 | 19 3M 125 AL | 19 | 18,14 | 17,38 | 125 | 145 |
| 7703M020 | 20 3M 175 AL | 20 | 19,10 | 18,34 | 175 | 190 |
| 7703M021 | 21 3M 175 AL | 21 | 20,05 | 19,29 | 175 | 190 |
| 7703M022 | 22 3M 175 AL | 22 | 21,01 | 20,25 | 175 | 190 |
| 7703M023 | 23 3M 175 AL | 23 | 21,96 | 21,20 | 175 | 190 |
| 7703M024 | 24 3M 175 AL | 24 | 22,92 | 22,16 | 175 | 190 |
| 7703M025 | 25 3M 175 AL | 25 | 23,87 | 23,11 | 175 | 190 |
| 7703M026 | 26 3M 175 AL | 26 | 24,83 | 24,07 | 175 | 190 |
| 7703M027 | 27 3M 200 AL | 27 | 25,78 | 25,02 | 200 | 210 |
| 7703M028 | 28 3M 200 AL | 28 | 26,74 | 25,98 | 200 | 210 |
| 7703M029 | 29 3M 200 AL | 29 | 27,69 | 26,93 | 200 | 210 |
| 7703M030 | 30 3M 200 AL | 30 | 28,65 | 27,89 | 200 | 210 |
| 7703M031 | 31 3M 200 AL | 31 | 29,60 | 28,84 | 200 | 210 |
| 7703M032 | 32 3M 200 AL | 32 | 30,56 | 29,80 | 200 | 210 |
| 7703M033 | 33 3M 200 AL | 33 | 31,51 | 30,75 | 200 | 210 |
| 7703M034 | 34 3M 200 AL | 34 | 32,47 | 31,71 | 200 | 210 |
| 7703M035 | 35 3M 200 AL | 35 | 33,42 | 32,66 | 200 | 210 |
| 7703M036 | 36 3M 200 AL | 36 | 34,38 | 33,62 | 200 | 210 |
| 7703M037 | 37 3M 200 AL | 37 | 35,33 | 34,57 | 200 | 210 |
| 7703M038 | 38 3M 200 AL | 38 | 36,29 | 35,53 | 200 | 210 |
| 7703M039 | 39 3M 200 AL | 39 | 37,24 | 36,48 | 200 | 210 |
| 7703M040 | 40 3M 200 AL | 40 | 38,20 | 37,44 | 200 | 210 |
| 7703M042 | 42 3M 200 AL | 42 | 40,11 | 39,35 | 200 | 210 |
| 7703M044 | 44 3M 200 AL | 44 | 42,02 | 41,26 | 200 | 210 |
| 7703M045 | 45 3M 200 AL | 45 | 42,97 | 42,21 | 200 | 210 |
| 7703M048 | 48 3M 200 AL | 48 | 45,84 | 45,08 | 200 | 200 |
| 7703M050 | 50 3M 200 AL | 50 | 47,75 | 46,99 | 200 | 200 |
| 7703M052 | 52 3M 200 AL | 52 | 49,66 | 48,90 | 200 | 200 |
| 7703M054 | 54 3M 200 AL | 54 | 51,57 | 50,81 | 200 | 200 |
| 7703M056 | 56 3M 200 AL | 56 | 53,48 | 52,72 | 200 | 200 |

| Codice Item number Codierung Code Código | Descrizione Designation Bezeichnung Désignation Referencia | N° denti N. of teeth Anzahl der Zähne Nombre de dents Cantidad de dientes | Dp | De | Lu | L |
|--|--|--|-------|-------|-----|-----|
| | | | mm | mm | mm | mm |
| 7703M060 | 60 3M 200 AL | 60 | 57,30 | 56,54 | 200 | 200 |
| 7703M062 | 62 3M 200 AL | 62 | 59,21 | 58,45 | 200 | 200 |
| 7703M064 | 64 3M 200 AL | 64 | 61,12 | 60,36 | 200 | 200 |
| 7703M066 | 66 3M 200 AL | 66 | 63,03 | 62,27 | 200 | 200 |
| 7703M068 | 68 3M 200 AL | 68 | 64,94 | 64,18 | 200 | 200 |
| 7703M070 | 70 3M 200 AL | 70 | 66,85 | 66,09 | 200 | 200 |
| 7703M072 | 72 3M 200 AL | 72 | 68,75 | 67,99 | 200 | 200 |



Barre dentate HTD®

HTD® timing bars

HTD® Zahnstangen

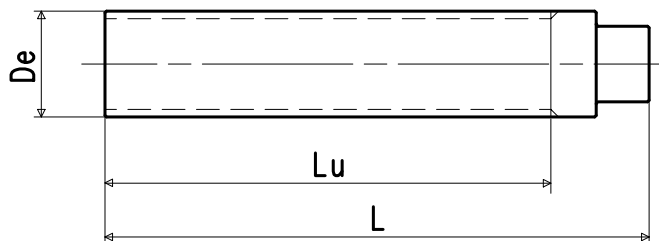
Barreaux dentés HTD®

Barras dentadas HTD®

Tipo di materiale - Type of material - Werkstoff - Type de matière - Tipo de material:

AL = alluminio idoneo al trattamento anodico.
aluminium suitable for the anodic oxidation.
Aluminium für die anodische Oxidation geeignet.
aluminium apte au traitement anodique.
aluminio apto para la oxidación anódica.

ST = acciaio - steel - Stahl - acier - acero



Se ancora in stock saranno consegnate barre del gruppo merceologico 17.

We will deliver bars of item group 17 until stocks are sold out.

Solang im Vorrat vorhanden werden die Zahnstangen der Produkt-Gruppe 17 geliefert.

Nous livrerons les barreaux de la famille 17 jusqu'à l'épuisement du stock.

Entregaremos las barras del grupo 17 hasta el agotamiento del stock.

Barre con numero denti non a catalogo fornibili su richiesta.

Please consult us for timing bars with teeth numbers not included in the standard range.

Bei Zahnstangen mit Sonderzähnezahlen bitte nachfragen.

Veuillez nous consulter pour les barreaux dentés avec des nombres de dents hors standard.

Les rogamos consulten para las barras dentadas con números de dientes no incluidos en la gama estándar.

HTD® 5M

Passo - Pitch - Teilung - Pas - Paso 5 mm

| Codice Item number Codierung Code Código | Descrizione Designation Bezeichnung Désignation Referencia | N° denti N. of teeth Anzahl der Zähne Nombre de dents Cantidad de dientes | Dp mm | De mm | Lu mm | L mm |
|--|--|--|----------|----------|----------|---------|
| 7705M012 | 12 5M 175 AL | 12 | 19,10 | 17,96 | 175 | 190 |
| 7705M012X | 12 5M 175 ST | 12 | 19,10 | 17,96 | 175 | 190 |
| 7705M013 | 13 5M 175 AL | 13 | 20,69 | 19,55 | 175 | 190 |
| 7705M013X | 13 5M 175 ST | 13 | 20,69 | 19,55 | 175 | 190 |
| 7705M014 | 14 5M 175 AL | 14 | 22,28 | 21,14 | 175 | 190 |
| 7705M014X | 14 5M 175 ST | 14 | 22,28 | 21,14 | 175 | 190 |
| 7705M015 | 15 5M 175 AL | 15 | 23,87 | 22,73 | 175 | 190 |
| 7705M015X | 15 5M 175 ST | 15 | 23,87 | 22,73 | 175 | 190 |
| 7705M016 | 16 5M 175 AL | 16 | 25,46 | 24,32 | 175 | 190 |
| 7705M016X | 16 5M 175 ST | 16 | 25,46 | 24,32 | 175 | 190 |
| 7705M017 | 17 5M 200 AL | 17 | 27,06 | 25,92 | 200 | 210 |
| 7705M017X | 17 5M 200 ST | 17 | 27,06 | 25,92 | 200 | 210 |
| 7705M018 | 18 5M 200 AL | 18 | 28,65 | 27,51 | 200 | 210 |
| 7705M018X | 18 5M 200 ST | 18 | 28,65 | 27,51 | 200 | 210 |
| 7705M019 | 19 5M 200 AL | 19 | 30,24 | 29,10 | 200 | 210 |
| 7705M019X | 19 5M 200 ST | 19 | 30,24 | 29,10 | 200 | 210 |
| 7705M020 | 20 5M 200 AL | 20 | 31,83 | 30,69 | 200 | 210 |
| 7705M020X | 20 5M 200 ST | 20 | 31,83 | 30,69 | 200 | 210 |
| 7705M021 | 21 5M 200 AL | 21 | 33,42 | 32,28 | 200 | 210 |
| 7705M021X | 21 5M 200 ST | 21 | 33,42 | 32,28 | 200 | 210 |
| 7705M022 | 22 5M 200 AL | 22 | 35,01 | 33,87 | 200 | 210 |
| 7705M022X | 22 5M 200 ST | 22 | 35,01 | 33,87 | 200 | 210 |
| 7705M023 | 23 5M 200 AL | 23 | 36,61 | 35,47 | 200 | 210 |
| 7705M023X | 23 5M 200 ST | 23 | 36,61 | 35,47 | 200 | 210 |
| 7705M024 | 24 5M 200 AL | 24 | 38,20 | 37,06 | 200 | 210 |
| 7705M024X | 24 5M 200 ST | 24 | 38,20 | 37,06 | 200 | 210 |
| 7705M025 | 25 5M 200 AL | 25 | 39,79 | 38,65 | 200 | 210 |
| 7705M025X | 25 5M 200 ST | 25 | 39,79 | 38,65 | 200 | 210 |
| 7705M026 | 26 5M 200 AL | 26 | 41,38 | 40,24 | 200 | 210 |
| 7705M026X | 26 5M 200 ST | 26 | 41,38 | 40,24 | 200 | 210 |
| 7705M027 | 27 5M 200 AL | 27 | 42,97 | 41,83 | 200 | 210 |
| 7705M027X | 27 5M 200 ST | 27 | 42,97 | 41,83 | 200 | 210 |
| 7705M028 | 28 5M 200 AL | 28 | 44,56 | 43,42 | 200 | 210 |
| 7705M028X | 28 5M 200 ST | 28 | 44,56 | 43,42 | 200 | 210 |
| 7705M029 | 29 5M 200 AL | 29 | 46,15 | 45,01 | 200 | 200 |
| 7705M029X | 29 5M 200 ST | 29 | 46,15 | 45,01 | 200 | 200 |
| 7705M030 | 30 5M 200 AL | 30 | 47,75 | 46,60 | 200 | 200 |
| 7705M030X | 30 5M 200 ST | 30 | 47,75 | 46,60 | 200 | 200 |
| 7705M031 | 31 5M 200 AL | 31 | 49,34 | 48,20 | 200 | 200 |
| 7705M031X | 31 5M 200 ST | 31 | 49,34 | 48,20 | 200 | 200 |

| Codice Item number Codierung Code Código | Descrizione Designation Bezeichnung Désignation Referencia | N° denti N. of teeth Anzahl der Zähne Nombre de dents Cantidad de dientes | Dp mm | De mm | Lu mm | L mm |
|--|--|--|----------|----------|----------|---------|
| 7705M032 | 32 5M 200 AL | 32 | 50,93 | 49,79 | 200 | 200 |
| 7705M032X | 32 5M 200 ST | 32 | 50,93 | 49,79 | 200 | 200 |
| 7705M033 | 33 5M 200 AL | 33 | 52,52 | 51,38 | 200 | 200 |
| 7705M033X | 33 5M 200 ST | 33 | 52,52 | 51,38 | 200 | 200 |
| 7705M034 | 34 5M 200 AL | 34 | 54,11 | 52,97 | 200 | 200 |
| 7705M034X | 34 5M 200 ST | 34 | 54,11 | 52,97 | 200 | 200 |
| 7705M035 | 35 5M 200 AL | 35 | 55,70 | 54,56 | 200 | 200 |
| 7705M035X | 35 5M 200 ST | 35 | 55,70 | 54,56 | 200 | 200 |
| 7705M036 | 36 5M 200 AL | 36 | 57,30 | 56,16 | 200 | 200 |
| 7705M036X | 36 5M 200 ST | 36 | 57,30 | 56,16 | 200 | 200 |
| 7705M038 | 38 5M 200 AL | 38 | 60,48 | 59,34 | 200 | 200 |
| 7705M038X | 38 5M 200 ST | 38 | 60,48 | 59,34 | 200 | 200 |
| 7705M040 | 40 5M 200 AL | 40 | 63,66 | 62,52 | 200 | 200 |
| 7705M040X | 40 5M 200 ST | 40 | 63,66 | 62,52 | 200 | 200 |
| 7705M042 | 42 5M 200 AL | 42 | 66,85 | 65,71 | 200 | 200 |
| 7705M042X | 42 5M 200 ST | 42 | 66,85 | 65,71 | 200 | 200 |
| 7705M044 | 44 5M 200 AL | 44 | 70,03 | 68,89 | 200 | 200 |
| 7705M044X | 44 5M 200 ST | 44 | 70,03 | 68,89 | 200 | 200 |
| 7705M045 | 45 5M 200 AL | 45 | 71,62 | 70,48 | 200 | 200 |
| 7705M045X | 45 5M 200 ST | 45 | 71,62 | 70,48 | 200 | 200 |
| 7705M046 | 46 5M 200 AL | 46 | 73,21 | 72,07 | 200 | 200 |
| 7705M046X | 46 5M 200 ST | 46 | 73,21 | 72,07 | 200 | 200 |
| 7705M048 | 48 5M 200 AL | 48 | 76,39 | 75,25 | 200 | 200 |
| 7705M048X | 48 5M 200 ST | 48 | 76,39 | 75,25 | 200 | 200 |
| 7705M050 | 50 5M 200 AL | 50 | 79,58 | 78,43 | 200 | 200 |
| 7705M050X | 50 5M 200 ST | 50 | 79,58 | 78,43 | 200 | 200 |
| 7705M054 | 54 5M 200 AL | 54 | 85,94 | 84,80 | 200 | 200 |
| 7705M054X | 54 5M 200 ST | 54 | 85,94 | 84,80 | 200 | 200 |
| 7705M058 | 58 5M 200 AL | 58 | 92,31 | 91,17 | 200 | 200 |
| 7705M058X | 58 5M 200 ST | 58 | 92,31 | 91,17 | 200 | 200 |
| 7705M060 | 60 5M 200 AL | 60 | 95,49 | 94,35 | 200 | 200 |
| 7705M060X | 60 5M 200 ST | 60 | 95,49 | 94,35 | 200 | 200 |
| 7705M062 | 62 5M 200 AL | 62 | 98,68 | 97,54 | 200 | 200 |
| 7705M062X | 62 5M 200 ST | 62 | 98,68 | 97,54 | 200 | 200 |
| 7705M072 | 72 5M 200 AL | 72 | 114,59 | 113,45 | 200 | 200 |
| 7705M072X | 72 5M 200 ST | 72 | 114,59 | 113,45 | 200 | 200 |
| 7705M075 | 75 5M 200 AL | 75 | 119,37 | 118,23 | 200 | 200 |
| 7705M075X | 75 5M 200 ST | 75 | 119,37 | 118,23 | 200 | 200 |
| 7705M080 | 80 5M 200 AL | 80 | 127,32 | 126,18 | 200 | 200 |
| 7705M080X | 80 5M 200 ST | 80 | 127,32 | 126,18 | 200 | 200 |



Barre dentate HTD®

HTD® timing bars

HTD® Zahnstangen

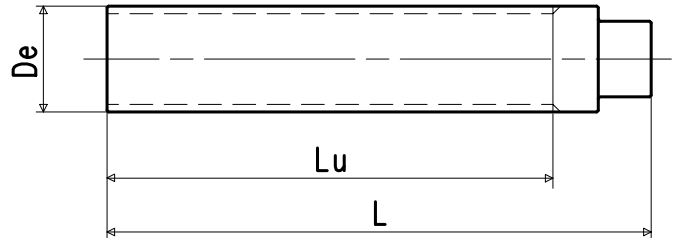
Barreaux dentés HTD®

Barras dentadas HTD®

Tipo di materiale - Type of material - Werkstoff - Type de matière - Tipo de material:

AL = alluminio idoneo al trattamento anodico.
aluminium suitable for the anodic oxidation.
Aluminium für die anodische Oxidation geeignet.
aluminium apte au traitement anodique.
aluminio apto para la oxidación anódica.

ST = acciaio - steel - Stahl - acier - acero



Se ancora in stock saranno consegnate barre del gruppo merceologico 17.

We will deliver bars of item group 17 until stocks are sold out.

Solang im Vorrat vorhanden werden die Zahnstangen der Produkt-Gruppe 17 geliefert.

Nous livrerons les barreaux de la famille 17 jusqu'à l'épuisement du stock.

Entregaremos las barras del grupo 17 hasta el agotamiento del stock.

Barre con numero denti non a catalogo fornibili su richiesta.

Please consult us for timing bars with teeth numbers not included in the standard range.

Bei Zahnstangen mit Sonderzähnezahlen bitte nachfragen.

Veuillez nous consulter pour les barreaux dentés avec des nombres de dents hors standard.

Les rogamos consulten para las barras dentadas con números de dientes no incluidos en la gama estándar.

HTD® 8M

Passo - Pitch - Teilung - Pas - Paso 8 mm

| Codice Item number Codierung Code Código | Descrizione Designation Bezeichnung Désignation Referencia | N° denti N. of teeth Anzahl der Zähne Nombre de dents Cantidad de dientes | Dp mm | De mm | Lu mm | L mm |
|--|--|--|----------|----------|----------|---------|
| 7708M018 | 18 8M 200 AL | 18 | 45,84 | 44,46 | 200 | 200 |
| 7708M018X | 18 8M 200 ST | 18 | 45,84 | 44,46 | 200 | 200 |
| 7708M019 | 19 8M 200 AL | 19 | 48,38 | 47,01 | 200 | 200 |
| 7708M019X | 19 8M 200 ST | 19 | 48,38 | 47,01 | 200 | 200 |
| 7708M020 | 20 8M 200 AL | 20 | 50,93 | 49,56 | 200 | 200 |
| 7708M020X | 20 8M 200 ST | 20 | 50,93 | 49,56 | 200 | 200 |
| 7708M021 | 21 8M 200 AL | 21 | 53,48 | 52,10 | 200 | 200 |
| 7708M021X | 21 8M 200 ST | 21 | 53,48 | 52,10 | 200 | 200 |
| 7708M022 | 22 8M 200 AL | 22 | 56,02 | 54,65 | 200 | 200 |
| 7708M022X | 22 8M 200 ST | 22 | 56,02 | 54,65 | 200 | 200 |
| 7708M023 | 23 8M 200 AL | 23 | 58,57 | 57,20 | 200 | 200 |
| 7708M023X | 23 8M 200 ST | 23 | 58,57 | 57,20 | 200 | 200 |
| 7708M024 | 24 8M 200 AL | 24 | 61,12 | 59,75 | 200 | 200 |
| 7708M024X | 24 8M 200 ST | 24 | 61,12 | 59,75 | 200 | 200 |
| 7708M025 | 25 8M 200 AL | 25 | 63,66 | 62,29 | 200 | 200 |
| 7708M025X | 25 8M 200 ST | 25 | 63,66 | 62,29 | 200 | 200 |
| 7708M026 | 26 8M 200 AL | 26 | 66,21 | 64,84 | 200 | 200 |
| 7708M026X | 26 8M 200 ST | 26 | 66,21 | 64,84 | 200 | 200 |
| 7708M027 | 27 8M 200 AL | 27 | 68,75 | 67,38 | 200 | 200 |
| 7708M027X | 27 8M 200 ST | 27 | 68,75 | 67,38 | 200 | 200 |
| 7708M028 | 28 8M 200 AL | 28 | 71,30 | 70,08 | 200 | 200 |
| 7708M028X | 28 8M 200 ST | 28 | 71,30 | 70,08 | 200 | 200 |
| 7708M029 | 29 8M 200 AL | 29 | 73,85 | 72,62 | 200 | 200 |
| 7708M029X | 29 8M 200 ST | 29 | 73,85 | 72,62 | 200 | 200 |
| 7708M030 | 30 8M 200 AL | 30 | 76,39 | 75,13 | 200 | 200 |
| 7708M030X | 30 8M 200 ST | 30 | 76,39 | 75,13 | 200 | 200 |
| 7708M032 | 32 8M 200 AL | 32 | 81,49 | 80,16 | 200 | 200 |
| 7708M032X | 32 8M 200 ST | 32 | 81,49 | 80,16 | 200 | 200 |
| 7708M034 | 34 8M 200 AL | 34 | 86,58 | 85,22 | 200 | 200 |
| 7708M034X | 34 8M 200 ST | 34 | 86,58 | 85,22 | 200 | 200 |
| 7708M035 | 35 8M 200 AL | 35 | 89,13 | 87,76 | 200 | 200 |
| 7708M035X | 35 8M 200 ST | 35 | 89,13 | 87,76 | 200 | 200 |

| Codice Item number Codierung Code Código | Descrizione Designation Bezeichnung Désignation Referencia | N° denti N. of teeth Anzahl der Zähne Nombre de dents Cantidad de dientes | Dp mm | De mm | Lu mm | L mm |
|--|--|--|----------|----------|----------|---------|
| 7708M036 | 36 8M 200 AL | 36 | 91,67 | 90,30 | 200 | 200 |
| 7708M036X | 36 8M 200 ST | 36 | 91,67 | 90,30 | 200 | 200 |
| 7708M038 | 38 8M 200 AL | 38 | 96,77 | 95,39 | 200 | 200 |
| 7708M038X | 38 8M 200 ST | 38 | 96,77 | 95,39 | 200 | 200 |
| 7708M040 | 40 8M 200 AL | 40 | 101,86 | 100,49 | 200 | 200 |
| 7708M040X | 40 8M 200 ST | 40 | 101,86 | 100,49 | 200 | 200 |
| 7708M042 | 42 8M 200 AL | 42 | 106,95 | 105,58 | 200 | 200 |
| 7708M042X | 42 8M 200 ST | 42 | 106,95 | 105,58 | 200 | 200 |
| 7708M044 | 44 8M 200 AL | 44 | 112,05 | 110,67 | 200 | 200 |
| 7708M044X | 44 8M 200 ST | 44 | 112,05 | 110,67 | 200 | 200 |
| 7708M045 | 45 8M 200 AL | 45 | 114,59 | 113,22 | 200 | 200 |
| 7708M045X | 45 8M 200 ST | 45 | 114,59 | 113,22 | 200 | 200 |
| 7708M048 | 48 8M 200 AL | 48 | 122,23 | 120,86 | 200 | 200 |
| 7708M048X | 48 8M 200 ST | 48 | 122,23 | 120,86 | 200 | 200 |
| 7708M050 | 50 8M 200 AL | 50 | 127,32 | 125,95 | 200 | 200 |
| 7708M050X | 50 8M 200 ST | 50 | 127,32 | 125,95 | 200 | 200 |
| 7708M056 | 56 8M 200 AL | 56 | 142,60 | 141,23 | 200 | 200 |
| 7708M056X | 56 8M 200 ST | 56 | 142,60 | 141,23 | 200 | 200 |
| 7708M060 | 60 8M 200 AL | 60 | 152,79 | 151,42 | 200 | 200 |
| 7708M060X | 60 8M 200 ST | 60 | 152,79 | 151,42 | 200 | 200 |
| 7708M064 | 64 8M 200 AL | 64 | 162,97 | 161,60 | 200 | 200 |
| 7708M064X | 64 8M 200 ST | 64 | 162,97 | 161,60 | 200 | 200 |
| 7708M070 | 70 8M 200 AL | 70 | 178,25 | 176,88 | 200 | 200 |
| 7708M070X | 70 8M 200 ST | 70 | 178,25 | 176,88 | 200 | 200 |
| 7708M072 | 72 8M 200 AL | 72 | 183,35 | 181,97 | 200 | 200 |
| 7708M072X | 72 8M 200 ST | 72 | 183,35 | 181,97 | 200 | 200 |
| 7708M075 | 75 8M 200 AL | 75 | 190,99 | 189,61 | 200 | 200 |
| 7708M075X | 75 8M 200 ST | 75 | 190,99 | 189,61 | 200 | 200 |



Barre dentate GT®

GT® timing bars

GT® Zahnstangen

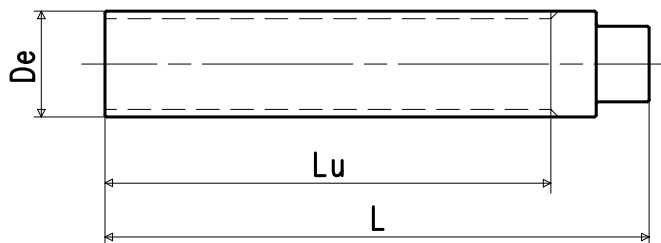
Barreaux dentés GT®

Barras dentadas GT®

Tipo di materiale - Type of material - Werkstoff - Type de matière - Tipo de material:

AL = alluminio idoneo al trattamento anodico.
aluminium suitable for the anodic oxidation.
Aluminium für die anodische Oxidation geeignet.
aluminium apte au traitement anodique.
aluminio apto para la oxidación anódica.

ST = acciaio - steel - Stahl - acier - acero



Se ancora in stock saranno consegnate barre del gruppo merceologico 17.

We will deliver bars of item group 17 until stocks are sold out.

Solang im Vorrat vorhanden werden die Zahnstangen der Produkt-Gruppe 17 geliefert.

Nous livrerons les barreaux de la famille 17 jusqu'à l'épuisement du stock.

Entregaremos las barras del grupo 17 hasta el agotamiento del stock.

Le barre GT®3MR sono a scorta solo in alluminio idoneo al trattamento anodico.

Stock GT®3MR timing bars are only made of aluminium suitable for the anodic oxidation.

Die GT® 3MR Zahnstangen werden nur aus Aluminium hergestellt und sind für die anodische Oxidation geeignet.

Les barreaux GT® 3MR ne sont fabriqués qu'en aluminium apte au traitement anodique.

Las barras GT® 3MR sólo se fabrican de aluminio apto para la oxidación anódica.

Barre con numero denti non a catalogo fornibili su richiesta.

Please consult us for timing bars with teeth numbers not included in the standard range.

Bei Zahnstangen mit Sonderzähnezahlen bitte nachfragen.

Veuillez nous consulter pour les barreaux dentés avec des nombres de dents hors standard.

Les rogamos consulten para las barras dentadas con números de dientes no incluidos en la gama estándar.

GT® 3MR

Passo - Pitch - Teilung - Pas - Paso 3 mm

| Codice Item number Codierung Code Código | Descrizione Designation Bezeichnung Désignation Referencia | N° denti N. of teeth Anzahl der Zähne Nombre de dents Cantidad de dientes | Dp | De | Lu | L |
|--|--|--|-------|-------|-----|-----|
| | | | mm | mm | mm | mm |
| 7703G009 | 09 3MR 80 AL | 9 | 8,59 | 7,83 | 80 | 100 |
| 7703G010 | 10 3MR 80 AL | 10 | 9,55 | 8,79 | 80 | 100 |
| 7703G011 | 11 3MR 80 AL | 11 | 10,50 | 9,74 | 80 | 100 |
| 7703G012 | 12 3MR 125 AL | 12 | 11,46 | 10,70 | 125 | 145 |
| 7703G013 | 13 3MR 125 AL | 13 | 12,41 | 11,65 | 125 | 145 |
| 7703G014 | 14 3MR 125 AL | 14 | 13,37 | 12,61 | 125 | 145 |
| 7703G015 | 15 3MR 125 AL | 15 | 14,32 | 13,56 | 125 | 145 |
| 7703G016 | 16 3MR 125 AL | 16 | 15,28 | 14,52 | 125 | 145 |
| 7703G017 | 17 3MR 125 AL | 17 | 16,23 | 15,47 | 125 | 145 |
| 7703G018 | 18 3MR 125 AL | 18 | 17,19 | 16,43 | 125 | 145 |
| 7703G019 | 19 3MR 125 AL | 19 | 18,14 | 17,38 | 125 | 145 |
| 7703G020 | 20 3MR 175 AL | 20 | 19,10 | 18,34 | 175 | 190 |
| 7703G021 | 21 3MR 175 AL | 21 | 20,05 | 19,29 | 175 | 190 |
| 7703G022 | 22 3MR 175 AL | 22 | 21,01 | 20,25 | 175 | 190 |
| 7703G023 | 23 3MR 175 AL | 23 | 21,96 | 21,20 | 175 | 190 |
| 7703G024 | 24 3MR 175 AL | 24 | 22,92 | 22,16 | 175 | 190 |
| 7703G025 | 25 3MR 175 AL | 25 | 23,87 | 23,11 | 175 | 190 |
| 7703G026 | 26 3MR 175 AL | 26 | 24,83 | 24,07 | 175 | 190 |
| 7703G027 | 27 3MR 200 AL | 27 | 25,78 | 25,02 | 200 | 210 |
| 7703G028 | 28 3MR 200 AL | 28 | 26,74 | 25,98 | 200 | 210 |
| 7703G029 | 29 3MR 200 AL | 29 | 27,69 | 26,93 | 200 | 210 |
| 7703G030 | 30 3MR 200 AL | 30 | 28,65 | 27,89 | 200 | 210 |
| 7703G031 | 31 3MR 200 AL | 31 | 29,60 | 28,84 | 200 | 210 |
| 7703G032 | 32 3MR 200 AL | 32 | 30,56 | 29,80 | 200 | 210 |
| 7703G033 | 33 3MR 200 AL | 33 | 31,51 | 30,75 | 200 | 210 |
| 7703G034 | 34 3MR 200 AL | 34 | 32,47 | 31,71 | 200 | 210 |
| 7703G035 | 35 3MR 200 AL | 35 | 33,42 | 32,66 | 200 | 210 |
| 7703G036 | 36 3MR 200 AL | 36 | 34,38 | 33,62 | 200 | 210 |
| 7703G037 | 37 3MR 200 AL | 37 | 35,33 | 34,57 | 200 | 210 |
| 7703G038 | 38 3MR 200 AL | 38 | 36,29 | 35,53 | 200 | 210 |
| 7703G039 | 39 3MR 200 AL | 39 | 37,24 | 36,48 | 200 | 210 |
| 7703G040 | 40 3MR 200 AL | 40 | 38,20 | 37,44 | 200 | 210 |
| 7703G042 | 42 3MR 200 AL | 42 | 40,11 | 39,35 | 200 | 210 |

| Codice Item number Codierung Code Código | Descrizione Designation Bezeichnung Désignation Referencia | N° denti N. of teeth Anzahl der Zähne Nombre de dents Cantidad de dientes | Dp | De | Lu | L |
|--|--|--|-------|-------|-----|-----|
| | | | mm | mm | mm | mm |
| 7703G044 | 44 3MR 200 AL | 44 | 42,02 | 41,26 | 200 | 210 |
| 7703G045 | 45 3MR 200 AL | 45 | 42,97 | 42,21 | 200 | 210 |
| 7703G048 | 48 3MR 200 AL | 48 | 45,84 | 45,08 | 200 | 200 |
| 7703G050 | 50 3MR 200 AL | 50 | 47,75 | 46,99 | 200 | 200 |
| 7703G052 | 52 3MR 200 AL | 52 | 49,66 | 48,90 | 200 | 200 |
| 7703G054 | 54 3MR 200 AL | 54 | 51,57 | 50,81 | 200 | 200 |
| 7703G056 | 56 3MR 200 AL | 56 | 53,48 | 52,72 | 200 | 200 |
| 7703G060 | 60 3MR 200 AL | 60 | 57,30 | 56,54 | 200 | 200 |
| 7703G062 | 62 3MR 200 AL | 62 | 59,21 | 58,45 | 200 | 200 |
| 7703G064 | 64 3MR 200 AL | 64 | 61,12 | 60,36 | 200 | 200 |
| 7703G066 | 66 3MR 200 AL | 66 | 63,03 | 62,27 | 200 | 200 |
| 7703G068 | 68 3MR 200 AL | 68 | 64,94 | 64,18 | 200 | 200 |
| 7703G070 | 70 3MR 200 AL | 70 | 66,85 | 66,09 | 200 | 200 |
| 7703G072 | 72 3MR 200 AL | 72 | 68,75 | 67,99 | 200 | 200 |



Barre dentate GT®

GT® timing bars

GT® Zahnstangen

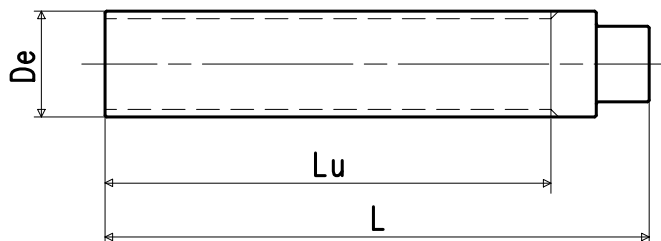
Barreaux dentés GT®

Barras dentadas GT®

Tipo di materiale - Type of material - Werkstoff - Type de matière - Tipo de material:

AL = alluminio idoneo al trattamento anodico.
aluminium suitable for the anodic oxidation.
Aluminium für die anodische Oxidation geeignet.
aluminium apte au traitement anodique.
aluminio apto para la oxidación anódica.

ST = acciaio - steel - Stahl - acier - acero



Se ancora in stock saranno consegnate barre del gruppo merceologico 17.

We will deliver bars of item group 17 until stocks are sold out.

Solang im Vorrat vorhanden werden die Zahnstangen der Produkt-Gruppe 17 geliefert.

Nous livrerons les barreaux de la famille 17 jusqu'à l'épuisement du stock.

Entregaremos las barras del grupo 17 hasta el agotamiento del stock.

Barre con numero denti non a catalogo fornibili su richiesta.

Please consult us for timing bars with teeth numbers not included in the standard range.

Bei Zahnstangen mit Sonderzähnezahlen bitte nachfragen.

Veuillez nous consulter pour les barreaux dentés avec des nombres de dents hors standard.

Les rogamos consulten para las barras dentadas con números de dientes no incluidos en la gama estándar.

GT® 5MR

Passo - Pitch - Teilung - Pas - Paso 5 mm

| Codice Item number Codierung Code Código | Descrizione Designation Bezeichnung Désignation Referencia | N° denti N. of teeth Anzahl der Zähne Nombre de dents Cantidad de dientes | Dp | De | Lu | L |
|--|--|--|-------|-------|-----|-----|
| | | | mm | mm | mm | mm |
| 7705G012 | 12 5MR 175 AL | 12 | 19,10 | 17,96 | 175 | 190 |
| 7705G012X | 12 5MR 175 ST | 12 | 19,10 | 17,96 | 175 | 190 |
| 7705G013 | 13 5MR 175 AL | 13 | 20,69 | 19,55 | 175 | 190 |
| 7705G013X | 13 5MR 175 ST | 13 | 20,69 | 19,55 | 175 | 190 |
| 7705G014 | 14 5MR 175 AL | 14 | 22,28 | 21,14 | 175 | 190 |
| 7705G014X | 14 5MR 175 ST | 14 | 22,28 | 21,14 | 175 | 190 |
| 7705G015 | 15 5MR 175 AL | 15 | 23,87 | 22,73 | 175 | 190 |
| 7705G015X | 15 5MR 175 ST | 15 | 23,87 | 22,73 | 175 | 190 |
| 7705G016 | 16 5MR 175 AL | 16 | 25,46 | 24,32 | 175 | 190 |
| 7705G016X | 16 5MR 175 ST | 16 | 25,46 | 24,32 | 175 | 190 |
| 7705G017 | 17 5MR 200 AL | 17 | 27,06 | 25,92 | 200 | 210 |
| 7705G017X | 17 5MR 200 ST | 17 | 27,06 | 25,92 | 200 | 210 |
| 7705G018 | 18 5MR 200 AL | 18 | 28,65 | 27,51 | 200 | 210 |
| 7705G018X | 18 5MR 200 ST | 18 | 28,65 | 27,51 | 200 | 210 |
| 7705G019 | 19 5MR 200 AL | 19 | 30,24 | 29,10 | 200 | 210 |
| 7705G019X | 19 5MR 200 ST | 19 | 30,24 | 29,10 | 200 | 210 |
| 7705G020 | 20 5MR 200 AL | 20 | 31,83 | 30,69 | 200 | 210 |
| 7705G020X | 20 5MR 200 ST | 20 | 31,83 | 30,69 | 200 | 210 |
| 7705G021 | 21 5MR 200 AL | 21 | 33,42 | 32,28 | 200 | 210 |
| 7705G021X | 21 5MR 200 ST | 21 | 33,42 | 32,28 | 200 | 210 |
| 7705G022 | 22 5MR 200 AL | 22 | 35,01 | 33,87 | 200 | 210 |
| 7705G022X | 22 5MR 200 ST | 22 | 35,01 | 33,87 | 200 | 210 |
| 7705G023 | 23 5MR 200 AL | 23 | 36,61 | 35,47 | 200 | 210 |
| 7705G023X | 23 5MR 200 ST | 23 | 36,61 | 35,47 | 200 | 210 |
| 7705G024 | 24 5MR 200 AL | 24 | 38,20 | 37,06 | 200 | 210 |
| 7705G024X | 24 5MR 200 ST | 24 | 38,20 | 37,06 | 200 | 210 |
| 7705G025 | 25 5MR 200 AL | 25 | 39,79 | 38,65 | 200 | 210 |
| 7705G025X | 25 5MR 200 ST | 25 | 39,79 | 38,65 | 200 | 210 |
| 7705G026 | 26 5MR 200 AL | 26 | 41,38 | 40,24 | 200 | 210 |
| 7705G026X | 26 5MR 200 ST | 26 | 41,38 | 40,24 | 200 | 210 |
| 7705G027 | 27 5MR 200 AL | 27 | 42,97 | 41,83 | 200 | 210 |
| 7705G027X | 27 5MR 200 ST | 27 | 42,97 | 41,83 | 200 | 210 |
| 7705G028 | 28 5MR 200 AL | 28 | 44,56 | 43,42 | 200 | 210 |
| 7705G028X | 28 5MR 200 ST | 28 | 44,56 | 43,42 | 200 | 210 |
| 7705G029 | 29 5MR 200 AL | 29 | 46,15 | 45,01 | 200 | 200 |
| 7705G029X | 29 5MR 200 ST | 29 | 46,15 | 45,01 | 200 | 200 |
| 7705G030 | 30 5MR 200 AL | 30 | 47,75 | 46,60 | 200 | 200 |
| 7705G030X | 30 5MR 200 ST | 30 | 47,75 | 46,60 | 200 | 200 |
| 7705G031 | 31 5MR 200 AL | 31 | 49,34 | 48,20 | 200 | 200 |
| 7705G031X | 31 5MR 200 ST | 31 | 49,34 | 48,20 | 200 | 200 |
| 7705G032 | 32 5MR 200 AL | 32 | 50,93 | 49,79 | 200 | 200 |

| Codice Item number Codierung Code Código | Descrizione Designation Bezeichnung Désignation Referencia | N° denti N. of teeth Anzahl der Zähne Nombre de dents Cantidad de dientes | Dp | De | Lu | L |
|--|--|--|--------|--------|-----|-----|
| | | | mm | mm | mm | mm |
| 7705G032X | 32 5MR 200 ST | 32 | 50,93 | 49,79 | 200 | 200 |
| 7705G033 | 33 5MR 200 AL | 33 | 52,52 | 51,38 | 200 | 200 |
| 7705G033X | 33 5MR 200 ST | 33 | 52,52 | 51,38 | 200 | 200 |
| 7705G034 | 34 5MR 200 AL | 34 | 54,11 | 52,97 | 200 | 200 |
| 7705G034X | 34 5MR 200 ST | 34 | 54,11 | 52,97 | 200 | 200 |
| 7705G035 | 35 5MR 200 AL | 35 | 55,70 | 54,56 | 200 | 200 |
| 7705G035X | 35 5MR 200 ST | 35 | 55,70 | 54,56 | 200 | 200 |
| 7705G036 | 36 5MR 200 AL | 36 | 57,30 | 56,16 | 200 | 200 |
| 7705G036X | 36 5MR 200 ST | 36 | 57,30 | 56,16 | 200 | 200 |
| 7705G038 | 38 5MR 200 AL | 38 | 60,48 | 59,34 | 200 | 200 |
| 7705G038X | 38 5MR 200 ST | 38 | 60,48 | 59,34 | 200 | 200 |
| 7705G040 | 40 5MR 200 AL | 40 | 63,66 | 62,52 | 200 | 200 |
| 7705G040X | 40 5MR 200 ST | 40 | 63,66 | 62,52 | 200 | 200 |
| 7705G041 | 41 5MR 200 AL | 41 | 65,25 | 64,11 | 200 | 200 |
| 7705G041X | 41 5MR 200 ST | 41 | 65,25 | 64,11 | 200 | 200 |
| 7705G042 | 42 5MR 200 AL | 42 | 66,85 | 65,71 | 200 | 200 |
| 7705G042X | 42 5MR 200 ST | 42 | 66,85 | 65,71 | 200 | 200 |
| 7705G044 | 44 5MR 200 AL | 44 | 70,03 | 68,89 | 200 | 200 |
| 7705G044X | 44 5MR 200 ST | 44 | 70,03 | 68,89 | 200 | 200 |
| 7705G045 | 45 5MR 200 AL | 45 | 71,62 | 70,48 | 200 | 200 |
| 7705G045X | 45 5MR 200 ST | 45 | 71,62 | 70,48 | 200 | 200 |
| 7705G046 | 46 5MR 200 AL | 46 | 73,21 | 72,07 | 200 | 200 |
| 7705G046X | 46 5MR 200 ST | 46 | 73,21 | 72,07 | 200 | 200 |
| 7705G048 | 48 5MR 200 AL | 48 | 76,39 | 75,25 | 200 | 200 |
| 7705G048X | 48 5MR 200 ST | 48 | 76,39 | 75,25 | 200 | 200 |
| 7705G050 | 50 5MR 200 AL | 50 | 79,58 | 78,43 | 200 | 200 |
| 7705G050X | 50 5MR 200 ST | 50 | 79,58 | 78,43 | 200 | 200 |
| 7705G054 | 54 5MR 200 AL | 54 | 85,94 | 84,80 | 200 | 200 |
| 7705G054X | 54 5MR 200 ST | 54 | 85,94 | 84,80 | 200 | 200 |
| 7705G060 | 60 5MR 200 AL | 60 | 95,49 | 94,35 | 200 | 200 |
| 7705G060X | 60 5MR 200 ST | 60 | 95,49 | 94,35 | 200 | 200 |
| 7705G062 | 62 5MR 200 AL | 62 | 98,68 | 97,54 | 200 | 200 |
| 7705G062X | 62 5MR 200 ST | 62 | 98,68 | 97,54 | 200 | 200 |
| 7705G072 | 72 5MR 200 AL | 72 | 114,59 | 113,45 | 200 | 200 |
| 7705G072X | 72 5MR 200 ST | 72 | 114,59 | 113,45 | 200 | 200 |
| 7705G075 | 75 5MR 200 AL | 75 | 119,37 | 118,23 | 200 | 200 |
| 7705G075X | 75 5MR 200 ST | 75 | 119,37 | 118,23 | 200 | 200 |
| 7705G080 | 80 5MR 200 AL | 80 | 127,32 | 126,18 | 200 | 200 |
| 7705G080X | 80 5MR 200 ST | 80 | 127,32 | 126,18 | 200 | 200 |
| 7705G088 | 88 5MR 200 AL | 88 | 140,06 | 138,92 | 200 | 200 |
| 7705G088X | 88 5MR 200 ST | 88 | 140,06 | 138,92 | 200 | 200 |



Barre dentate POLY CHAIN® GT

POLY CHAIN® GT timing bars

POLY CHAIN® GT Zahnstangen

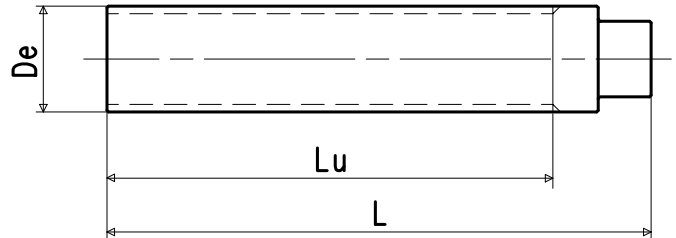
Barreaux dentés POLY CHAIN® GT

Barras dentadas POLY CHAIN® GT

Tipo di materiale - Type of material - Werkstoff - Type de matière - Tipo de material:

AL = alluminio idoneo al trattamento anodico.
aluminium suitable for the anodic oxidation.
Aluminium für die anodische Oxidation geeignet.
aluminium apte au traitement anodique.
aluminio apto para la oxidación anódica.

ST = acciaio - steel - Stahl - acier - acero



Se ancora in stock saranno consegnate barre del gruppo merceologico 17.

We will deliver bars of item group 17 until stocks are sold out.

Solang im Vorrat vorhanden werden die Zahnstangen der Produkt-Gruppe 17 geliefert.

Nous livrerons les barreaux de la famille 17 jusqu'à l'épuisement du stock.

Entregaremos las barras del grupo 17 hasta el agotamiento del stock.

Barre con numero denti non a catalogo fornibili su richiesta.

Please consult us for timing bars with teeth numbers not included in the standard range.

Bei Zahnstangen mit Sonderzähnezahlen bitte nachfragen.

Veuillez nous consulter pour les barreaux dentés avec des nombres de dents hors standard.

Les rogamos consulten para las barras dentadas con números de dientes no incluidos en la gama estándar.

Siamo in grado di fornire barre POLY CHAIN® GT 8M con numero di denti superiore alla gamma standard presentata e barre passo GT 14M. Richiedere offerta e termini di consegna al NS/UFF. COMMERCIALE.

POLY CHAIN® GT 8M bars with a greater number of teeth and GT 14M pitch bars can be supplied on request. Please consult us.

Wir liefern POLY CHAIN® GT 8M Zahnstangen mit besonderen Zahnzahlen und Teilung GT 14M. Bitte nachfragen.

Nous pouvons livrer les barreaux POLY CHAIN® GT 8M avec un nombre de dents supérieur et les barreaux pas GT 14M. Veuillez nous consulter.

Podemos entregar las barras POLY CHAIN® GT 8M con un número de dientes superior y las barras paso GT 14M. Rogamos consulten.

PCGT 8M

Passo - Pitch - Teilung - Pas - Paso 8 mm

| Codice Item number Codierung Code Código | Descrizione Designation Bezeichnung Désignation Referencia | N° denti N. of teeth Anzahl der Zähne Nombre de dents Cantidad de dientes | Dp | De | Lu | L |
|--|--|--|--------|--------|-----|-----|
| | | | mm | mm | mm | mm |
| 77PCM022X | 22 PCGT 8M 200 ST | 22 | 56,02 | 54,42 | 200 | 200 |
| 77PCM023X | 23 PCGT 8M 200 ST | 23 | 58,57 | 56,97 | 200 | 200 |
| 77PCM024X | 24 PCGT 8M 200 ST | 24 | 61,12 | 59,52 | 200 | 200 |
| 77PCM025X | 25 PCGT 8M 200 ST | 25 | 63,66 | 62,06 | 200 | 200 |
| 77PCM026X | 26 PCGT 8M 200 ST | 26 | 66,21 | 64,61 | 200 | 200 |
| 77PCM027X | 27 PCGT 8M 200 ST | 27 | 68,75 | 67,15 | 200 | 200 |
| 77PCM028X | 28 PCGT 8M 200 ST | 28 | 71,30 | 69,70 | 200 | 200 |
| 77PCM029X | 29 PCGT 8M 200 ST | 29 | 73,85 | 72,25 | 200 | 200 |
| 77PCM030X | 30 PCGT 8M 200 ST | 30 | 76,39 | 74,79 | 200 | 200 |
| 77PCM031X | 31 PCGT 8M 200 ST | 31 | 78,94 | 77,34 | 200 | 200 |
| 77PCM032X | 32 PCGT 8M 200 ST | 32 | 81,49 | 79,89 | 200 | 200 |
| 77PCM033X | 33 PCGT 8M 200 ST | 33 | 84,03 | 82,43 | 200 | 200 |
| 77PCM034X | 34 PCGT 8M 200 ST | 34 | 86,58 | 84,98 | 200 | 200 |
| 77PCM035X | 35 PCGT 8M 200 ST | 35 | 89,13 | 87,53 | 200 | 200 |
| 77PCM036X | 36 PCGT 8M 200 ST | 36 | 91,67 | 90,07 | 200 | 200 |
| 77PCM037X | 37 PCGT 8M 200 ST | 37 | 94,22 | 92,62 | 200 | 200 |
| 77PCM038X | 38 PCGT 8M 200 ST | 38 | 96,77 | 95,17 | 200 | 200 |
| 77PCM039X | 39 PCGT 8M 200 ST | 39 | 99,31 | 97,71 | 200 | 200 |
| 77PCM040X | 40 PCGT 8M 200 ST | 40 | 101,86 | 100,26 | 200 | 200 |
| 77PCM042X | 42 PCGT 8M 200 ST | 42 | 106,95 | 105,35 | 200 | 200 |
| 77PCM044X | 44 PCGT 8M 200 ST | 44 | 112,05 | 110,45 | 200 | 200 |
| 77PCM045X | 45 PCGT 8M 200 ST | 45 | 114,59 | 112,99 | 200 | 200 |
| 77PCM048X | 48 PCGT 8M 200 ST | 48 | 122,23 | 120,63 | 200 | 200 |
| 77PCM050X | 50 PCGT 8M 200 ST | 50 | 127,32 | 125,72 | 200 | 200 |
| 77PCM056X | 56 PCGT 8M 200 ST | 56 | 142,60 | 141,00 | 200 | 200 |
| 77PCM060X | 60 PCGT 8M 200 ST | 60 | 152,79 | 151,19 | 200 | 200 |
| 77PCM064X | 64 PCGT 8M 200 ST | 64 | 162,97 | 161,37 | 200 | 200 |
| 77PCM070X | 70 PCGT 8M 200 ST | 70 | 178,25 | 176,65 | 200 | 200 |
| 77PCM072X | 72 PCGT 8M 200 ST | 72 | 183,35 | 181,75 | 200 | 200 |
| 77PCM075X | 75 PCGT 8M 200 ST | 75 | 190,99 | 189,39 | 200 | 200 |
| 77PCM078X | 78 PCGT 8M 200 ST | 78 | 198,63 | 197,03 | 200 | 200 |



Barre dentate RPP

RPP timing bars

RPP Zahnstangen

Barreaux dentés RPP

Barras dentadas RPP

| Novità | New | Neu | Nouveauté | Novedad |
|--|---|---|--|---|
| <p>Le caratteristiche delle nuove barre (Gr. 77), rispetto alle precedenti (Gr. 17), sono le seguenti:</p> <ul style="list-style-type: none"> - Aumento della gamma; - Aumento della lunghezza utile dentata Lu; - La possibilità di scelta del materiale, per alcuni passi, fra acciaio e alluminio. <p>Se ancora in stock saranno consegnate barre del gruppo merceologico 17.</p> <p>Le barre RPP3 sono a scorta solo in alluminio idoneo al trattamento anodico.</p> <p>Barre con numero denti non a catalogo fornibili su richiesta.</p> | <p>The main features of new bars (Item group 77) with regard to previous ones (item group 17) are:</p> <ul style="list-style-type: none"> - Range extension; - Enlargement of useful length Lu; - Possibility of choosing the material (steel or aluminium) in some bar pitches. <p>We will deliver bars of item group 17 until stocks are sold out.</p> <p>Stock RPP3 timing bars are only made of aluminium suitable for the anodic oxidation.</p> <p>Please consult us for timing bars with teeth numbers not included in the standard range.</p> | <p>Die Hauptmerkmale der neuen Zahnstangen (Produkt-Gruppe 77) im Vergleich zu den alten (Produkt-Gruppe 17) sind:</p> <ul style="list-style-type: none"> - Erweiterung des Bereiches; - Verlängerung der Nutzlänge Lu; - Für einige Teilungen kann das Material (Stahl oder Aluminium) ausgewählt werden. <p>Solang im Vorrat vorhanden werden die Zahnstangen der Produkt-Gruppe 17 geliefert.</p> <p>Die RPP 3 Zahnstangen werden nur aus Aluminium hergestellt und sind für die anodische Oxidation geeignet.</p> <p>Bei Zahnstangen mit Sonderzähnezahlen bitte nachfragen.</p> | <p>Les caractéristiques des nouveaux barreaux (code famille 77) par rapport aux précédents (code famille 17) sont les suivantes:</p> <ul style="list-style-type: none"> - Enrichissement de la gamme; - Allongement de la longueur dentée utile Lu; - Possibilité de choisir la matière (acier ou aluminium) pour quelques pas. <p>Nous livrerons les barreaux de la famille 17 jusqu'à l'épuisement du stock.</p> <p>Les barreaux RPP 3 ne sont fabriqués qu'en aluminium apte au traitement anodique.</p> <p>Veillez nous consulter pour les barreaux dentés avec des nombres de dents hors standard.</p> | <p>Las características de las nuevas barras (grupo producto 77) con respecto de las precedentes (grupo producto 17) son las siguientes:</p> <ul style="list-style-type: none"> - Ampliación de la gama; - Alargamiento de la longitud dentada útil Lu; - Posibilidad de elegir el material (acero o aluminio) para unos pasos. <p>Entregaremos las barras del grupo 17 hasta el agotamiento del stock.</p> <p>Las barras RPP 3 sólo se fabrican de aluminio apto para la oxidación anódica.</p> <p>Les rogamos consulten para las barras dentadas con números de dientes no incluidos en la gama estándar.</p> |

RPP 3

Passo - Pitch - Teilung - Pas - Paso 3 mm

| Codice Item number Codierung Code Código | Descrizione Designation Bezeichnung Désignation Referencia | N° denti N. of teeth Anzahl der Zähne Nombre de dents Cantidad de dientes | Dp | De | Lu | L |
|--|--|--|-------|-------|-----|-----|
| | | | mm | mm | mm | mm |
| 7703R009 | 09 RPP 3-80 AL | 9 | 8,59 | 7,83 | 80 | 100 |
| 7703R010 | 10 RPP 3-80 AL | 10 | 9,55 | 8,79 | 80 | 100 |
| 7703R011 | 11 RPP 3-80 AL | 11 | 10,50 | 9,74 | 80 | 100 |
| 7703R012 | 12 RPP 3-125 AL | 12 | 11,46 | 10,70 | 125 | 145 |
| 7703R013 | 13 RPP 3-125 AL | 13 | 12,41 | 11,65 | 125 | 145 |
| 7703R014 | 14 RPP 3-125 AL | 14 | 13,37 | 12,61 | 125 | 145 |
| 7703R015 | 15 RPP 3-125 AL | 15 | 14,32 | 13,56 | 125 | 145 |
| 7703R016 | 16 RPP 3-125 AL | 16 | 15,28 | 14,52 | 125 | 145 |
| 7703R017 | 17 RPP 3-125 AL | 17 | 16,23 | 15,47 | 125 | 145 |
| 7703R018 | 18 RPP 3-125 AL | 18 | 17,19 | 16,43 | 125 | 145 |
| 7703R019 | 19 RPP 3-125 AL | 19 | 18,14 | 17,38 | 125 | 145 |
| 7703R020 | 20 RPP 3-175 AL | 20 | 19,10 | 18,34 | 175 | 190 |
| 7703R021 | 21 RPP 3-175 AL | 21 | 20,05 | 19,29 | 175 | 190 |
| 7703R022 | 22 RPP 3-175 AL | 22 | 21,01 | 20,25 | 175 | 190 |
| 7703R023 | 23 RPP 3-175 AL | 23 | 21,96 | 21,20 | 175 | 190 |
| 7703R024 | 24 RPP 3-175 AL | 24 | 22,92 | 22,16 | 175 | 190 |
| 7703R025 | 25 RPP 3-175 AL | 25 | 23,87 | 23,11 | 175 | 190 |
| 7703R026 | 26 RPP 3-175 AL | 26 | 24,83 | 24,07 | 175 | 190 |
| 7703R027 | 27 RPP 3-200 AL | 27 | 25,78 | 25,02 | 200 | 210 |
| 7703R028 | 28 RPP 3-200 AL | 28 | 26,74 | 25,98 | 200 | 210 |
| 7703R029 | 29 RPP 3-200 AL | 29 | 27,69 | 26,93 | 200 | 210 |
| 7703R030 | 30 RPP 3-200 AL | 30 | 28,65 | 27,89 | 200 | 210 |
| 7703R031 | 31 RPP 3-200 AL | 31 | 29,60 | 28,84 | 200 | 210 |
| 7703R032 | 32 RPP 3-200 AL | 32 | 30,56 | 29,80 | 200 | 210 |
| 7703R033 | 33 RPP 3-200 AL | 33 | 31,51 | 30,75 | 200 | 210 |
| 7703R034 | 34 RPP 3-200 AL | 34 | 32,47 | 31,71 | 200 | 210 |
| 7703R035 | 35 RPP 3-200 AL | 35 | 33,42 | 32,66 | 200 | 210 |
| 7703R036 | 36 RPP 3-200 AL | 36 | 34,38 | 33,62 | 200 | 210 |
| 7703R037 | 37 RPP 3-200 AL | 37 | 35,33 | 34,57 | 200 | 210 |
| 7703R038 | 38 RPP 3-200 AL | 38 | 36,29 | 35,53 | 200 | 210 |
| 7703R039 | 39 RPP 3-200 AL | 39 | 37,24 | 36,48 | 200 | 210 |
| 7703R040 | 40 RPP 3-200 AL | 40 | 38,20 | 37,44 | 200 | 210 |
| 7703R042 | 42 RPP 3-200 AL | 42 | 40,11 | 39,35 | 200 | 210 |
| 7703R044 | 44 RPP 3-200 AL | 44 | 42,02 | 41,26 | 200 | 210 |
| 7703R045 | 45 RPP 3-200 AL | 45 | 42,97 | 42,21 | 200 | 210 |
| 7703R048 | 48 RPP 3-200 AL | 48 | 45,84 | 45,08 | 200 | 200 |
| 7703R050 | 50 RPP 3-200 AL | 50 | 47,75 | 46,99 | 200 | 200 |
| 7703R052 | 52 RPP 3-200 AL | 52 | 49,66 | 48,90 | 200 | 200 |
| 7703R054 | 54 RPP 3-200 AL | 54 | 51,57 | 50,81 | 200 | 200 |
| 7703R056 | 56 RPP 3-200 AL | 56 | 53,48 | 52,72 | 200 | 200 |
| 7703R060 | 60 RPP 3-200 AL | 60 | 57,30 | 56,54 | 200 | 200 |
| 7703R062 | 62 RPP 3-200 AL | 62 | 59,21 | 58,45 | 200 | 200 |
| 7703R064 | 64 RPP 3-200 AL | 64 | 61,12 | 60,36 | 200 | 200 |
| 7703R066 | 66 RPP 3-200 AL | 66 | 63,03 | 62,27 | 200 | 200 |
| 7703R068 | 68 RPP 3-200 AL | 68 | 64,94 | 64,18 | 200 | 200 |
| 7703R070 | 70 RPP 3-200 AL | 70 | 66,85 | 66,09 | 200 | 200 |
| 7703R072 | 72 RPP 3-200 AL | 72 | 68,75 | 67,99 | 200 | 200 |



Barre dentate RPP

RPP timing bars

RPP Zahnstangen

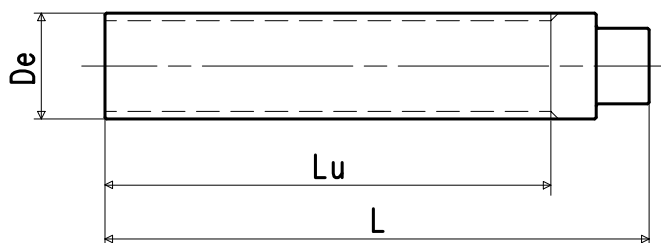
Barreaux dentés RPP

Barras dentadas RPP

Tipo di materiale - Type of material - Werkstoff - Type de matière - Tipo de material:

AL = alluminio idoneo al trattamento anodico.
aluminium suitable for the anodic oxidation.
Aluminium für die anodische Oxidation geeignet.
aluminium apte au traitement anodique.
aluminio apto para la oxidación anódica.

ST = acciaio - steel - Stahl - acier - acero



Se ancora in stock saranno consegnate barre del gruppo merceologico 17.

We will deliver bars of item group 17 until stocks are sold out.

Solang im Vorrat vorhanden werden die Zahnstangen der Produkt-Gruppe 17 geliefert.

Nous livrerons les barreaux de la famille 17 jusqu'à l'épuisement du stock.

Entregaremos las barras del grupo 17 hasta el agotamiento del stock.

Barre con numero denti non a catalogo fornibili su richiesta.

Please consult us for timing bars with teeth numbers not included in the standard range.

Bei Zahnstangen mit Sonderzähnezahlen bitte nachfragen.

Veuillez nous consulter pour les barreaux dentés avec des nombres de dents hors standard.

Les rogamos consulten para las barras dentadas con números de dientes no incluidos en la gama estándar.

RPP 5

Passo - Pitch - Teilung - Pas - Paso 5 mm

| Codice Item number Codierung Code Código | Descrizione Designation Bezeichnung Désignation Referencia | N° denti N. of teeth Anzahl der Zähne Nombre de dents Cantidad de dientes | Dp mm | De mm | Lu mm | L mm |
|--|--|--|----------|----------|----------|---------|
| 7705R012 | 12 RPP 5-175 AL | 12 | 19,10 | 17,96 | 175 | 190 |
| 7705R012X | 12 RPP 5-175 ST | 12 | 19,10 | 17,96 | 175 | 190 |
| 7705R013 | 13 RPP 5-175 AL | 13 | 20,69 | 19,55 | 175 | 190 |
| 7705R013X | 13 RPP 5-175 ST | 13 | 20,69 | 19,55 | 175 | 190 |
| 7705R014 | 14 RPP 5-175 AL | 14 | 22,28 | 21,14 | 175 | 190 |
| 7705R014X | 14 RPP 5-175 ST | 14 | 22,28 | 21,14 | 175 | 190 |
| 7705R015 | 15 RPP 5-175 AL | 15 | 23,87 | 22,73 | 175 | 190 |
| 7705R015X | 15 RPP 5-175 ST | 15 | 23,87 | 22,73 | 175 | 190 |
| 7705R016 | 16 RPP 5-175 AL | 16 | 25,46 | 24,32 | 175 | 190 |
| 7705R016X | 16 RPP 5-175 ST | 16 | 25,46 | 24,32 | 175 | 190 |
| 7705R017 | 17 RPP 5-200 AL | 17 | 27,06 | 25,92 | 200 | 210 |
| 7705R017X | 17 RPP 5-200 ST | 17 | 27,06 | 25,92 | 200 | 210 |
| 7705R018 | 18 RPP 5-200 AL | 18 | 28,65 | 27,51 | 200 | 210 |
| 7705R018X | 18 RPP 5-200 ST | 18 | 28,65 | 27,51 | 200 | 210 |
| 7705R019 | 19 RPP 5-200 AL | 19 | 30,24 | 29,10 | 200 | 210 |
| 7705R019X | 19 RPP 5-200 ST | 19 | 30,24 | 29,10 | 200 | 210 |
| 7705R020 | 20 RPP 5-200 AL | 20 | 31,83 | 30,69 | 200 | 210 |
| 7705R020X | 20 RPP 5-200 ST | 20 | 31,83 | 30,69 | 200 | 210 |
| 7705R021 | 21 RPP 5-200 AL | 21 | 33,42 | 32,28 | 200 | 210 |
| 7705R021X | 21 RPP 5-200 ST | 21 | 33,42 | 32,28 | 200 | 210 |
| 7705R022 | 22 RPP 5-200 AL | 22 | 35,01 | 33,87 | 200 | 210 |
| 7705R022X | 22 RPP 5-200 ST | 22 | 35,01 | 33,87 | 200 | 210 |
| 7705R023 | 23 RPP 5-200 AL | 23 | 36,61 | 35,47 | 200 | 210 |
| 7705R023X | 23 RPP 5-200 ST | 23 | 36,61 | 35,47 | 200 | 210 |
| 7705R024 | 24 RPP 5-200 AL | 24 | 38,20 | 37,06 | 200 | 210 |
| 7705R024X | 24 RPP 5-200 ST | 24 | 38,20 | 37,06 | 200 | 210 |
| 7705R025 | 25 RPP 5-200 AL | 25 | 39,79 | 38,65 | 200 | 210 |
| 7705R025X | 25 RPP 5-200 ST | 25 | 39,79 | 38,65 | 200 | 210 |
| 7705R026 | 26 RPP 5-200 AL | 26 | 41,38 | 40,24 | 200 | 210 |
| 7705R026X | 26 RPP 5-200 ST | 26 | 41,38 | 40,24 | 200 | 210 |
| 7705R027 | 27 RPP 5-200 AL | 27 | 42,97 | 41,83 | 200 | 210 |
| 7705R027X | 27 RPP 5-200 ST | 27 | 42,97 | 41,83 | 200 | 210 |
| 7705R028 | 28 RPP 5-200 AL | 28 | 44,56 | 43,42 | 200 | 210 |
| 7705R028X | 28 RPP 5-200 ST | 28 | 44,56 | 43,42 | 200 | 210 |
| 7705R029 | 29 RPP 5-200 AL | 29 | 46,15 | 45,01 | 200 | 200 |
| 7705R029X | 29 RPP 5-200 ST | 29 | 46,15 | 45,01 | 200 | 200 |
| 7705R030 | 30 RPP 5-200 AL | 30 | 47,75 | 46,60 | 200 | 200 |
| 7705R030X | 30 RPP 5-200 ST | 30 | 47,75 | 46,60 | 200 | 200 |

| Codice Item number Codierung Code Código | Descrizione Designation Bezeichnung Désignation Referencia | N° denti N. of teeth Anzahl der Zähne Nombre de dents Cantidad de dientes | Dp mm | De mm | Lu mm | L mm |
|--|--|--|----------|----------|----------|---------|
| 7705R031 | 31 RPP 5-200 AL | 31 | 49,34 | 48,20 | 200 | 200 |
| 7705R031X | 31 RPP 5-200 ST | 31 | 49,34 | 48,20 | 200 | 200 |
| 7705R032 | 32 RPP 5-200 AL | 32 | 50,93 | 49,79 | 200 | 200 |
| 7705R032X | 32 RPP 5-200 ST | 32 | 50,93 | 49,79 | 200 | 200 |
| 7705R033 | 33 RPP 5-200 AL | 33 | 52,52 | 51,38 | 200 | 200 |
| 7705R033X | 33 RPP 5-200 ST | 33 | 52,52 | 51,38 | 200 | 200 |
| 7705R034 | 34 RPP 5-200 AL | 34 | 54,11 | 52,97 | 200 | 200 |
| 7705R034X | 34 RPP 5-200 ST | 34 | 54,11 | 52,97 | 200 | 200 |
| 7705R035 | 35 RPP 5-200 AL | 35 | 55,70 | 54,56 | 200 | 200 |
| 7705R035X | 35 RPP 5-200 ST | 35 | 55,70 | 54,56 | 200 | 200 |
| 7705R036 | 36 RPP 5-200 AL | 36 | 57,30 | 56,16 | 200 | 200 |
| 7705R036X | 36 RPP 5-200 ST | 36 | 57,30 | 56,16 | 200 | 200 |
| 7705R038 | 38 RPP 5-200 AL | 38 | 60,48 | 59,34 | 200 | 200 |
| 7705R038X | 38 RPP 5-200 ST | 38 | 60,48 | 59,34 | 200 | 200 |
| 7705R040 | 40 RPP 5-200 AL | 40 | 63,66 | 62,52 | 200 | 200 |
| 7705R040X | 40 RPP 5-200 ST | 40 | 63,66 | 62,52 | 200 | 200 |
| 7705R042 | 42 RPP 5-200 AL | 42 | 66,85 | 65,71 | 200 | 200 |
| 7705R042X | 42 RPP 5-200 ST | 42 | 66,85 | 65,71 | 200 | 200 |
| 7705R044 | 44 RPP 5-200 AL | 44 | 70,03 | 68,89 | 200 | 200 |
| 7705R044X | 44 RPP 5-200 ST | 44 | 70,03 | 68,89 | 200 | 200 |
| 7705R045 | 45 RPP 5-200 AL | 45 | 71,62 | 70,48 | 200 | 200 |
| 7705R045X | 45 RPP 5-200 ST | 45 | 71,62 | 70,48 | 200 | 200 |
| 7705R046 | 46 RPP 5-200 AL | 46 | 73,21 | 72,07 | 200 | 200 |
| 7705R046X | 46 RPP 5-200 ST | 46 | 73,21 | 72,07 | 200 | 200 |
| 7705R048 | 48 RPP 5-200 AL | 48 | 76,39 | 75,25 | 200 | 200 |
| 7705R048X | 48 RPP 5-200 ST | 48 | 76,39 | 75,25 | 200 | 200 |
| 7705R050 | 50 RPP 5-200 AL | 50 | 79,58 | 78,43 | 200 | 200 |
| 7705R050X | 50 RPP 5-200 ST | 50 | 79,58 | 78,43 | 200 | 200 |
| 7705R054 | 54 RPP 5-200 AL | 54 | 85,94 | 84,80 | 200 | 200 |
| 7705R054X | 54 RPP 5-200 ST | 54 | 85,94 | 84,80 | 200 | 200 |
| 7705R060 | 60 RPP 5-200 AL | 60 | 95,49 | 94,35 | 200 | 200 |
| 7705R060X | 60 RPP 5-200 ST | 60 | 95,49 | 94,35 | 200 | 200 |
| 7705R062 | 62 RPP 5-200 AL | 62 | 98,68 | 97,54 | 200 | 200 |
| 7705R062X | 62 RPP 5-200 ST | 62 | 98,68 | 97,54 | 200 | 200 |
| 7705R072 | 72 RPP 5-200 AL | 72 | 114,59 | 113,45 | 200 | 200 |
| 7705R072X | 72 RPP 5-200 ST | 72 | 114,59 | 113,45 | 200 | 200 |
| 7705R075 | 75 RPP 5-200 AL | 75 | 119,37 | 118,23 | 200 | 200 |
| 7705R075X | 75 RPP 5-200 ST | 75 | 119,37 | 118,23 | 200 | 200 |



Barre dentate RPP

RPP timing bars

RPP Zahnstangen

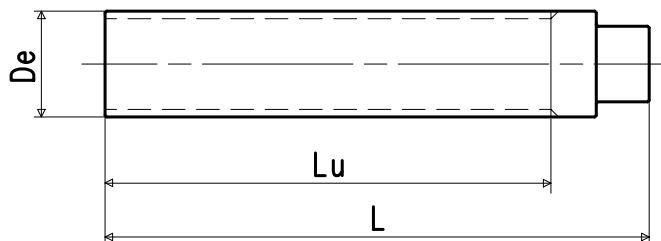
Barreaux dentés RPP

Barras dentadas RPP

Tipo di materiale - Type of material - Werkstoff - Type de matière - Tipo de material:

AL = alluminio idoneo al trattamento anodico.
aluminium suitable for the anodic oxidation.
Aluminium für die anodische Oxidation geeignet.
aluminium apte au traitement anodique.
aluminio apto para la oxidación anódica.

ST = acciaio - steel - Stahl - acier - acero



Se ancora in stock saranno consegnate barre del gruppo merceologico 17.

We will deliver bars of item group 17 until stocks are sold out.

Solang im Vorrat vorhanden werden die Zahnstangen der Produkt-Gruppe 17 geliefert.

Nous livrerons les barreaux de la famille 17 jusqu'à l'épuisement du stock.

Entregaremos las barras del grupo 17 hasta el agotamiento del stock.

Barre con numero denti non a catalogo fornibili su richiesta.

Please consult us for timing bars with teeth numbers not included in the standard range.

Bei Zahnstangen mit Sonderzähnezahlen bitte nachfragen.

Veuillez nous consulter pour les barreaux dentés avec des nombres de dents hors standard.

Les rogamos consulten para las barras dentadas con números de dientes no incluidos en la gama estándar.

RPP 8

Passo - Pitch - Teilung - Pas - Paso 8 mm

| Codice Item number Codierung Code Código | Descrizione Designation Bezeichnung Désignation Referencia | N° denti N. of teeth Anzahl der Zähne Nombre de dents Cantidad de dientes | Dp mm | De mm | Lu mm | L mm |
|--|--|--|----------|----------|----------|---------|
| 7708R018 | 18 RPP 8-200 AL | 18 | 45,84 | 44,46 | 200 | 200 |
| 7708R018X | 18 RPP 8-200 ST | 18 | 45,84 | 44,46 | 200 | 200 |
| 7708R019 | 19 RPP 8-200 AL | 19 | 48,38 | 47,01 | 200 | 200 |
| 7708R019X | 19 RPP 8-200 ST | 19 | 48,38 | 47,01 | 200 | 200 |
| 7708R020 | 20 RPP 8-200 AL | 20 | 50,93 | 49,56 | 200 | 200 |
| 7708R020X | 20 RPP 8-200 ST | 20 | 50,93 | 49,56 | 200 | 200 |
| 7708R021 | 21 RPP 8-200 AL | 21 | 53,48 | 52,10 | 200 | 200 |
| 7708R021X | 21 RPP 8-200 ST | 21 | 53,48 | 52,10 | 200 | 200 |
| 7708R022 | 22 RPP 8-200 AL | 22 | 56,02 | 54,65 | 200 | 200 |
| 7708R022X | 22 RPP 8-200 ST | 22 | 56,02 | 54,65 | 200 | 200 |
| 7708R023 | 23 RPP 8-200 AL | 23 | 58,57 | 57,20 | 200 | 200 |
| 7708R023X | 23 RPP 8-200 ST | 23 | 58,57 | 57,20 | 200 | 200 |
| 7708R024 | 24 RPP 8-200 AL | 24 | 61,12 | 59,75 | 200 | 200 |
| 7708R024X | 24 RPP 8-200 ST | 24 | 61,12 | 59,75 | 200 | 200 |
| 7708R025 | 25 RPP 8-200 AL | 25 | 63,66 | 62,29 | 200 | 200 |
| 7708R025X | 25 RPP 8-200 ST | 25 | 63,66 | 62,29 | 200 | 200 |
| 7708R026 | 26 RPP 8-200 AL | 26 | 66,21 | 64,84 | 200 | 200 |
| 7708R026X | 26 RPP 8-200 ST | 26 | 66,21 | 64,84 | 200 | 200 |
| 7708R027 | 27 RPP 8-200 AL | 27 | 68,75 | 67,38 | 200 | 200 |
| 7708R027X | 27 RPP 8-200 ST | 27 | 68,75 | 67,38 | 200 | 200 |
| 7708R028 | 28 RPP 8-200 AL | 28 | 71,30 | 70,08 | 200 | 200 |
| 7708R028X | 28 RPP 8-200 ST | 28 | 71,30 | 70,08 | 200 | 200 |
| 7708R029 | 29 RPP 8-200 AL | 29 | 73,85 | 72,62 | 200 | 200 |
| 7708R029X | 29 RPP 8-200 ST | 29 | 73,85 | 72,62 | 200 | 200 |
| 7708R030 | 30 RPP 8-200 AL | 30 | 76,39 | 75,13 | 200 | 200 |
| 7708R030X | 30 RPP 8-200 ST | 30 | 76,39 | 75,13 | 200 | 200 |
| 7708R032 | 32 RPP 8-200 AL | 32 | 81,49 | 80,16 | 200 | 200 |
| 7708R032X | 32 RPP 8-200 ST | 32 | 81,49 | 80,16 | 200 | 200 |
| 7708R034 | 34 RPP 8-200 AL | 34 | 86,58 | 85,22 | 200 | 200 |
| 7708R034X | 34 RPP 8-200 ST | 34 | 86,58 | 85,22 | 200 | 200 |
| 7708R035 | 35 RPP 8-200 AL | 35 | 89,13 | 87,76 | 200 | 200 |
| 7708R035X | 35 RPP 8-200 ST | 35 | 89,13 | 87,76 | 200 | 200 |
| 7708R036 | 36 RPP 8-200 AL | 36 | 91,67 | 90,30 | 200 | 200 |
| 7708R036X | 36 RPP 8-200 ST | 36 | 91,67 | 90,30 | 200 | 200 |
| 7708R038 | 38 RPP 8-200 AL | 38 | 96,77 | 95,39 | 200 | 200 |
| 7708R038X | 38 RPP 8-200 ST | 38 | 96,77 | 95,39 | 200 | 200 |
| 7708R040 | 40 RPP 8-200 AL | 40 | 101,86 | 100,49 | 200 | 200 |
| 7708R040X | 40 RPP 8-200 ST | 40 | 101,86 | 100,49 | 200 | 200 |

| Codice Item number Codierung Code Código | Descrizione Designation Bezeichnung Désignation Referencia | N° denti N. of teeth Anzahl der Zähne Nombre de dents Cantidad de dientes | Dp mm | De mm | Lu mm | L mm |
|--|--|--|----------|----------|----------|---------|
| 7708R042 | 42 RPP 8-200 AL | 42 | 106,95 | 105,58 | 200 | 200 |
| 7708R042X | 42 RPP 8-200 ST | 42 | 106,95 | 105,58 | 200 | 200 |
| 7708R044 | 44 RPP 8-200 AL | 44 | 112,05 | 110,67 | 200 | 200 |
| 7708R044X | 44 RPP 8-200 ST | 44 | 112,05 | 110,67 | 200 | 200 |
| 7708R045 | 45 RPP 8-200 AL | 45 | 114,59 | 113,22 | 200 | 200 |
| 7708R045X | 45 RPP 8-200 ST | 45 | 114,59 | 113,22 | 200 | 200 |
| 7708R048 | 48 RPP 8-200 AL | 48 | 122,23 | 120,86 | 200 | 200 |
| 7708R048X | 48 RPP 8-200 ST | 48 | 122,23 | 120,86 | 200 | 200 |
| 7708R050 | 50 RPP 8-200 AL | 50 | 127,32 | 125,95 | 200 | 200 |
| 7708R050X | 50 RPP 8-200 ST | 50 | 127,32 | 125,95 | 200 | 200 |
| 7708R056 | 56 RPP 8-200 AL | 56 | 142,60 | 141,23 | 200 | 200 |
| 7708R056X | 56 RPP 8-200 ST | 56 | 142,60 | 141,23 | 200 | 200 |
| 7708R060 | 60 RPP 8-200 AL | 60 | 152,79 | 151,42 | 200 | 200 |
| 7708R060X | 60 RPP 8-200 ST | 60 | 152,79 | 151,42 | 200 | 200 |
| 7708R064 | 64 RPP 8-200 AL | 64 | 162,97 | 161,60 | 200 | 200 |
| 7708R064X | 64 RPP 8-200 ST | 64 | 162,97 | 161,60 | 200 | 200 |
| 7708R070 | 70 RPP 8-200 AL | 70 | 178,25 | 176,88 | 200 | 200 |
| 7708R070X | 70 RPP 8-200 ST | 70 | 178,25 | 176,88 | 200 | 200 |
| 7708R072 | 72 RPP 8-200 AL | 72 | 183,35 | 181,97 | 200 | 200 |
| 7708R072X | 72 RPP 8-200 ST | 72 | 183,35 | 181,97 | 200 | 200 |
| 7708R075 | 75 RPP 8-200 AL | 75 | 190,99 | 189,61 | 200 | 200 |
| 7708R075X | 75 RPP 8-200 ST | 75 | 190,99 | 189,61 | 200 | 200 |



Barre dentate passo metrico T

Timing bars metric pitch T
Zahnstangen metrische T Teilung
Barreaux dentés pas métrique T
Barras dentadas paso métrico T

| Novità | New | Neu | Nouveauté | Novedad |
|---|--|---|--|---|
| <p>Le caratteristiche delle nuove barre (Gr. 77), rispetto alle precedenti (Gr. 17), sono le seguenti:</p> <ul style="list-style-type: none"> - Aumento della gamma; - Aumento della lunghezza utile dentata Lu; - La possibilità di scelta del materiale, per alcuni passi, fra acciaio e alluminio. <p>Se ancora in stock saranno consegnate barre del gruppo merceologico 17.</p> <p>Le barre T 2,5 sono a scorta solo in alluminio idoneo al trattamento anodico.</p> <p>Barre con numero denti non a catalogo fornibili su richiesta.</p> | <p>The main features of new bars (Item group 77) with regard to previous ones (item group 17) are:</p> <ul style="list-style-type: none"> - Range extension; - Enlargement of usable length Lu; - Possibility of choosing the material (steel or aluminium) in some bar pitches. <p>We will deliver bars of item group 17 until stocks are sold out.</p> <p>Stock T 2,5 timing bars are only made of aluminium suitable for the anodic oxidation.</p> <p>Please consult us for timing bars with teeth numbers not included in the standard range.</p> | <p>Die Hauptmerkmale der neuen Zahnstangen (Artikel-Gruppe 77) im Vergleich zu den alten (Artikel-Gruppe 17) sind:</p> <ul style="list-style-type: none"> - Erweiterung des Bereiches; - Verlängerung der Nutzlänge Lu; - Für einige Teilungen kann das Material (Stahl oder Aluminium) ausgewählt werden. <p>Solang im Vorrat vorhanden werden die Zahnstangen der Produkt-Gruppe 17 geliefert.</p> <p>Die T 2,5 Zahnstangen werden nur aus Aluminium hergestellt und sind für die anodische Oxidation geeignet.</p> <p>Bei Zahnstangen mit Sonderzähnezahlen bitte nachfragen.</p> | <p>Les caractéristiques des nouveaux barreaux (code famille 77) par rapport aux précédents (code famille 17) sont les suivantes:</p> <ul style="list-style-type: none"> - Enrichissement de la gamme; - Allongement de la longueur dentée utile Lu; - Possibilité de choisir la matière (acier ou aluminium) pour quelques pas. <p>Nous livrerons les barreaux de la famille 17 jusqu'à l'épuisement du stock.</p> <p>Les barreaux T 2,5 ne sont fabriqués qu'en aluminium apte au traitement anodique.</p> <p>Veillez nous consulter pour les barreaux dentés avec des nombres de dents hors standard.</p> | <p>Las características de las nuevas barras (grupo producto 77) con respecto de las precedentes (grupo producto 17) son las siguientes:</p> <ul style="list-style-type: none"> - Ampliación de la gama; - Alargamiento de la longitud dentada útil Lu; - Posibilidad de elegir el material (acero o aluminio) para unos pasos. <p>Entregaremos las barras del grupo 17 hasta el agotamiento del stock.</p> <p>Las barras T 2,5 sólo se fabrican de aluminio apto para la oxidación anódica.</p> <p>Les rogamos consulten para las barras dentadas con números de dientes no incluidos en la gama estándar.</p> |

T 2,5 Passo - Pitch - Teilung - Pas - Paso 2,5 mm

| Codice Item number Codierung Code Código | Descrizione Designation Bezeichnung Désignation Referencia | N° denti N. of teeth Anzahl der Zähne Nombre de dents Cantidad de dientes | Dp mm | De mm | Lu mm | L mm |
|--|--|--|----------|----------|----------|---------|
| 77T02010 | 10 T 2,5-80 AL | 10 | 7,96 | 7,42 | 80 | 100 |
| 77T02012 | 12 T 2,5-80 AL | 12 | 9,55 | 9,00 | 80 | 100 |
| 77T02013 | 13 T 2,5-125 AL | 13 | 10,35 | 9,80 | 125 | 145 |
| 77T02014 | 14 T 2,5-125 AL | 14 | 11,14 | 10,60 | 125 | 145 |
| 77T02015 | 15 T 2,5-125 AL | 15 | 11,94 | 11,40 | 125 | 145 |
| 77T02016 | 16 T 2,5-125 AL | 16 | 12,73 | 12,20 | 125 | 145 |
| 77T02017 | 17 T 2,5-125 AL | 17 | 13,53 | 13,00 | 125 | 145 |
| 77T02018 | 18 T 2,5-125 AL | 18 | 14,32 | 13,80 | 125 | 145 |
| 77T02019 | 19 T 2,5-125 AL | 19 | 15,12 | 14,60 | 125 | 145 |
| 77T02020 | 20 T 2,5-125 AL | 20 | 15,92 | 15,40 | 125 | 145 |
| 77T02021 | 21 T 2,5-125 AL | 21 | 16,71 | 16,20 | 125 | 145 |
| 77T02022 | 22 T 2,5-125 AL | 22 | 17,51 | 17,00 | 125 | 145 |
| 77T02023 | 23 T 2,5-175 AL | 23 | 18,30 | 17,78 | 175 | 190 |
| 77T02024 | 24 T 2,5-175 AL | 24 | 19,10 | 18,55 | 175 | 190 |
| 77T02025 | 25 T 2,5-175 AL | 25 | 19,89 | 19,35 | 175 | 190 |
| 77T02026 | 26 T 2,5-175 AL | 26 | 20,69 | 20,15 | 175 | 190 |
| 77T02027 | 27 T 2,5-175 AL | 27 | 21,49 | 20,95 | 175 | 190 |
| 77T02028 | 28 T 2,5-175 AL | 28 | 22,28 | 21,75 | 175 | 190 |
| 77T02029 | 29 T 2,5-175 AL | 29 | 23,08 | 22,55 | 175 | 190 |
| 77T02030 | 30 T 2,5-175 AL | 30 | 23,87 | 23,35 | 175 | 190 |
| 77T02032 | 32 T 2,5-200 AL | 32 | 25,46 | 24,95 | 200 | 210 |
| 77T02034 | 34 T 2,5-200 AL | 34 | 27,06 | 26,55 | 200 | 210 |
| 77T02035 | 35 T 2,5-200 AL | 35 | 27,85 | 27,35 | 200 | 210 |
| 77T02036 | 36 T 2,5-200 AL | 36 | 28,65 | 28,10 | 200 | 210 |
| 77T02038 | 38 T 2,5-200 AL | 38 | 30,24 | 29,70 | 200 | 210 |
| 77T02040 | 40 T 2,5-200 AL | 40 | 31,83 | 31,30 | 200 | 210 |
| 77T02042 | 42 T 2,5-200 AL | 42 | 33,42 | 32,90 | 200 | 210 |
| 77T02044 | 44 T 2,5-200 AL | 44 | 35,01 | 34,50 | 200 | 210 |
| 77T02045 | 45 T 2,5-200 AL | 45 | 35,81 | 35,30 | 200 | 210 |
| 77T02048 | 48 T 2,5-200 AL | 48 | 38,20 | 37,70 | 200 | 210 |
| 77T02050 | 50 T 2,5-200 AL | 50 | 39,79 | 39,29 | 200 | 210 |
| 77T02060 | 60 T 2,5-200 AL | 60 | 47,75 | 47,25 | 200 | 200 |
| 77T02065 | 65 T 2,5-200 AL | 65 | 51,73 | 51,20 | 200 | 200 |
| 77T02070 | 70 T 2,5-200 AL | 70 | 55,70 | 55,20 | 200 | 200 |
| 77T02072 | 72 T 2,5-200 AL | 72 | 57,30 | 56,80 | 200 | 200 |
| 77T02090 | 90 T 2,5-200 AL | 90 | 71,62 | 71,12 | 200 | 200 |
| 77T02100 | 100 T 2,5-200 AL | 100 | 79,58 | 79,08 | 200 | 200 |



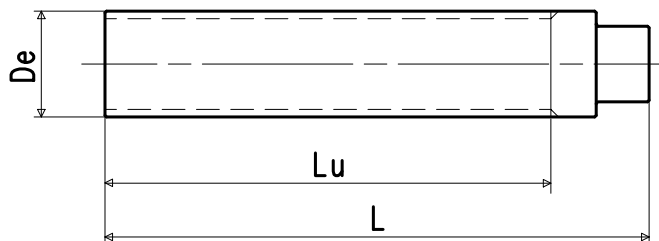
Barre dentate passo metrico T

Timing bars metric pitch T
Zahnstangen metrische T Teilung
Barreaux dentés pas métrique T
Barras dentadas paso métrico T

Tipo di materiale - Type of material - Werkstoff - Type de matière - Tipo de material:

AL = alluminio idoneo al trattamento anodico.
aluminium suitable for the anodic oxidation.
Aluminium für die anodische Oxidation geeignet.
aluminium apte au traitement anodique.
aluminio apto para la oxidación anódica.

ST = acciaio - steel - Stahl - acier - acero



Se ancora in stock saranno consegnate barre del gruppo merceologico 17.

We will deliver bars of item group 17 until stocks are sold out.

Solang im Vorrat vorhanden werden die Zahnstangen der Produkt-Gruppe 17 geliefert.

Nous livrerons les barreaux de la famille 17 jusqu'à l'épuisement du stock.

Entregaremos las barras del grupo 17 hasta el agotamiento del stock.

Barre con numero denti non a catalogo fornibili su richiesta.

Please consult us for timing bars with teeth numbers not included in the standard range.

Bei Zahnstangen mit Sonderzähnezahlen bitte nachfragen.

Veuillez nous consulter pour les barreaux dentés avec des nombres de dents hors standard.

Les rogamos consulten para las barras dentadas con números de dientes no incluidos en la gama estándar.

T 5 Passo - Pitch - Teilung - Pas - Paso 5 mm

| Codice Item number Codierung Code Código | Descrizione Designation Bezeichnung Désignation Referencia | N° denti N. of teeth Anzahl der Zähne Nombre de dents Cantidad de dientes | Dp mm | De mm | Lu mm | L mm |
|--|--|--|----------|----------|----------|---------|
| 77T05010 | 10 T 5-125 AL | 10 | 15,92 | 15,05 | 125 | 145 |
| 77T05010X | 10 T 5-125 ST | 10 | 15,92 | 15,05 | 125 | 145 |
| 77T05011 | 11 T 5-125 AL | 11 | 17,51 | 16,65 | 125 | 145 |
| 77T05011X | 11 T 5-125 ST | 11 | 17,51 | 16,65 | 125 | 145 |
| 77T05012 | 12 T 5-175 AL | 12 | 19,10 | 18,25 | 175 | 190 |
| 77T05012X | 12 T 5-175 ST | 12 | 19,10 | 18,25 | 175 | 190 |
| 77T05013 | 13 T 5-175 AL | 13 | 20,69 | 19,85 | 175 | 190 |
| 77T05013X | 13 T 5-175 ST | 13 | 20,69 | 19,85 | 175 | 190 |
| 77T05014 | 14 T 5-175 AL | 14 | 22,28 | 21,45 | 175 | 190 |
| 77T05014X | 14 T 5-175 ST | 14 | 22,28 | 21,45 | 175 | 190 |
| 77T05015 | 15 T 5-175 AL | 15 | 23,87 | 23,05 | 175 | 190 |
| 77T05015X | 15 T 5-175 ST | 15 | 23,87 | 23,05 | 175 | 190 |
| 77T05016 | 16 T 5-175 AL | 16 | 25,46 | 24,60 | 175 | 190 |
| 77T05016X | 16 T 5-175 ST | 16 | 25,46 | 24,60 | 175 | 190 |
| 77T05017 | 17 T 5-200 AL | 17 | 27,06 | 26,20 | 200 | 210 |
| 77T05017X | 17 T 5-200 ST | 17 | 27,06 | 26,20 | 200 | 210 |
| 77T05018 | 18 T 5-200 AL | 18 | 28,65 | 27,80 | 200 | 210 |
| 77T05018X | 18 T 5-200 ST | 18 | 28,65 | 27,80 | 200 | 210 |
| 77T05019 | 19 T 5-200 AL | 19 | 30,24 | 29,40 | 200 | 210 |
| 77T05019X | 19 T 5-200 ST | 19 | 30,24 | 29,40 | 200 | 210 |
| 77T05020 | 20 T 5-200 AL | 20 | 31,83 | 31,00 | 200 | 210 |
| 77T05020X | 20 T 5-200 ST | 20 | 31,83 | 31,00 | 200 | 210 |
| 77T05021 | 21 T 5-200 AL | 21 | 33,42 | 32,70 | 200 | 210 |
| 77T05021X | 21 T 5-200 ST | 21 | 33,42 | 32,70 | 200 | 210 |
| 77T05022 | 22 T 5-200 AL | 22 | 35,01 | 34,25 | 200 | 210 |
| 77T05022X | 22 T 5-200 ST | 22 | 35,01 | 34,25 | 200 | 210 |
| 77T05023 | 23 T 5-200 AL | 23 | 36,61 | 35,85 | 200 | 210 |
| 77T05023X | 23 T 5-200 ST | 23 | 36,61 | 35,85 | 200 | 210 |
| 77T05024 | 24 T 5-200 AL | 24 | 38,20 | 37,40 | 200 | 210 |
| 77T05024X | 24 T 5-200 ST | 24 | 38,20 | 37,40 | 200 | 210 |
| 77T05025 | 25 T 5-200 AL | 25 | 39,79 | 39,00 | 200 | 210 |
| 77T05025X | 25 T 5-200 ST | 25 | 39,79 | 39,00 | 200 | 210 |
| 77T05026 | 26 T 5-200 AL | 26 | 41,38 | 40,60 | 200 | 210 |
| 77T05026X | 26 T 5-200 ST | 26 | 41,38 | 40,60 | 200 | 210 |
| 77T05027 | 27 T 5-200 AL | 27 | 42,97 | 42,20 | 200 | 210 |
| 77T05027X | 27 T 5-200 ST | 27 | 42,97 | 42,20 | 200 | 210 |
| 77T05028 | 28 T 5-200 AL | 28 | 44,56 | 43,75 | 200 | 210 |
| 77T05028X | 28 T 5-200 ST | 28 | 44,56 | 43,75 | 200 | 210 |
| 77T05029 | 29 T 5-200 AL | 29 | 46,15 | 45,35 | 200 | 200 |
| 77T05029X | 29 T 5-200 ST | 29 | 46,15 | 45,35 | 200 | 200 |
| 77T05030 | 30 T 5-200 AL | 30 | 47,75 | 46,95 | 200 | 200 |
| 77T05030X | 30 T 5-200 ST | 30 | 47,75 | 46,95 | 200 | 200 |

| Codice Item number Codierung Code Código | Descrizione Designation Bezeichnung Désignation Referencia | N° denti N. of teeth Anzahl der Zähne Nombre de dents Cantidad de dientes | Dp mm | De mm | Lu mm | L mm |
|--|--|--|----------|----------|----------|---------|
| 77T05032 | 32 T 5-200 AL | 32 | 50,93 | 50,10 | 200 | 200 |
| 77T05032X | 32 T 5-200 ST | 32 | 50,93 | 50,10 | 200 | 200 |
| 77T05034 | 34 T 5-200 AL | 34 | 54,11 | 53,25 | 200 | 200 |
| 77T05034X | 34 T 5-200 ST | 34 | 54,11 | 53,25 | 200 | 200 |
| 77T05035 | 35 T 5-200 AL | 35 | 55,70 | 54,85 | 200 | 200 |
| 77T05035X | 35 T 5-200 ST | 35 | 55,70 | 54,85 | 200 | 200 |
| 77T05036 | 36 T 5-200 AL | 36 | 57,30 | 56,45 | 200 | 200 |
| 77T05036X | 36 T 5-200 ST | 36 | 57,30 | 56,45 | 200 | 200 |
| 77T05037 | 37 T 5-200 AL | 37 | 58,89 | 58,06 | 200 | 200 |
| 77T05037X | 37 T 5-200 ST | 37 | 58,89 | 58,06 | 200 | 200 |
| 77T05038 | 38 T 5-200 AL | 38 | 60,48 | 59,65 | 200 | 200 |
| 77T05038X | 38 T 5-200 ST | 38 | 60,48 | 59,65 | 200 | 200 |
| 77T05040 | 40 T 5-200 AL | 40 | 63,66 | 62,85 | 200 | 200 |
| 77T05040X | 40 T 5-200 ST | 40 | 63,66 | 62,85 | 200 | 200 |
| 77T05042 | 42 T 5-200 AL | 42 | 66,85 | 66,00 | 200 | 200 |
| 77T05042X | 42 T 5-200 ST | 42 | 66,85 | 66,00 | 200 | 200 |
| 77T05044 | 44 T 5-200 AL | 44 | 70,03 | 69,20 | 200 | 200 |
| 77T05044X | 44 T 5-200 ST | 44 | 70,03 | 69,20 | 200 | 200 |
| 77T05045 | 45 T 5-200 AL | 45 | 71,62 | 70,80 | 200 | 200 |
| 77T05045X | 45 T 5-200 ST | 45 | 71,62 | 70,80 | 200 | 200 |
| 77T05046 | 46 T 5-200 AL | 46 | 73,21 | 72,40 | 200 | 200 |
| 77T05046X | 46 T 5-200 ST | 46 | 73,21 | 72,40 | 200 | 200 |
| 77T05048 | 48 T 5-200 AL | 48 | 76,39 | 75,55 | 200 | 200 |
| 77T05048X | 48 T 5-200 ST | 48 | 76,39 | 75,55 | 200 | 200 |
| 77T05050 | 50 T 5-200 AL | 50 | 79,58 | 78,75 | 200 | 200 |
| 77T05050X | 50 T 5-200 ST | 50 | 79,58 | 78,75 | 200 | 200 |
| 77T05058 | 58 T 5-200 AL | 58 | 92,31 | 91,48 | 200 | 200 |
| 77T05058X | 58 T 5-200 ST | 58 | 92,31 | 91,48 | 200 | 200 |
| 77T05060 | 60 T 5-200 AL | 60 | 95,49 | 94,65 | 200 | 200 |
| 77T05060X | 60 T 5-200 ST | 60 | 95,49 | 94,65 | 200 | 200 |
| 77T05070 | 70 T 5-200 AL | 70 | 111,41 | 110,58 | 200 | 200 |
| 77T05070X | 70 T 5-200 ST | 70 | 111,41 | 110,58 | 200 | 200 |
| 77T05072 | 72 T 5-200 AL | 72 | 114,59 | 113,75 | 200 | 200 |
| 77T05072X | 72 T 5-200 ST | 72 | 114,59 | 113,75 | 200 | 200 |
| 77T05075 | 75 T 5-200 AL | 75 | 119,37 | 118,53 | 200 | 200 |
| 77T05075X | 75 T 5-200 ST | 75 | 119,37 | 118,53 | 200 | 200 |
| 77T05080 | 80 T 5-200 AL | 80 | 127,32 | 126,48 | 200 | 200 |
| 77T05080X | 80 T 5-200 ST | 80 | 127,32 | 126,48 | 200 | 200 |
| 77T05090 | 90 T 5-200 AL | 90 | 143,24 | 142,40 | 200 | 200 |
| 77T05090X | 90 T 5-200 ST | 90 | 143,24 | 142,40 | 200 | 200 |
| 77T05100 | 100 T 5-200 AL | 100 | 159,15 | 158,31 | 200 | 200 |
| 77T05100X | 100 T 5-200 ST | 100 | 159,15 | 158,31 | 200 | 200 |



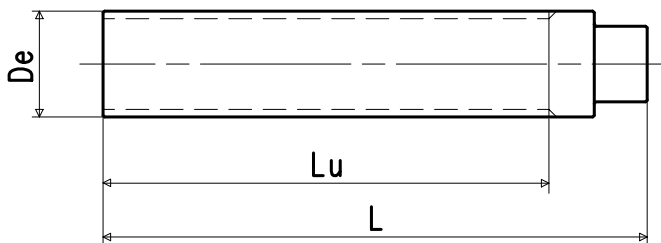
Barre dentate passo metrico T

Timing bars metric pitch T
Zahnstangen metrische T Teilung
Barreaux dentés pas métrique T
Barras dentadas paso métrico T

Tipo di materiale - Type of material - Werkstoff - Type de matière - Tipo de material:

AL = alluminio idoneo al trattamento anodico.
aluminium suitable for the anodic oxidation.
Aluminium für die anodische Oxidation geeignet.
aluminium apte au traitement anodique.
aluminio apto para la oxidación anódica.

ST = acciaio - steel - Stahl - acier - acero



Se ancora in stock saranno consegnate barre del gruppo merceologico 17.

We will deliver bars of item group 17 until stocks are sold out.

Solang im Vorrat vorhanden werden die Zahnstangen der Produkt-Gruppe 17 geliefert.

Nous livrerons les barreaux de la famille 17 jusqu'à l'épuisement du stock.

Entregaremos las barras del grupo 17 hasta el agotamiento del stock.

T 10 Passo - Pitch - Teilung - Pas - Paso 10 mm

| Codice Item number Codierung Code Código | Descrizione Designation Bezeichnung Désignation Referencia | N° denti N. of teeth Anzahl der Zähne Nombre de dents Cantidad de dientes | Dp mm | De mm | Lu mm | L mm |
|--|--|--|----------|----------|----------|---------|
| 77T10010 | 10 T10-200 AL | 10 | 31,83 | 29,98 | 200 | 210 |
| 77T10010X | 10 T10-200 ST | 10 | 31,83 | 29,98 | 200 | 210 |
| 77T10011 | 11 T10-200 AL | 11 | 35,01 | 33,16 | 200 | 210 |
| 77T10011X | 11 T10-200 ST | 11 | 35,01 | 33,16 | 200 | 210 |
| 77T10012 | 12 T10-200 AL | 12 | 38,20 | 36,35 | 200 | 210 |
| 77T10012X | 12 T10-200 ST | 12 | 38,20 | 36,35 | 200 | 210 |
| 77T10013 | 13 T10-200 AL | 13 | 41,38 | 39,50 | 200 | 210 |
| 77T10013X | 13 T10-200 ST | 13 | 41,38 | 39,50 | 200 | 210 |
| 77T10014 | 14 T10-200 AL | 14 | 44,56 | 42,70 | 200 | 210 |
| 77T10014X | 14 T10-200 ST | 14 | 44,56 | 42,70 | 200 | 210 |
| 77T10015 | 15 T10-200 AL | 15 | 47,75 | 45,90 | 200 | 200 |
| 77T10015X | 15 T10-200 ST | 15 | 47,75 | 45,90 | 200 | 200 |
| 77T10016 | 16 T10-200 AL | 16 | 50,93 | 49,05 | 200 | 200 |
| 77T10016X | 16 T10-200 ST | 16 | 50,93 | 49,05 | 200 | 200 |
| 77T10017 | 17 T10-200 AL | 17 | 54,11 | 52,25 | 200 | 200 |
| 77T10017X | 17 T10-200 ST | 17 | 54,11 | 52,25 | 200 | 200 |
| 77T10018 | 18 T10-200 AL | 18 | 57,30 | 55,45 | 200 | 200 |
| 77T10018X | 18 T10-200 ST | 18 | 57,30 | 55,45 | 200 | 200 |
| 77T10019 | 19 T10-200 AL | 19 | 60,48 | 58,60 | 200 | 200 |
| 77T10019X | 19 T10-200 ST | 19 | 60,48 | 58,60 | 200 | 200 |
| 77T10020 | 20 T10-200 AL | 20 | 63,66 | 61,80 | 200 | 200 |
| 77T10020X | 20 T10-200 ST | 20 | 63,66 | 61,80 | 200 | 200 |
| 77T10021 | 21 T10-200 AL | 21 | 66,85 | 65,00 | 200 | 200 |
| 77T10021X | 21 T10-200 ST | 21 | 66,85 | 65,00 | 200 | 200 |
| 77T10022 | 22 T10-200 AL | 22 | 70,03 | 68,15 | 200 | 200 |
| 77T10022X | 22 T10-200 ST | 22 | 70,03 | 68,15 | 200 | 200 |
| 77T10023 | 23 T10-200 AL | 23 | 73,21 | 71,35 | 200 | 200 |
| 77T10023X | 23 T10-200 ST | 23 | 73,21 | 71,35 | 200 | 200 |
| 77T10024 | 24 T10-200 AL | 24 | 76,39 | 74,55 | 200 | 200 |
| 77T10024X | 24 T10-200 ST | 24 | 76,39 | 74,55 | 200 | 200 |
| 77T10025 | 25 T10-200 AL | 25 | 79,58 | 77,70 | 200 | 200 |
| 77T10025X | 25 T10-200 ST | 25 | 79,58 | 77,70 | 200 | 200 |
| 77T10026 | 26 T10-200 AL | 26 | 82,76 | 80,90 | 200 | 200 |
| 77T10026X | 26 T10-200 ST | 26 | 82,76 | 80,90 | 200 | 200 |
| 77T10027 | 27 T10-200 AL | 27 | 85,94 | 84,10 | 200 | 200 |
| 77T10027X | 27 T10-200 ST | 27 | 85,94 | 84,10 | 200 | 200 |
| 77T10028 | 28 T10-200 AL | 28 | 89,13 | 87,25 | 200 | 200 |
| 77T10028X | 28 T10-200 ST | 28 | 89,13 | 87,25 | 200 | 200 |
| 77T10029 | 29 T10-200 AL | 29 | 92,31 | 90,47 | 200 | 200 |
| 77T10029X | 29 T10-200 ST | 29 | 92,31 | 90,47 | 200 | 200 |
| 77T10030 | 30 T10-200 AL | 30 | 95,49 | 93,65 | 200 | 200 |
| 77T10030X | 30 T10-200 ST | 30 | 95,49 | 93,65 | 200 | 200 |
| 77T10031 | 31 T10-200 AL | 31 | 98,68 | 96,80 | 200 | 200 |
| 77T10031X | 31 T10-200 ST | 31 | 98,68 | 96,80 | 200 | 200 |

| Codice Item number Codierung Code Código | Descrizione Designation Bezeichnung Désignation Referencia | N° denti N. of teeth Anzahl der Zähne Nombre de dents Cantidad de dientes | Dp mm | De mm | Lu mm | L mm |
|--|--|--|----------|----------|----------|---------|
| 77T10032 | 32 T10-200 AL | 32 | 101,86 | 100,00 | 200 | 200 |
| 77T10032X | 32 T10-200 ST | 32 | 101,86 | 100,00 | 200 | 200 |
| 77T10034 | 34 T10-200 AL | 34 | 108,23 | 106,40 | 200 | 200 |
| 77T10034X | 34 T10-200 ST | 34 | 108,23 | 106,40 | 200 | 200 |
| 77T10036 | 36 T10-200 AL | 36 | 114,59 | 112,75 | 200 | 200 |
| 77T10036X | 36 T10-200 ST | 36 | 114,59 | 112,75 | 200 | 200 |
| 77T10038 | 38 T10-200 AL | 38 | 120,96 | 119,10 | 200 | 200 |
| 77T10038X | 38 T10-200 ST | 38 | 120,96 | 119,10 | 200 | 200 |
| 77T10040 | 40 T10-200 AL | 40 | 127,32 | 125,45 | 200 | 200 |
| 77T10040X | 40 T10-200 ST | 40 | 127,32 | 125,45 | 200 | 200 |
| 77T10042 | 42 T10-200 AL | 42 | 133,69 | 131,85 | 200 | 200 |
| 77T10042X | 42 T10-200 ST | 42 | 133,69 | 131,85 | 200 | 200 |
| 77T10044 | 44 T10-200 AL | 44 | 140,06 | 138,20 | 200 | 200 |
| 77T10044X | 44 T10-200 ST | 44 | 140,06 | 138,20 | 200 | 200 |
| 77T10045 | 45 T10-200 AL | 45 | 143,24 | 141,40 | 200 | 200 |
| 77T10045X | 45 T10-200 ST | 45 | 143,24 | 141,40 | 200 | 200 |
| 77T10048 | 48 T10-200 AL | 48 | 152,79 | 150,95 | 200 | 200 |
| 77T10048X | 48 T10-200 ST | 48 | 152,79 | 150,95 | 200 | 200 |
| 77T10060 | 60 T10-200 AL | 60 | 190,99 | 189,10 | 200 | 200 |
| 77T10060X | 60 T10-200 ST | 60 | 190,99 | 189,10 | 200 | 200 |
| 77T10072 | 72 T10-200 AL | 72 | 229,18 | 227,29 | 200 | 200 |
| 77T10072X | 72 T10-200 ST | 72 | 229,18 | 227,29 | 200 | 200 |



Barre dentate passo metrico AT

Timing bars metric pitch AT

Zahnstangen metrische AT Teilung

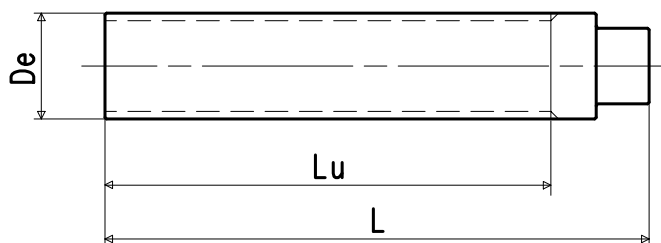
Barreaux dentés pas métrique AT

Barras dentadas paso métrico AT

Tipo di materiale - Type of material - Werkstoff - Type de matière - Tipo de material:

AL = alluminio idoneo al trattamento anodico.
aluminium suitable for the anodic oxidation.
Aluminium für die anodische Oxidation geeignet.
aluminium apte au traitement anodique.
aluminio apto para la oxidación anódica.

ST = acciaio - steel - Stahl - acier - acero



AT 5

Passo - Pitch - Teilung - Pas - Paso 5 mm

| Codice Item number Codierung Code Código | Descrizione Designation Bezeichnung Désignation Referencia | N° denti N. of teeth Anzahl der Zähne Nombre de dents Cantidad de dientes | Dp mm | De mm | Lu mm | L mm |
|--|--|--|----------|----------|----------|---------|
| 77AT05012 | 12 AT 5-175 AL | 12 | 19,10 | 17,85 | 175 | 190 |
| 77AT05012X | 12 AT 5-175 ST | 12 | 19,10 | 17,85 | 175 | 190 |
| 77AT05013 | 13 AT 5-175 AL | 13 | 20,69 | 19,45 | 175 | 190 |
| 77AT05013X | 13 AT 5-175 ST | 13 | 20,69 | 19,45 | 175 | 190 |
| 77AT05014 | 14 AT 5-175 AL | 14 | 22,28 | 21,05 | 175 | 190 |
| 77AT05014X | 14 AT 5-175 ST | 14 | 22,28 | 21,05 | 175 | 190 |
| 77AT05015 | 15 AT 5-175 AL | 15 | 23,87 | 22,65 | 175 | 190 |
| 77AT05015X | 15 AT 5-175 ST | 15 | 23,87 | 22,65 | 175 | 190 |
| 77AT05016 | 16 AT 5-175 AL | 16 | 25,46 | 24,20 | 175 | 190 |
| 77AT05016X | 16 AT 5-175 ST | 16 | 25,46 | 24,20 | 175 | 190 |
| 77AT05017 | 17 AT 5-200 AL | 17 | 27,06 | 25,80 | 200 | 210 |
| 77AT05017X | 17 AT 5-200 ST | 17 | 27,06 | 25,80 | 200 | 210 |
| 77AT05018 | 18 AT 5-200 AL | 18 | 28,65 | 27,40 | 200 | 210 |
| 77AT05018X | 18 AT 5-200 ST | 18 | 28,65 | 27,40 | 200 | 210 |
| 77AT05019 | 19 AT 5-200 AL | 19 | 30,24 | 29,00 | 200 | 210 |
| 77AT05019X | 19 AT 5-200 ST | 19 | 30,24 | 29,00 | 200 | 210 |
| 77AT05020 | 20 AT 5-200 AL | 20 | 31,83 | 30,60 | 200 | 210 |
| 77AT05020X | 20 AT 5-200 ST | 20 | 31,83 | 30,60 | 200 | 210 |
| 77AT05021 | 21 AT 5-200 AL | 21 | 33,42 | 32,30 | 200 | 210 |
| 77AT05021X | 21 AT 5-200 ST | 21 | 33,42 | 32,30 | 200 | 210 |
| 77AT05022 | 22 AT 5-200 AL | 22 | 35,01 | 33,85 | 200 | 210 |
| 77AT05022X | 22 AT 5-200 ST | 22 | 35,01 | 33,85 | 200 | 210 |
| 77AT05023 | 23 AT 5-200 AL | 23 | 36,61 | 35,45 | 200 | 210 |
| 77AT05023X | 23 AT 5-200 ST | 23 | 36,61 | 35,45 | 200 | 210 |
| 77AT05024 | 24 AT 5-200 AL | 24 | 38,20 | 37,00 | 200 | 210 |
| 77AT05024X | 24 AT 5-200 ST | 24 | 38,20 | 37,00 | 200 | 210 |
| 77AT05025 | 25 AT 5-200 AL | 25 | 39,79 | 38,60 | 200 | 210 |
| 77AT05025X | 25 AT 5-200 ST | 25 | 39,79 | 38,60 | 200 | 210 |
| 77AT05026 | 26 AT 5-200 AL | 26 | 41,38 | 40,20 | 200 | 210 |
| 77AT05026X | 26 AT 5-200 ST | 26 | 41,38 | 40,20 | 200 | 210 |
| 77AT05027 | 27 AT 5-200 AL | 27 | 42,97 | 41,80 | 200 | 210 |
| 77AT05027X | 27 AT 5-200 ST | 27 | 42,97 | 41,80 | 200 | 210 |
| 77AT05028 | 28 AT 5-200 AL | 28 | 44,56 | 43,35 | 200 | 210 |
| 77AT05028X | 28 AT 5-200 ST | 28 | 44,56 | 43,35 | 200 | 210 |
| 77AT05029 | 29 AT 5-200 AL | 29 | 46,15 | 44,95 | 200 | 200 |
| 77AT05029X | 29 AT 5-200 ST | 29 | 46,15 | 44,95 | 200 | 200 |
| 77AT05030 | 30 AT 5-200 AL | 30 | 47,75 | 46,55 | 200 | 200 |
| 77AT05030X | 30 AT 5-200 ST | 30 | 47,75 | 46,55 | 200 | 200 |
| 77AT05031 | 31 AT 5-200 AL | 31 | 49,34 | 48,15 | 200 | 200 |
| 77AT05031X | 31 AT 5-200 ST | 31 | 49,34 | 48,15 | 200 | 200 |
| 77AT05032 | 32 AT 5-200 AL | 32 | 50,93 | 49,70 | 200 | 200 |
| 77AT05032X | 32 AT 5-200 ST | 32 | 50,93 | 49,70 | 200 | 200 |
| 77AT05033 | 33 AT 5-200 AL | 33 | 52,52 | 51,30 | 200 | 200 |
| 77AT05033X | 33 AT 5-200 ST | 33 | 52,52 | 51,30 | 200 | 200 |
| 77AT05034 | 34 AT 5-200 AL | 34 | 54,11 | 52,85 | 200 | 200 |
| 77AT05034X | 34 AT 5-200 ST | 34 | 54,11 | 52,85 | 200 | 200 |
| 77AT05035 | 35 AT 5-200 AL | 35 | 55,70 | 54,45 | 200 | 200 |

| Codice Item number Codierung Code Código | Descrizione Designation Bezeichnung Désignation Referencia | N° denti N. of teeth Anzahl der Zähne Nombre de dents Cantidad de dientes | Dp mm | De mm | Lu mm | L mm |
|--|--|--|----------|----------|----------|---------|
| 77AT05035X | 35 AT 5-200 ST | 35 | 55,70 | 54,45 | 200 | 200 |
| 77AT05036 | 36 AT 5-200 AL | 36 | 57,30 | 56,05 | 200 | 200 |
| 77AT05036X | 36 AT 5-200 ST | 36 | 57,30 | 56,05 | 200 | 200 |
| 77AT05038 | 38 AT 5-200 AL | 38 | 60,48 | 59,25 | 200 | 200 |
| 77AT05038X | 38 AT 5-200 ST | 38 | 60,48 | 59,25 | 200 | 200 |
| 77AT05040 | 40 AT 5-200 AL | 40 | 63,66 | 62,45 | 200 | 200 |
| 77AT05040X | 40 AT 5-200 ST | 40 | 63,66 | 62,45 | 200 | 200 |
| 77AT05042 | 42 AT 5-200 AL | 42 | 66,85 | 65,60 | 200 | 200 |
| 77AT05042X | 42 AT 5-200 ST | 42 | 66,85 | 65,60 | 200 | 200 |
| 77AT05044 | 44 AT 5-200 AL | 44 | 70,03 | 68,80 | 200 | 200 |
| 77AT05044X | 44 AT 5-200 ST | 44 | 70,03 | 68,80 | 200 | 200 |
| 77AT05045 | 45 AT 5-200 AL | 45 | 71,62 | 70,40 | 200 | 200 |
| 77AT05045X | 45 AT 5-200 ST | 45 | 71,62 | 70,40 | 200 | 200 |
| 77AT05046 | 46 AT 5-200 AL | 46 | 73,21 | 72,00 | 200 | 200 |
| 77AT05046X | 46 AT 5-200 ST | 46 | 73,21 | 72,00 | 200 | 200 |
| 77AT05048 | 48 AT 5-200 AL | 48 | 76,39 | 75,15 | 200 | 200 |
| 77AT05048X | 48 AT 5-200 ST | 48 | 76,39 | 75,15 | 200 | 200 |
| 77AT05050 | 50 AT 5-200 AL | 50 | 79,58 | 78,35 | 200 | 200 |
| 77AT05050X | 50 AT 5-200 ST | 50 | 79,58 | 78,35 | 200 | 200 |
| 77AT05052 | 52 AT 5-200 AL | 52 | 82,76 | 81,55 | 200 | 200 |
| 77AT05052X | 52 AT 5-200 ST | 52 | 82,76 | 81,55 | 200 | 200 |
| 77AT05054 | 54 AT 5-200 AL | 54 | 85,94 | 84,70 | 200 | 200 |
| 77AT05054X | 54 AT 5-200 ST | 54 | 85,94 | 84,70 | 200 | 200 |
| 77AT05055 | 55 AT 5-200 AL | 55 | 87,54 | 86,30 | 200 | 200 |
| 77AT05055X | 55 AT 5-200 ST | 55 | 87,54 | 86,30 | 200 | 200 |
| 77AT05056 | 56 AT 5-200 AL | 56 | 89,13 | 87,90 | 200 | 200 |
| 77AT05056X | 56 AT 5-200 ST | 56 | 89,13 | 87,90 | 200 | 200 |
| 77AT05058 | 58 AT 5-200 AL | 58 | 92,31 | 91,10 | 200 | 200 |
| 77AT05058X | 58 AT 5-200 ST | 58 | 92,31 | 91,10 | 200 | 200 |
| 77AT05060 | 60 AT 5-200 AL | 60 | 95,49 | 94,25 | 200 | 200 |
| 77AT05060X | 60 AT 5-200 ST | 60 | 95,49 | 94,25 | 200 | 200 |
| 77AT05062 | 62 AT 5-200 AL | 62 | 98,68 | 97,45 | 200 | 200 |
| 77AT05062X | 62 AT 5-200 ST | 62 | 98,68 | 97,45 | 200 | 200 |
| 77AT05064 | 64 AT 5-200 AL | 64 | 101,86 | 100,65 | 200 | 200 |
| 77AT05064X | 64 AT 5-200 ST | 64 | 101,86 | 100,65 | 200 | 200 |
| 77AT05065 | 65 AT 5-200 AL | 65 | 103,45 | 102,25 | 200 | 200 |
| 77AT05065X | 65 AT 5-200 ST | 65 | 103,45 | 102,25 | 200 | 200 |
| 77AT05066 | 66 AT 5-200 AL | 66 | 105,04 | 103,82 | 200 | 200 |
| 77AT05066X | 66 AT 5-200 ST | 66 | 105,04 | 103,82 | 200 | 200 |
| 77AT05070 | 70 AT 5-200 AL | 70 | 111,41 | 110,20 | 200 | 200 |
| 77AT05070X | 70 AT 5-200 ST | 70 | 111,41 | 110,20 | 200 | 200 |
| 77AT05072 | 72 AT 5-200 AL | 72 | 114,59 | 113,35 | 200 | 200 |
| 77AT05072X | 72 AT 5-200 ST | 72 | 114,59 | 113,35 | 200 | 200 |
| 77AT05075 | 75 AT 5-200 AL | 75 | 119,37 | 118,15 | 200 | 200 |
| 77AT05075X | 75 AT 5-200 ST | 75 | 119,37 | 118,15 | 200 | 200 |
| 77AT05090 | 90 AT 5-200 AL | 90 | 143,24 | 142,02 | 200 | 200 |
| 77AT05090X | 90 AT 5-200 ST | 90 | 143,24 | 142,02 | 200 | 200 |



Barre dentate passo metrico AT

Timing bars metric pitch AT

Zahnstangen metrische AT Teilung

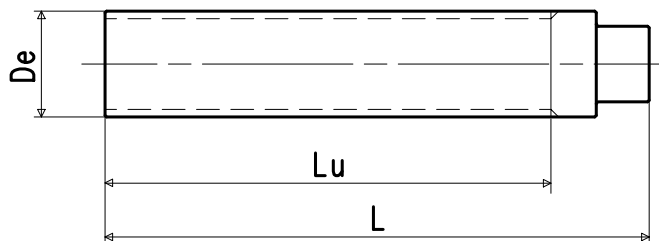
Barreaux dentés pas métrique AT

Barras dentadas paso métrico AT

Tipo di materiale - Type of material - Werkstoff - Type de matière - Tipo de material:

AL = alluminio idoneo al trattamento anodico.
aluminium suitable for the anodic oxidation.
Aluminium für die anodische Oxidation geeignet.
aluminium apte au traitement anodique.
aluminio apto para la oxidación anódica.

ST = acciaio - steel - Stahl - acier - acero



Se ancora in stock saranno consegnate barre del gruppo merceologico 17.

We will deliver bars of item group 17 until stocks are sold out.

Solang im Vorrat vorhanden werden die Zahnstangen der Produkt-Gruppe 17 geliefert.

Nous livrerons les barreaux de la famille 17 jusqu'à l'épuisement du stock.

Entregaremos las barras del grupo 17 hasta el agotamiento del stock.

AT 10

Passo - Pitch - Teilung - Pas - Paso 10 mm

| Codice Item number Codierung Code Código | Descrizione Designation Bezeichnung Désignation Referencia | N° denti N. of teeth Anzahl der Zähne Nombre de dents Cantidad de dientes | Dp mm | De mm | Lu mm | L mm |
|--|--|--|----------|----------|----------|---------|
| 77AT10014 | 14 AT10-200 AL | 14 | 44,56 | 42,70 | 200 | 210 |
| 77AT10014X | 14 AT10-200 ST | 14 | 44,56 | 42,70 | 200 | 210 |
| 77AT10015 | 15 AT10-200 AL | 15 | 47,75 | 45,90 | 200 | 200 |
| 77AT10015X | 15 AT10-200 ST | 15 | 47,75 | 45,90 | 200 | 200 |
| 77AT10016 | 16 AT10-200 AL | 16 | 50,93 | 49,05 | 200 | 200 |
| 77AT10016X | 16 AT10-200 ST | 16 | 50,93 | 49,05 | 200 | 200 |
| 77AT10017 | 17 AT10-200 AL | 17 | 54,11 | 52,25 | 200 | 200 |
| 77AT10017X | 17 AT10-200 ST | 17 | 54,11 | 52,25 | 200 | 200 |
| 77AT10018 | 18 AT10-200 AL | 18 | 57,30 | 55,45 | 200 | 200 |
| 77AT10018X | 18 AT10-200 ST | 18 | 57,30 | 55,45 | 200 | 200 |
| 77AT10019 | 19 AT10-200 AL | 19 | 60,48 | 58,60 | 200 | 200 |
| 77AT10019X | 19 AT10-200 ST | 19 | 60,48 | 58,60 | 200 | 200 |
| 77AT10020 | 20 AT10-200 AL | 20 | 63,66 | 61,80 | 200 | 200 |
| 77AT10020X | 20 AT10-200 ST | 20 | 63,66 | 61,80 | 200 | 200 |
| 77AT10021 | 21 AT10-200 AL | 21 | 66,85 | 65,00 | 200 | 200 |
| 77AT10021X | 21 AT10-200 ST | 21 | 66,85 | 65,00 | 200 | 200 |
| 77AT10022 | 22 AT10-200 AL | 22 | 70,03 | 68,15 | 200 | 200 |
| 77AT10022X | 22 AT10-200 ST | 22 | 70,03 | 68,15 | 200 | 200 |
| 77AT10023 | 23 AT10-200 AL | 23 | 73,21 | 71,35 | 200 | 200 |
| 77AT10023X | 23 AT10-200 ST | 23 | 73,21 | 71,35 | 200 | 200 |
| 77AT10024 | 24 AT10-200 AL | 24 | 76,39 | 74,55 | 200 | 200 |
| 77AT10024X | 24 AT10-200 ST | 24 | 76,39 | 74,55 | 200 | 200 |
| 77AT10025 | 25 AT10-200 AL | 25 | 79,58 | 77,70 | 200 | 200 |
| 77AT10025X | 25 AT10-200 ST | 25 | 79,58 | 77,70 | 200 | 200 |
| 77AT10026 | 26 AT10-200 AL | 26 | 82,76 | 80,90 | 200 | 200 |
| 77AT10026X | 26 AT10-200 ST | 26 | 82,76 | 80,90 | 200 | 200 |
| 77AT10027 | 27 AT10-200 AL | 27 | 85,94 | 84,10 | 200 | 200 |
| 77AT10027X | 27 AT10-200 ST | 27 | 85,94 | 84,10 | 200 | 200 |
| 77AT10028 | 28 AT10-200 AL | 28 | 89,13 | 87,25 | 200 | 200 |
| 77AT10028X | 28 AT10-200 ST | 28 | 89,13 | 87,25 | 200 | 200 |
| 77AT10029 | 29 AT10-200 AL | 29 | 92,31 | 90,47 | 200 | 200 |
| 77AT10029X | 29 AT10-200 ST | 29 | 92,31 | 90,47 | 200 | 200 |
| 77AT10030 | 30 AT10-200 AL | 30 | 95,49 | 93,65 | 200 | 200 |
| 77AT10030X | 30 AT10-200 ST | 30 | 95,49 | 93,65 | 200 | 200 |
| 77AT10031 | 31 AT10-200 AL | 31 | 98,68 | 96,80 | 200 | 200 |
| 77AT10031X | 31 AT10-200 ST | 31 | 98,68 | 96,80 | 200 | 200 |
| 77AT10032 | 32 AT10-200 AL | 32 | 101,86 | 100,00 | 200 | 200 |
| 77AT10032X | 32 AT10-200 ST | 32 | 101,86 | 100,00 | 200 | 200 |
| 77AT10033 | 33 AT10-200 AL | 33 | 105,04 | 103,20 | 200 | 200 |
| 77AT10033X | 33 AT10-200 ST | 33 | 105,04 | 103,20 | 200 | 200 |
| 77AT10034 | 34 AT10-200 AL | 34 | 108,23 | 106,40 | 200 | 200 |
| 77AT10034X | 34 AT10-200 ST | 34 | 108,23 | 106,40 | 200 | 200 |
| 77AT10035 | 35 AT10-200 AL | 35 | 111,41 | 109,55 | 200 | 200 |
| 77AT10035X | 35 AT10-200 ST | 35 | 111,41 | 109,55 | 200 | 200 |
| 77AT10036 | 36 AT10-200 AL | 36 | 114,59 | 112,75 | 200 | 200 |

| Codice Item number Codierung Code Código | Descrizione Designation Bezeichnung Désignation Referencia | N° denti N. of teeth Anzahl der Zähne Nombre de dents Cantidad de dientes | Dp mm | De mm | Lu mm | L mm |
|--|--|--|----------|----------|----------|---------|
| 77AT10036X | 36 AT10-200 ST | 36 | 114,59 | 112,75 | 200 | 200 |
| 77AT10037 | 37 AT10-200 AL | 37 | 117,77 | 115,90 | 200 | 200 |
| 77AT10037X | 37 AT10-200 ST | 37 | 117,77 | 115,90 | 200 | 200 |
| 77AT10038 | 38 AT10-200 AL | 38 | 120,96 | 119,10 | 200 | 200 |
| 77AT10038X | 38 AT10-200 ST | 38 | 120,96 | 119,10 | 200 | 200 |
| 77AT10040 | 40 AT10-200 AL | 40 | 127,32 | 125,45 | 200 | 200 |
| 77AT10040X | 40 AT10-200 ST | 40 | 127,32 | 125,45 | 200 | 200 |
| 77AT10041 | 41 AT10-200 AL | 41 | 130,51 | 128,65 | 200 | 200 |
| 77AT10041X | 41 AT10-200 ST | 41 | 130,51 | 128,65 | 200 | 200 |
| 77AT10042 | 42 AT10-200 AL | 42 | 133,69 | 131,85 | 200 | 200 |
| 77AT10042X | 42 AT10-200 ST | 42 | 133,69 | 131,85 | 200 | 200 |
| 77AT10044 | 44 AT10-200 AL | 44 | 140,06 | 138,20 | 200 | 200 |
| 77AT10044X | 44 AT10-200 ST | 44 | 140,06 | 138,20 | 200 | 200 |
| 77AT10045 | 45 AT10-200 AL | 45 | 143,24 | 141,40 | 200 | 200 |
| 77AT10045X | 45 AT10-200 ST | 45 | 143,24 | 141,40 | 200 | 200 |
| 77AT10046 | 46 AT10-200 AL | 46 | 146,42 | 144,55 | 200 | 200 |
| 77AT10046X | 46 AT10-200 ST | 46 | 146,42 | 144,55 | 200 | 200 |
| 77AT10048 | 48 AT10-200 AL | 48 | 152,79 | 150,95 | 200 | 200 |
| 77AT10048X | 48 AT10-200 ST | 48 | 152,79 | 150,95 | 200 | 200 |
| 77AT10050 | 50 AT10-200 AL | 50 | 159,15 | 157,30 | 200 | 200 |
| 77AT10050X | 50 AT10-200 ST | 50 | 159,15 | 157,30 | 200 | 200 |
| 77AT10051 | 51 AT10-200 AL | 51 | 162,34 | 160,50 | 200 | 200 |
| 77AT10051X | 51 AT10-200 ST | 51 | 162,34 | 160,50 | 200 | 200 |
| 77AT10052 | 52 AT10-200 AL | 52 | 165,52 | 163,65 | 200 | 200 |
| 77AT10052X | 52 AT10-200 ST | 52 | 165,52 | 163,65 | 200 | 200 |
| 77AT10054 | 54 AT10-200 AL | 54 | 171,89 | 170,05 | 200 | 200 |
| 77AT10054X | 54 AT10-200 ST | 54 | 171,89 | 170,05 | 200 | 200 |
| 77AT10055 | 55 AT10-200 AL | 55 | 175,07 | 173,20 | 200 | 200 |
| 77AT10055X | 55 AT10-200 ST | 55 | 175,07 | 173,20 | 200 | 200 |
| 77AT10056 | 56 AT10-200 AL | 56 | 178,25 | 176,40 | 200 | 200 |
| 77AT10056X | 56 AT10-200 ST | 56 | 178,25 | 176,40 | 200 | 200 |
| 77AT10057 | 57 AT10-200 AL | 57 | 181,44 | 179,60 | 200 | 200 |
| 77AT10057X | 57 AT10-200 ST | 57 | 181,44 | 179,60 | 200 | 200 |
| 77AT10058 | 58 AT10-200 AL | 58 | 184,62 | 182,75 | 200 | 200 |
| 77AT10058X | 58 AT10-200 ST | 58 | 184,62 | 182,75 | 200 | 200 |
| 77AT10059 | 59 AT10-200 AL | 59 | 187,80 | 185,95 | 200 | 200 |
| 77AT10059X | 59 AT10-200 ST | 59 | 187,80 | 185,95 | 200 | 200 |
| 77AT10060 | 60 AT10-200 AL | 60 | 190,99 | 189,10 | 200 | 200 |
| 77AT10060X | 60 AT10-200 ST | 60 | 190,99 | 189,10 | 200 | 200 |
| 77AT10062 | 62 AT10-200 AL | 62 | 197,35 | 195,50 | 200 | 200 |
| 77AT10062X | 62 AT10-200 ST | 62 | 197,35 | 195,50 | 200 | 200 |
| 77AT10070 | 70 AT10-200 AL | 70 | 222,82 | 220,95 | 200 | 200 |
| 77AT10070X | 70 AT10-200 ST | 70 | 222,82 | 220,95 | 200 | 200 |
| 77AT10075 | 75 AT10-200 AL | 75 | 238,73 | 236,90 | 200 | 200 |
| 77AT10075X | 75 AT10-200 ST | 75 | 238,73 | 236,90 | 200 | 200 |



Flange per pulegge dentate

Flanges for timing pulleys - Bordscheiben zur Riemenführung
Flasques pour poulies dentées - Guías para poleas dentadas

| Codice Item number Codierung Code Código | Flange Flanges Bord- scheiben Flasques Guías | | d = 0,5 | d = 1 | d = 1,5 | d = 1,5 | d = 2,5 | d = 2,5 | HTD® GT® RPP 3 mm | HTD® GT® RPP 5 mm | HTD® PCGT RPP 8 mm | HTD® PCGT RPP 14 mm | d = 0,5 | d = 1 | d = 1 | |
|--|---|------|---------|-------|---------|---------|---------|---------|----------------------------|----------------------------|-----------------------------|------------------------------|---------|-------|-------|-----|
| | | | | | | | | | | | | | | | | MXL |
| Numero di denti - Number of teeth - Anzahl der Zähne - Nombre de dents - Cantidad de dientes | | | | | | | | | | | | | | | | |
| 28..073 | B 73 | 6,0 | 10,0 | 13,0 | 12 | | | | 9 | | | | 12 | | | |
| | | | | | 13 | | | | 10 | | | | 13 | | | |
| | | | | | 14 | | | | 11 | | | | | | | |
| | | | | | 15 | | | | | | | | | | | |
| | | | | | 16 | | | | | | | | | | | |
| 28..074 | B 74 | 8,0 | 12,0 | 15,0 | 17 | | | | 12 | | | | 14 | | | |
| | | | | | 18 | | | | 13 | | | | 15 | | | |
| | | | | | 19 | | | | | | | | | | | |
| 28..075 | B 75 | 9,5 | 13,0 | 16,0 | 20 | | | | 14 | | | | 16 | | | |
| 28..076 | B 76 | 10,5 | 14,5 | 17,5 | 21 | | | | 15 | | | | 17 | | | |
| | | | | | 22 | | | | | | | | 18 | | | |
| 28..077 | B 77 | 11,5 | 15,0 | 18,0 | | | | | 16 | | | | 19 | | | |
| | | | | | 23 | | | | 17 | | | | 20 | 10 | | |
| 28..000 | B 0 | 12,0 | 17,5 | 19,5 | 24 | | | | 18 | | | | 21 | | | |
| | | | | | 25 | | | | 19 | | | | | | | |
| | | | | | 26 | 10 | | | | | | | 22 | 11 | | |
| 28..001 | B 1 | 12,0 | 17,5 | 23,0 | 27 | 11 | | | | | | | | 12 | | |
| | | | | | 28 | | | | | | | | | | | |
| | | | | | 29 | | | | | | | | | | | |
| 28..078 | B 78 | 14,0 | 20,0 | 23,0 | | | | | 20 | 12 | | | 23 | | | |
| | | | | | | | | | | | | | 24 | | | |
| | | | | | | | | | | | | | 25 | | | |
| | | | | | 30 | 12 | | | 21 | 13 | | | 26 | 13 | | |
| | | | | | 31 | 13 | | | 22 | 14 | | | 27 | 14 | | |
| 28..002 | B 2 | 15,0 | 22,0 | 25,0 | 32 | | | | 23 | | | | 28 | | | |
| | | | | | 33 | | | | 24 | | | | | | | |
| | | | | | 34 | | | | | | | | | | | |
| | | | | | 35 | | | | | | | | | | | |
| | | | | | 36 | 14 | | | 25 | 15 | | | 29 | 15 | | |
| 28..003 | B 3 | 18,0 | 24,0 | 28,0 | 37 | 15 | | | 26 | 16 | | | 30 | | | |
| | | | | | 38 | | | | | | | | | | | |
| | | | | | 39 | 16 | | | 27 | 17 | | | 31 | 16 | | |
| | | | | | 40 | 17 | | | 28 | 18 | | | 32 | 17 | | |
| | | | | | 41 | | | | 29 | | | | 33 | 18 | | |
| | | | | | 42 | | | | 30 | | | | 34 | | | |
| | | | | | 43 | | | | | | | | 35 | | | |
| | | | | | 44 | | | | | | | | | | | |
| 28..097 | B 97 | 22,4 | 29,5 | 35,0 | | | | | | 19* | | | | | | |
| | | | | | 45 | 18 | 10 | | 31 | 20 | | | 36 | 19 | | |
| 28..005 | B 5 | 25,0 | 31,0 | 36,0 | 46 | 19 | | | 32 | | | | 37 | 20 | | |
| | | | | | 47 | | | | 33 | | | | 38 | | | |
| | | | | | 48 | | | | | | | | 39 | | | |
| | | | | | 49 | 20 | 11 | | 34 | 21 | | | 40 | 21 | | |
| | | | | | 50 | 21 | | | 35 | 22 | | | 41 | 22 | | |
| | | | | | 51 | | | | 36 | | | | 42 | | | |
| | | | | | 52 | | | | | | | | 43 | | | |
| | | | | | 53 | | | | | | | | | | | |
| 28..082 | B 82 | 28,0 | 38,0 | 42,0 | | | | | | | 15* | | | | | |
| | | | | | 54 | 22 | 12 | | 37 | 23 | | | 44 | 23 | 12 | |
| | | | | | 55 | 23 | | | 38 | 24 | | | 45 | 24 | | |
| | | | | | 56 | | | | 39 | | | | 46 | | | |
| | | | | | 57 | | | | 40 | | | | 47 | | | |
| | | | | | 58 | | | | | | | | 48 | | | |
| | | | | | 59 | | | | | | | | | | | |
| 28..083 | B 83 | 30,0 | 40,0 | 44,0 | | | | | | | 16* | | | | | |
| | | | | | 60* | 24 | 13 | | 41* | 25 | | | 49* | 25 | | 13 |
| | | | | | 61* | | | | 42* | 26 | | | 50* | 26 | | |
| | | | | | 62* | | | | | | | | | | | |
| | | | | | 63* | | | | | | | | | | | |

* A richiesta, per informazioni consultare il NS/UFF. COMMERCIALE.
Sostituire .. con spessore in decimi e aggiungere Z se zincate. Esempio:
28..063 spessore 1 mm zincata = 2810063Z
28..063 spessore 1 mm normale = 2810063

*On request, please consult us. Replace .. with thickness in tenths and add Z if zinc-plated. Example:
28..063 thickness 1 mm zinc-plated = 2810063Z
28..063 thickness 1 mm basic = 2810063

* Diese können auf Wunsch geliefert werden, bitte nachfragen. .. mit der Dicke in Zehntel ersetzen und, falls verzinkt, Z hinzufügen. Beispiel:
28..063 Dicke 1 mm verzinkt = 2810063Z
28..063 Dicke 1 mm einfach = 2810063

* Sur demande, veuillez nous consulter. Remplacer .. par l'épaisseur en dixièmes et ajouter Z si zingués. Par exemple:
28..063 épaisseur 1 mm zingué = 2810063Z
28..063 épaisseur 1 mm normale = 2810063.

* Bajo consulta, rogamos consulten. Reemplazar .. por el espesor en décimos y añadir Z si las valonas son cincadas. Por ejemplo:
28..063 espesor 1 mm cincada = 2810063Z
28..063 espesor 1 mm normal = 2810063



Flange per pulegge dentate

Flanges for timing pulleys - Bordscheiben zur Riemenführung
Flasques pour poulies dentées - Guías para poleas dentadas

| Codice Item number Codierung Code Código | Flange Flanges Bord- scheiben Flasques Guías | | | | d = 0,5 | d = 1 | d = 1,5 | d = 1,5 | d = 2,5 | d = 2,5 | d = 0,5 | d = 1 | d = 1,5 | d = 2,5 | d = 0,5 | d = 1 | d = 1 |
|--|---|------|------|------|--|-------------------|----------|---------|---------|---------|---------------------------------|----------------------------|-----------------------------|------------------------------|---|-------------------|---------------|
| | | | | | MXL | XL | L | H | XH | XXH | HTD® GT® RPP 3 mm | HTD® GT® RPP 5 mm | HTD® PCGT RPP 8 mm | HTD® PCGT RPP 14 mm | T 2,5 | T 5 AT 5 | T 10 AT 10 |
| Numero di denti - Number of teeth - Anzahl der Zähne - Nombre de dents - Cantidad de dientes | | | | | | | | | | | | | | | | | |
| 28..009 | B 9 | 37,0 | 43,5 | 48,0 | 64 65 66 67 68 | 25 26 27 | 14 | | | | 43 44 45 46 | 27 28 | | | 51 52 53 54 55 | 27 28 | 14 |
| 28..098 | B 98 | 33,3 | 42,0 | 49,0 | | | | | | | | | 17* | | | | |
| 28..096 | B 96 | 36,0 | 45,0 | 49,0 | | | | | | | | | 18* | | | | |
| 28..084 | B 84 | 38,0 | 47,5 | 51,0 | | | | | | | | | 19* | | | | |
| 28..010 | B 10 | 40,0 | 47,5 | 51,0 | 69* 70* 71* 72* 73* 74* | 28 29 | 15 | | | | 47* 48* 49* 50* | 29 30 | | | 56* 57* 58* 59* 60* | 29 30 | 15 |
| 28..085 | B 85 | 41,0 | 50,5 | 54,0 | | | | | | | | | 20* | | | | |
| 28..011 | B 11 | 43,0 | 50,5 | 54,0 | 75* 76* 77* 78* | 30 31 | 16 | | | | 51* 52* 53* | 31 32 | | | 61* 62* 63* 64* | 31 32 | 16 |
| 28..012 | B 12 | 46,0 | 53,0 | 57,0 | 79* 80* 81* 82* 83* | 32 33 | 17 | | | | 54* 55* 56* | 33 34 | | | 65* 66* 67* | 33 34 | 17 |
| 28..099 | B 99 | 44,5 | 55,5 | 62,0 | | | | | | | | | 21* | | | | |
| 28..013 | B 13 | 47,0 | 57,0 | 60,0 | 84* 85* 86* 87* 88* | 34 | 18 19 | | | | 57* 58* | 35 36 | 22 | | 68* 69* 70* 71* 72* | 35 | 18 |
| 28..014 | B 14 | 48,0 | 57,0 | 63,0 | 89* 90* | 35 | | 14 | | | 59* 60* | | 23 | | | 36 37 | |
| 28..015 | B 15 | 52,0 | 61,5 | 66,0 | 91* 92* 93* 94* 95* 96* | 36 37 | 20 | 15 | | | 61* 62* 63* 64* 65* | 37 38 39 | 24 | | 73* 74 75 76 77 | 38 39 40 | 19 20 |
| 28..103 | B 103 | 50,8 | 63,7 | 70,0 | | | | | | | | | 25 | | 78* 79* 80* | | |
| 28..016 | B 16 | 56,0 | 65,0 | 71,0 | 97* 98* 99* 100* 101* | 38 39 40 | 21 | 16 | | | 66* 67* 68* 69* | 40 41 | 26 | | 81* 82* | 41 42 | 21 |
| 28..017 | B 17 | 60,0 | 68,5 | 75,0 | 102* 103* 104* 105* 106* | 41 42 | 22 | 17 | | | 70* 71* 72* | 42 43 44 | 27 28 | | 83* 84* 85* 86* | 43 44 | 22 |
| 28..018 | B 18 | 64,0 | 73,5 | 79,0 | 107* 108* 109* 110* | 43* 44* 45* | 23 24 | 18 | | | | 45* 46* 47* | 29 | | 87* 88* 89* 90* 91* 92* 93* | 45* 46* 47* | 23* |
| 28..104 | B 104 | 63,5 | 75,8 | 86,0 | | | | | | | | | | | 94* 95* | | |

* A richiesta, per informazioni consultare il NS/UFF. COMMERCIALE.
Sostituire .. con spessore in decimi e aggiungere Z se zincate. Esempio:
28..063 spessore 1 mm zincata = 2810063Z
28..063 spessore 1 mm normale = 2810063

*On request, please consult us. Replace .. with thickness in tenths and add Z if zinc-plated. Example:
28..063 thickness 1 mm zinc-plated = 2810063Z
28..063 thickness 1 mm basic = 2810063

* Diese können auf Wunsch geliefert werden, bitte nachfragen. .. mit der Dicke in Zehntel ersetzen und, falls verzinkt, Z hinzufügen. Beispiel:
28..063 Dicke 1 mm verzinkt = 2810063Z
28..063 Dicke 1 mm einfach = 2810063

* Sur demande, veuillez nous consulter. Remplacer .. par l'épaisseur en dixièmes et ajouter Z si zingués. Par exemple:
28..063 épaisseur 1 mm zingué = 2810063Z
28..063 épaisseur 1 mm normale = 2810063.

* Bajo consulta, rogamos consultar. Reemplazar .. por el espesor en décimos y añadir Z si las valonas son cincadas. Por ejemplo:
28..063 espesor 1 mm cincada = 2810063Z
28..063 espesor 1 mm normal = 2810063



Flange per pulegge dentate

Flanges for timing pulleys - Bordscheiben zur Riemenführung
Flasques pour poulies dentées - Guías para poleas dentadas

| Codice Item number Codierung Code Código | Flange Flanges Bord- scheiben Flasques Guías | | | | d = 0,5 | d = 1 | d = 1,5 | d = 1,5 | d = 2,5 | d = 2,5 | d = 0,5 | d = 1 | d = 1,5 | d = 2,5 | d = 0,5 | d = 1 | d = 1 | |
|--|---|-------|-------|-------|---------|--------------------------|----------|---------|---------|---------|----------------------------|----------------------------|-----------------------------|------------------------------|----------|---------------------------|----------------------|------------|
| | | | | | MXL | XL | L | H | XH | XXH | HTD® GT® RPP 3 mm | HTD® GT® RPP 5 mm | HTD® PCGT RPP 8 mm | HTD® PCGT RPP 14 mm | T 2,5 | T 5 AT 5 | T 10 AT 10 | |
| Numero di denti - Number of teeth - Anzahl der Zähne - Nombre de dents - Cantidad de dientes | | | | | | | | | | | | | | | | | | |
| 28..019 | B 19 | 68,0 | 76,5 | 83,0 | | 46 47 | 25 | 19 | | | | 48 49 | 30 | | | 96* | 48 49 | 24 25 |
| 28..105 | B 105 | 66,6 | 79,8 | 86,0 | | | | | | | | | 31* | | | 97* 98* 99* 100* | | |
| 28..020 | B 20 | 72,0 | 82,5 | 87,0 | | 48 49 50 51 | 26 27 | 20 | | | | 50 51 52 | 32 33 | | | | 50 51 52 | 26 |
| 28..021 | B 21 | 76,0 | 85,5 | 91,0 | | 52 53 | 28 | 21 | | | | 53 54 | 34 | | | | 53 54 | 27 |
| 28..022 | B 22 | 80,0 | 89,0 | 93,0 | | 54 55 | 29 | 22 | | | | 55 56 | 35 | | | | 55 56 | 28 |
| 28..106 | B 106 | 79,3 | 92,0 | 98,5 | | | | | | | | | 36 | | | | | |
| 28..023 | B 23 | 83,0 | 93,0 | 97,0 | | 56 57 58 | 30 | 23 | | | | 57 58 59 | 37 | | | | 57 58 59 | 29 30 |
| 28..024 | B 24 | 86,0 | 97,0 | 103,0 | | 59* 60* | 31 32 | 24 | | | | 60* 61* | 38 | | | | 60* 61* | 31* |
| 28..025 | B 25 | 90,0 | 101,0 | 106,0 | | 61 62 | 33 | 25 | | | | 62 63 64 | 39 40 | | | | 62 63 64 | 32 |
| 28..090 | B 90 | 90,0 | 106,0 | 111,0 | | | | | | | | 65* 66* | | | | | | |
| 28..026 | B 26 | 94,0 | 106,0 | 111,0 | | 63* | 34 35 | 26 | | | | 67* | 41 42 | | | | 65* 66* 67* | 33* |
| 28..091 | B 91 | 94,0 | 110,0 | 115,0 | | | | | | | | 68* 69* | | | | | | |
| 28..027 | B 27 | 99,0 | 110,0 | 115,0 | | 64* 65* 66* 67* | 36 | 27 | | | | 70* | 43 | | | | 68* 69* | 34* 35* |
| 28..092 | B 92 | 99,0 | 113,5 | 119,0 | | | | | | | | 71* 72 | 44 45 | | | | 70 71 72 73 | 36 |
| 28..028 | B 28 | 103,0 | 113,5 | 119,0 | | | 37 | 28 | | | | 72 | 44 45 | | | | 70 71 72 73 | 36 |
| 28..029 | B 29 | 107,0 | 117,5 | 123,0 | | 69* 70* 71* 72* | 38 | 29 | | | | 73* 74* | 46 | | | | 74* 75* 76* | 37* |
| 28..108 | B 108 | 104,5 | 120,2 | 127,0 | | | | | | | | | 47* | | | | | |
| 28..120 | B 120 | 109,5 | 120,2 | 127,0 | | | | | | | | | 28 | | | | | |
| 28..030 | B 30 | 111,0 | 122,0 | 127,0 | | | 39 40 | 30 | | | | 75* | 48 | | | | 77* 78* | 38* 39* |
| 28..031 | B 31 | 115,0 | 125,5 | 131,0 | | | 41 | 31 | | | | | 49 50 51 | | | | 79 80 | 40 |
| 28..032 | B 32 | 119,0 | 130,0 | 135,0 | | | 42 43 | 32 | | | | | 51 | | | | 81* 82* 83* | 41* |
| 28..121 | B 121 | 110,0 | 130,0 | 138,0 | | | | | 18 | | | | | | 29 30 | | | |
| 28..033 | B 33 | 123,0 | 134,5 | 140,0 | | | 44 | 33 | | | | | 52 53 | | | | 84* 85* 86* | 42* |
| 28..034 | B 34 | 127,0 | 139,0 | 143,0 | | | 45 | 34 | | | | | 54 55 | | | | 87* 88* | 43* 44* |
| 28..044 | B 44 | 116,0 | 138,0 | 146,0 | | | | | 19* | | | | | | 31* | | | |

* A richiesta, per informazioni consultare il NS/UFF. COMMERCIALE.
Sostituire .. con spessore in decimi e aggiungere Z se zincate. Esempio:
28..063 spessore 1 mm zincata = 2810063Z
28..063 spessore 1 mm normale = 2810063

*On request, please consult us. Replace .. with thickness in tenths and add Z if zinc-plated. Example:
28..063 thickness 1 mm zinc-plated = 2810063Z
28..063 thickness 1 mm basic = 2810063

* Diese können auf Wunsch geliefert werden, bitte nachfragen. .. mit der Dicke in Zehntel ersetzen und, falls verzinkt, Z hinzufügen. Beispiel:
28..063 Dicke 1 mm verzinkt = 2810063Z
28..063 Dicke 1 mm einfach = 2810063

* Sur demande, veuillez nous consulter. Remplacer .. par l'épaisseur en dixièmes et ajouter Z si zingués. Par exemple:
28..063 épaisseur 1 mm zingué = 2810063Z
28..063 épaisseur 1 mm normale = 2810063.

* Bajo consulta, rogamos consulten. Reemplazar .. por el espesor en décimos y añadir Z si las valonas son cincadas. Por ejemplo:
28..063 espesor 1 mm cincada = 2810063Z
28..063 espesor 1 mm normal = 2810063



Flange per pulegge dentate

Flanges for timing pulleys - Bordscheiben zur Riemenführung
Flasques pour poulies dentées - Guías para poleas dentadas

| Codice Item number Codierung Code Código | Flange Flanges Bord- scheiben Flasques Guías | | | | d = 0,5 | d = 1 | d = 1,5 | d = 1,5 | d = 2,5 | d = 2,5 | d = 0,5 | d = 1 | d = 1,5 | d = 2,5 | d = 0,5 | d = 1 | d = 1 | |
|---|---|-------|-------|-------|--|-------|----------------|-------------------|-------------------|---------|----------------------------|----------------------------|-----------------------------|------------------------------|-------------------|-------------|--------------------------|---------------------------------|
| | | | | | MXL | XL | L | H | XH | XXH | HTD® GT® RPP 3 mm | HTD® GT® RPP 5 mm | HTD® PCGT RPP 8 mm | HTD® PCGT RPP 14 mm | T 2,5 | T 5 AT 5 | T 10 AT 10 | |
| | | | | | Numero di denti - Number of teeth - Anzahl der Zähne - Nombre de dents - Cantidad de dientes | | | | | | | | | | | | | |
| 28..035 | B 35 | 132,0 | 143,0 | 148,0 | | | 46 47 | 35 | | | | | | 56 | | | 89* 90* | 45* |
| 28..036 | B 36 | 136,0 | 147,5 | 152,0 | | | 48 | 36 | | | | | | 57 58 | | | 91* 92* 93* | 46* 47* |
| 28..045 | B 45 | 122,0 | 146,0 | 154,0 | | | | | 20 | | | | | | 32 | | | |
| 28..046 | B 46 | 128,0 | 150,0 | 160,0 | | | | | 21 | | | | | 59* | 33 34 | | | |
| 28..037 | B 37 | 142,0 | 154,0 | 158,0 | | | 49 50 51 | 37 38 | | | | | | 60 | | | 94* 95* 96* 97* | 48* 49* |
| 28..047 | B 47 | 135,0 | 162,0 | 168,0 | | | | | 22 | | | | | 61* 62* | 35 36 | | | |
| 28..038 | B 38 | 149,5 | 163,0 | 168,0 | | | 52 53 54 | 39 40 | | | | | | 63 64 | | | 98* 99* 100* | 50* 51* 52* |
| 28..048 | B 48 | 144,0 | 166,0 | 174,0 | | | | | 23* | | | | | 65* | 37* | | | |
| 28..039 | B 39 | 157,0 | 170,0 | 175,0 | | | 55 56 | 41 42 | | | | | | 66 67 | | | | 53* 54* |
| 28..049 | B 49 | 145,0 | 170,0 | 183,0 | | | | | 24 | | | | | | 38 39 | | | |
| 28..040 | B 40 | 165,0 | 179,0 | 184,0 | | | 57 58 59 | 43 44 | | | | | | 69 70 | | | | 55* 56* |
| 28..050 | B 50 | 158,0 | 180,0 | 188,0 | | | | | 25 | | | | | 68* 71* | 40 41 | | | |
| 28..041 | B 41 | 173,0 | 187,0 | 192,0 | | | 60 | 45 46 | | | | | | 72 73 | | | | 57* 58* 59* |
| 28..052 | B 52 | 155,0 | 185,0 | 197,0 | | | | | | 18* | | | | | | | | |
| 28..051 | B 51 | 165,0 | 188,0 | 198,0 | | | | | 26* | | | | | | 42* | | | |
| 28..053 | B 53 | 172,0 | 192,8 | 200,0 | | | | | 27* | | | | | | 43* | | | |
| 28..042 | B 42 | 181,0 | 195,0 | 200,0 | | | | 47 48 | | | | | | 75 | | | | 60* 61* |
| 28..054 | B 54 | 164,0 | 196,0 | 205,0 | | | | | | 19* | | | | | | | | 62* |
| 28..055 | B 55 | 175,0 | 198,0 | 211,0 | | | | 49* | 28 | 20 | | | | | 44 45 | | | |
| 28..056 | B 56 | 186,0 | 208,0 | 216,0 | | | | 50* 51* | 29* | | | | | | 46* | | | 63* 64* 65* 66* 67* |
| 28..057 | B 57 | 190,0 | 214,0 | 226,0 | | | | 52* 53* | 30 | 21 | | | | | 47 48 | | | |
| 28..058 | B 58 | 200,0 | 222,0 | 230,0 | | | | 54* 55* | 31* | | | | | | 49 50 | | | 68* 69* 70* |
| 28..060 | B 60 | 195,0 | 228,0 | 240,0 | | | | | | 22* | | | | | | | | |
| 28..059 | B 59 | 208,0 | 230,0 | 240,0 | | | 72* | 56* 57* 58* | 32 33 | 23 | | | | | 51 52 | | | 71* 72* |
| 28..062 | B 62 | 208,0 | 246,0 | 256,0 | | | | | 34* | 24* | | | | | | | | |
| 28..061 | B 61 | 225,0 | 246,0 | 256,0 | | | | 59* 60* | 35 | 25 | | | | | 55 56 | | | |
| 28..066 | B 66 | 235,0 | 261,0 | 278,0 | | | | | | 26* | | | | | 58* 59* | | | |
| 28..063 | B 63 | 242,0 | 277,0 | 286,0 | | | | 64* 66* | 37* 38* 39* | 27* | | | | | 60* 61* 62* | | | |
| 28..064 | B 64 | 252,0 | 287,0 | 296,0 | | | | | 40 | 28 | | | | | 63 64 | | | |

* A richiesta, per informazioni consultare il NS/UFF. COMMERCIALE.
Sostituire .. con spessore in decimi e aggiungere Z se zincate. Esempio:
28..063 spessore 1 mm zincata = 2810063Z
28..063 spessore 1 mm normale = 2810063

*On request, please consult us. Replace .. with thickness in tenths and add Z if zinc-plated. Example:
28..063 thickness 1 mm zinc-plated = 2810063Z
28..063 thickness 1 mm basic = 2810063

* Diese können auf Wunsch geliefert werden, bitte nachfragen. .. mit der Dicke in Zehntel ersetzen und, falls verzinkt, Z hinzufügen. Beispiel:
28..063 Dicke 1 mm verzinkt = 2810063Z
28..063 Dicke 1 mm einfach = 2810063

* Sur demande, veuillez nous consulter. Remplacer .. par l'épaisseur en dixièmes et ajouter Z si zingués. Par exemple:
28..063 épaisseur 1 mm zingué = 2810063Z
28..063 épaisseur 1 mm normale = 2810063.

* Bajo consulta, rogamos consulten. Reemplazar .. por el espesor en décimos y añadir Z si las valonas son cincadas. Por ejemplo:
28..063 espesor 1 mm cincada = 2810063Z
28..063 espesor 1 mm normal = 2810063