



Pulegge dentate P-drive® monoblocco

Monobloc P-drive® timing pulleys

Monoblock P-drive® Zahnriemenscheiben

Poulies dentées P-drive® moyeu plein

Poleas dentadas P-drive® macizas





Pulegge dentate P-drive® monoblocco

Monobloc P-drive® timing pulleys

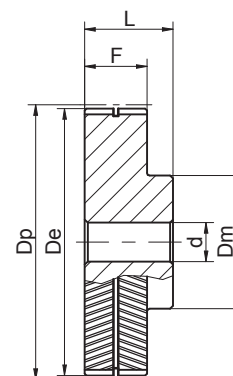
Monoblock P-drive® Zahnriemenscheiben

Poulies dentées P-drive® moyeu plein

Poleas dentadas P-drive® macizas

PD 5 12,5 Passo - Pitch - Teilung - Pas - Paso 5 mm

Materiale Material Werkstoff Matériel Material	Codice Item number Codierung Code Código	Descrizione Designation Bezeichnung Désignation Referencia	N° denti No. of teeth Anzahl der Zähne Nombre de dents Cantidad de dientes	Dp mm	De mm	Dm mm	F mm	L mm	d mm
Acciaio - Steel - Stahl - Acier - Acero	72H015012	15 PD 5 12,5-6 *	15	23,87	22,91	17,0	13,5	19,5	-
	72H016012	16 PD 5 12,5-6 *	16	25,46	24,50	19,0	13,5	19,5	-
	72H018012	18 PD 5 12,5-6 *	18	28,65	27,69	22,0	13,5	19,5	-
	72H019012	19 PD 5 12,5-6 *	19	30,24	29,28	24,0	13,5	21,5	-
	72H020012	20 PD 5 12,5-6 *	20	31,83	30,87	25,0	13,5	21,5	-
	72H021012	21 PD 5 12,5-6 *	21	33,42	32,46	26,0	13,5	21,5	-
	72H022012	22 PD 5 12,5-6 *	22	35,01	34,05	28,0	13,5	21,5	-
	72H024012	24 PD 5 12,5-6 *	24	38,20	37,24	32,0	13,5	21,5	-
	72H025012	25 PD 5 12,5-6 *	25	39,79	38,83	33,0	13,5	21,5	-
	72H026012	26 PD 5 12,5-6 *	26	41,38	40,42	35,0	13,5	21,5	-
	72H027012	27 PD 5 12,5-6 *	27	42,97	42,01	36,0	13,5	21,5	-
	72H028012	28 PD 5 12,5-6 *	28	44,56	43,60	38,0	13,5	21,5	-
	72H030012	30 PD 5 12,5-6 *	30	47,75	46,79	41,0	13,5	21,5	-
	72H032012	32 PD 5 12,5-6 *	32	50,93	49,97	44,0	13,5	21,5	-
	72H036012	36 PD 5 12,5-6 *	36	57,30	56,34	51,0	13,5	21,5	-
	72H040012	40 PD 5 12,5-6 *	40	63,66	62,70	57,0	13,5	24,5	-
	72H044012	44 PD 5 12,5-6 *	44	70,03	69,07	63,0	13,5	24,5	-
	72H048012	48 PD 5 12,5-6 *	48	76,39	75,43	70,0	13,5	24,5	-
	72H060012	60 PD 5 12,5-6 *	60	95,49	94,53	89,0	13,5	24,5	15
	72H072012	72 PD 5 12,5-6 *	72	114,59	113,63	108,0	13,5	24,5	15



6

PD 5 25 Passo - Pitch - Teilung - Pas - Paso 5 mm

Materiale Material Werkstoff Matériel Material	Codice Item number Codierung Code Código	Descrizione Designation Bezeichnung Désignation Referencia	N° denti No. of teeth Anzahl der Zähne Nombre de dents Cantidad de dientes	Dp mm	De mm	Dm mm	F mm	L mm	d mm
Acciaio - Steel - Stahl - Acier - Acero	72H015025	15 PD 5 25-6 *	15	23,87	22,91	17,0	26,0	32,0	-
	72H016025	16 PD 5 25-6 *	16	25,46	24,50	19,0	26,0	32,0	-
	72H018025	18 PD 5 25-6 *	18	28,65	27,69	22,0	26,0	32,0	-
	72H019025	19 PD 5 25-6 *	19	30,24	29,28	24,0	26,0	34,0	-
	72H020025	20 PD 5 25-6 *	20	31,83	30,87	25,0	26,0	34,0	-
	72H021025	21 PD 5 25-6 *	21	33,42	32,46	26,0	26,0	34,0	-
	72H022025	22 PD 5 25-6 *	22	35,01	34,05	28,0	26,0	34,0	-
	72H024025	24 PD 5 25-6 *	24	38,20	37,24	32,0	26,0	34,0	-
	72H025025	25 PD 5 25-6 *	25	39,79	38,83	33,0	26,0	34,0	-
	72H026025	26 PD 5 25-6 *	26	41,38	40,42	35,0	26,0	34,0	-
	72H027025	27 PD 5 25-6 *	27	42,97	42,01	36,0	26,0	34,0	-
	72H028025	28 PD 5 25-6 *	28	44,56	43,60	38,0	26,0	34,0	-
	72H030025	30 PD 5 25-6 *	30	47,75	46,79	41,0	26,0	34,0	-
	72H032025	32 PD 5 25-6 *	32	50,93	49,97	44,0	26,0	34,0	-
	72H036025	36 PD 5 25-6 *	36	57,30	56,34	51,0	26,0	34,0	-
	72H040025	40 PD 5 25-6 *	40	63,66	62,70	57,0	26,0	37,0	-
	72H044025	44 PD 5 25-6 *	44	70,03	69,07	63,0	26,0	37,0	-
	72H048025	48 PD 5 25-6 *	48	76,39	75,43	70,0	26,0	37,0	-
	72H060025	60 PD 5 25-6 *	60	95,49	94,53	89,0	26,0	37,0	15
	72H072025	72 PD 5 25-6 *	72	114,59	113,63	108,0	26,0	37,0	15

* A richiesta - On request - Auf Anfrage - Sur demande - Bajo consulta.



Pulegge dentate P-drive® monoblocco

Monobloc P-drive® timing pulleys

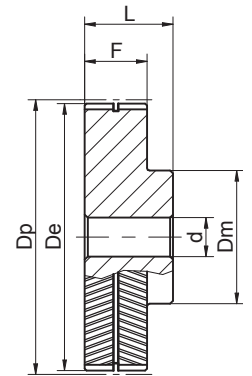
Monoblock P-drive® Zahnriemenscheiben

Poulies dentées P-drive® moyeu plein

Poleas dentadas P-drive® macizas

PD 8 16 Passo - Pitch - Teilung - Pas - Paso 8 mm

Materiale Material Werkstoff Matériel Material	Codice Item number Codierung Code Código	Descrizione Designation Bezeichnung Désignation Referencia	N° denti No. of teeth Anzahl der Zähne Nombre de dents Cantidad de dientes	Dp mm	De mm	Dm mm	F mm	L mm	d mm
Acciaio - Steel - Stahl - Acier - Acero	72N018016	18 PD 8 16-6 *	18	45,84	44,46	38,0	17,0	27,0	-
	72N020016	20 PD 8 16-6 *	20	50,93	49,56	41,0	17,0	29,0	-
	72N022016	22 PD 8 16-6 *	22	56,02	54,66	46,0	17,0	29,0	-
	72N024016	24 PD 8 16-6 *	24	61,12	59,74	51,0	17,0	33,0	-
	72N025016	25 PD 8 16-6 *	25	63,66	62,29	54,0	17,0	33,0	-
	72N026016	26 PD 8 16-6 *	26	66,21	64,84	58,0	17,0	33,0	-
	72N028016	28 PD 8 16-6 *	28	71,30	69,93	62,0	17,0	33,0	-
	72N030016	30 PD 8 16-6 *	30	76,39	75,02	67,0	17,0	33,0	-
	72N032016	32 PD 8 16-6 *	32	81,49	80,12	72,0	17,0	33,0	15
	72N034016	34 PD 8 16-6 *	34	86,58	85,21	77,0	17,0	33,0	15
	72N036016	36 PD 8 16-6 *	36	91,67	90,30	82,0	17,0	33,0	15
	72N038016	38 PD 8 16-6 *	38	96,77	95,39	87,0	17,0	33,0	15
	72N040016	40 PD 8 16-6 *	40	101,86	100,49	92,0	17,0	33,0	15
	72N044016	44 PD 8 16-6 *	44	112,05	110,67	102,0	17,0	33,0	15
	72N045016	45 PD 8 16-6 *	45	114,59	113,22	105,0	17,0	33,0	15
	72N048016	48 PD 8 16-6 *	48	122,23	120,86	112,0	17,0	33,0	15
	72N050016	50 PD 8 16-6 *	50	127,32	125,95	118,0	17,0	33,0	15
	72N052016	52 PD 8 16-6 *	52	132,42	131,04	123,0	17,0	33,0	15
	72N056016	56 PD 8 16-6 *	56	142,60	141,23	133,0	17,0	33,0	15
	72N060016	60 PD 8 16-6 *	60	152,79	151,42	143,0	17,0	33,0	15



6

PD 8 25 Passo - Pitch - Teilung - Pas - Paso 8 mm

Materiale Material Werkstoff Matériel Material	Codice Item number Codierung Code Código	Descrizione Designation Bezeichnung Désignation Referencia	N° denti No. of teeth Anzahl der Zähne Nombre de dents Cantidad de dientes	Dp mm	De mm	Dm mm	F mm	L mm	d mm
Acciaio - Steel - Stahl - Acier - Acero	72N018025	18 PD 8 25-6 *	18	45,84	44,46	38,0	26,0	38,0	-
	72N020025	20 PD 8 25-6 *	20	50,93	49,56	41,0	26,0	38,0	-
	72N022025	22 PD 8 25-6 *	22	56,02	54,66	46,0	26,0	38,0	-
	72N024025	24 PD 8 25-6 *	24	61,12	59,74	51,0	26,0	42,0	-
	72N025025	25 PD 8 25-6 *	25	63,66	62,29	54,0	26,0	42,0	-
	72N026025	26 PD 8 25-6 *	26	66,21	64,84	58,0	26,0	42,0	-
	72N028025	28 PD 8 25-6 *	28	71,30	69,93	62,0	26,0	42,0	-
	72N030025	30 PD 8 25-6 *	30	76,39	75,02	67,0	26,0	42,0	-
	72N032025	32 PD 8 25-6 *	32	81,49	80,12	72,0	26,0	42,0	15
	72N034025	34 PD 8 25-6 *	34	86,58	85,21	77,0	26,0	42,0	15
	72N036025	36 PD 8 25-6 *	36	91,67	90,30	82,0	26,0	42,0	15
	72N038025	38 PD 8 25-6 *	38	96,77	95,39	87,0	26,0	42,0	15
	72N040025	40 PD 8 25-6 *	40	101,86	100,49	92,0	26,0	42,0	15
	72N044025	44 PD 8 25-6 *	44	112,05	110,67	102,0	26,0	42,0	15
	72N045025	45 PD 8 25-6 *	45	114,59	113,22	105,0	26,0	42,0	15
	72N048025	48 PD 8 25-6 *	48	122,23	120,86	112,0	26,0	42,0	15
	72N050025	50 PD 8 25-6 *	50	127,32	125,95	118,0	26,0	42,0	15
	72N052025	52 PD 8 25-6 *	52	132,42	131,04	123,0	26,0	42,0	15
	72N056025	56 PD 8 25-6 *	56	142,60	141,23	133,0	26,0	42,0	15
	72N060025	60 PD 8 25-6 *	60	152,79	151,42	143,0	26,0	42,0	15

* A richiesta - On request - Auf Anfrage - Sur demande - Bajo consulta.



Pulegge dentate P-drive® monoblocco

Monobloc P-drive® timing pulleys

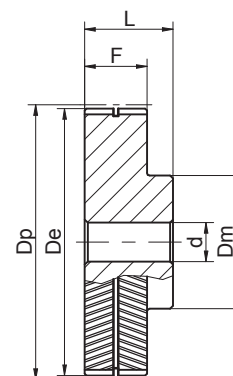
Monoblock P-drive® Zahnriemenscheiben

Poulies dentées P-drive® moyeu plein

Poleas dentadas P-drive® macizas

PD 8 32 Passo - Pitch - Teilung - Pas - Paso 8 mm

Materiale Material Werkstoff Matériel Material	Codice Item number Codierung Code Código	Descrizione Designation Bezeichnung Désignation Referencia	N° denti No. of teeth Anzahl der Zähne Nombre de dents Cantidad de dientes	Dp mm	De mm	Dm mm	F mm	L mm	d mm
Acciaio - Steel - Stahl - Acier - Acero	72N018032	18 PD 8 32-6 *	18	45,84	44,46	38,0	33,0	43,0	-
	72N020032	20 PD 8 32-6 *	20	50,93	49,56	41,0	33,0	45,0	-
	72N022032	22 PD 8 32-6 *	22	56,02	54,66	46,0	33,0	45,0	-
	72N024032	24 PD 8 32-6 *	24	61,12	59,74	51,0	33,0	49,0	-
	72N025032	25 PD 8 32-6 *	25	63,66	62,29	54,0	33,0	49,0	-
	72N026032	26 PD 8 32-6 *	26	66,21	64,84	58,0	33,0	49,0	-
	72N028032	28 PD 8 32-6 *	28	71,30	69,93	62,0	33,0	49,0	-
	72N030032	30 PD 8 32-6 *	30	76,39	75,02	67,0	33,0	49,0	-
	72N032032	32 PD 8 32-6 *	32	81,49	80,12	72,0	33,0	49,0	15
	72N034032	34 PD 8 32-6 *	34	86,58	85,21	77,0	33,0	49,0	15
	72N036032	36 PD 8 32-6 *	36	91,67	90,30	82,0	33,0	49,0	15
	72N038032	38 PD 8 32-6 *	38	96,77	95,39	87,0	33,0	49,0	15
	72N040032	40 PD 8 32-6 *	40	101,86	100,49	92,0	33,0	49,0	15
	72N044032	44 PD 8 32-6 *	44	112,05	110,67	102,0	33,0	49,0	15
	72N045032	45 PD 8 32-6 *	45	114,59	113,22	105,0	33,0	49,0	15
	72N048032	48 PD 8 32-6 *	48	122,23	120,86	112,0	33,0	49,0	15
	72N050032	50 PD 8 32-6 *	50	127,32	125,95	118,0	33,0	49,0	15
	72N052032	52 PD 8 32-6 *	52	132,42	131,04	123,0	33,0	49,0	15
	72N056032	56 PD 8 32-6 *	56	142,60	141,23	133,0	33,0	49,0	15
	72N060032	60 PD 8 32-6 *	60	152,79	151,42	143,0	33,0	49,0	15



6

PD 8 50 Passo - Pitch - Teilung - Pas - Paso 8 mm

Materiale Material Werkstoff Matériel Material	Codice Item number Codierung Code Código	Descrizione Designation Bezeichnung Désignation Referencia	N° denti No. of teeth Anzahl der Zähne Nombre de dents Cantidad de dientes	Dp mm	De mm	Dm mm	F mm	L mm	d mm
Acciaio - Steel - Stahl - Acier - Acero	72N018050	18 PD 8 50-6 *	18	45,84	44,46	38,0	51,0	63,0	-
	72N020050	20 PD 8 50-6 *	20	50,93	49,56	41,0	51,0	63,0	-
	72N022050	22 PD 8 50-6 *	22	56,02	54,66	46,0	51,0	63,0	-
	72N024050	24 PD 8 50-6 *	24	61,12	59,74	51,0	51,0	67,0	-
	72N025050	25 PD 8 50-6 *	25	63,66	62,29	54,0	51,0	67,0	-
	72N026050	26 PD 8 50-6 *	26	66,21	64,84	58,0	51,0	67,0	-
	72N028050	28 PD 8 50-6 *	28	71,30	69,93	62,0	51,0	67,0	-
	72N030050	30 PD 8 50-6 *	30	76,39	75,02	67,0	51,0	67,0	-
	72N032050	32 PD 8 50-6 *	32	81,49	80,12	72,0	51,0	67,0	15
	72N034050	34 PD 8 50-6 *	34	86,58	85,21	77,0	51,0	67,0	15
	72N036050	36 PD 8 50-6 *	36	91,67	90,30	82,0	51,0	67,0	15
	72N038050	38 PD 8 50-6 *	38	96,77	95,39	87,0	51,0	67,0	15
	72N040050	40 PD 8 50-6 *	40	101,86	100,49	92,0	51,0	67,0	15
	72N044050	44 PD 8 50-6 *	44	112,05	110,67	102,0	51,0	67,0	15
	72N045050	45 PD 8 50-6 *	45	114,59	113,22	105,0	51,0	67,0	15
	72N048050	48 PD 8 50-6 *	48	122,23	120,86	112,0	51,0	67,0	15
	72N050050	50 PD 8 50-6 *	50	127,32	125,95	118,0	51,0	67,0	15
	72N052050	52 PD 8 50-6 *	52	132,42	131,04	123,0	51,0	67,0	15
	72N056050	56 PD 8 50-6 *	56	142,60	141,23	133,0	51,0	67,0	15
	72N060050	60 PD 8 50-6 *	60	152,79	151,42	143,0	51,0	67,0	15

* A richiesta - On request - Auf Anfrage - Sur demande - Bajo consulta.



Pulegge dentate P-drive® monoblocco

Monobloc P-drive® timing pulleys

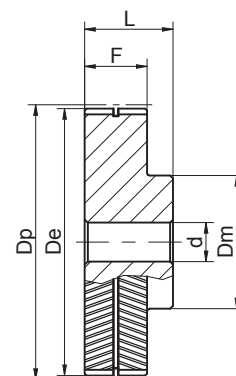
Monoblock P-drive® Zahnriemenscheiben

Poulies dentées P-drive® moyeu plein

Poleas dentadas P-drive® macizas

PD 8 64 Passo - Pitch - Teilung - Pas - Paso 8 mm

Materiale Material Werkstoff Matériel Material	Codice Item number Codierung Code Código	Descrizione Designation Bezeichnung Désignation Referencia	N° denti No. of teeth Anzahl der Zähne Nombre de dents Cantidad de dientes	Dp mm	De mm	Dm mm	F mm	L mm	d mm
Acciaio - Steel - Stahl - Acier - Acero	72N018064	18 PD 8 64-6 *	18	45,84	44,46	38,0	65,0	85,0	-
	72N020064	20 PD 8 64-6 *	20	50,93	49,56	41,0	65,0	85,0	-
	72N022064	22 PD 8 64-6 *	22	56,02	54,66	46,0	65,0	85,0	-
	72N024064	24 PD 8 64-6 *	24	61,12	59,74	51,0	65,0	85,0	-
	72N025064	25 PD 8 64-6 *	25	63,66	62,29	54,0	65,0	85,0	-
	72N026064	26 PD 8 64-6 *	26	66,21	64,84	58,0	65,0	85,0	-
	72N028064	28 PD 8 64-6 *	28	71,30	69,93	62,0	65,0	85,0	-
	72N030064	30 PD 8 64-6 *	30	76,39	75,02	67,0	65,0	85,0	-
	72N032064	32 PD 8 64-6 *	32	81,49	80,12	72,0	65,0	85,0	-
	72N034064	34 PD 8 64-6 *	34	86,58	85,21	77,0	65,0	85,0	15
	72N036064	36 PD 8 64-6 *	36	91,67	90,30	82,0	65,0	85,0	15
	72N038064	38 PD 8 64-6 *	38	96,77	95,39	87,0	65,0	85,0	15
	72N040064	40 PD 8 64-6 *	40	101,86	100,49	92,0	65,0	85,0	15
	72N044064	44 PD 8 64-6 *	44	112,05	110,67	102,0	65,0	85,0	15
	72N045064	45 PD 8 64-6 *	45	114,59	113,22	105,0	65,0	85,0	15
	72N048064	48 PD 8 64-6 *	48	122,23	120,86	112,0	65,0	85,0	15
	72N050064	50 PD 8 64-6 *	50	127,32	125,95	118,0	65,0	85,0	15
	72N052064	52 PD 8 64-6 *	52	132,42	131,04	123,0	65,0	85,0	15
	72N056064	56 PD 8 64-6 *	56	142,60	141,23	133,0	65,0	85,0	15
	72N060064	60 PD 8 64-6 *	60	152,79	151,42	143,0	65,0	85,0	15



6



Pulegge dentate P-drive® monoblocco

Monobloc P-drive® timing pulleys

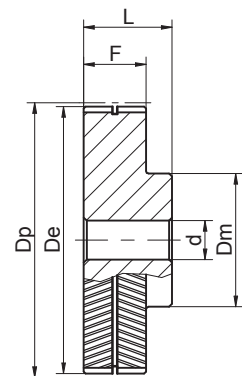
Monoblock P-drive® Zahnriemenscheiben

Poulies dentées P-drive® moyeu plein

Poleas dentadas P-drive® macizas

PD 14 35 Passo - Pitch - Teilung - Pas - Paso 14 mm

Materiale Material Werkstoff Matériel Material	Codice Item number Codierung Code Código	Descrizione Designation Bezeichnung Désignation Referencia	N° denti No. of teeth Anzahl der Zähne Nombre de dents Cantidad de dientes	Dp mm	De mm	Dm mm	F mm	L mm	d mm
Acciaio - Steel - Stahl - Acier - Acero	72S028035	28 PD14 35-6 *	28	124,78	121,98	105,0	37,0	53,0	25
	72S030035	30 PD14 35-6 *	30	133,69	130,90	114,0	37,0	53,0	25
	72S032035	32 PD14 35-6 *	32	142,60	139,81	123,0	37,0	53,0	25
	72S034035	34 PD14 35-6 *	34	151,52	148,72	132,0	37,0	53,0	25
	72S036035	36 PD14 35-6 *	36	160,43	157,63	141,0	37,0	53,0	25
	72S038035	38 PD14 35-6 *	38	169,34	166,55	150,0	37,0	53,0	25
	72S040035	40 PD14 35-6 *	40	178,25	175,46	159,0	37,0	53,0	25
	72S043035	43 PD14 35-6 *	43	191,62	188,83	172,0	37,0	53,0	25
	72S045035	45 PD14 35-6 *	45	200,54	197,74	181,0	37,0	53,0	25
	72S048035	48 PD14 35-6 *	48	213,90	211,11	195,0	37,0	53,0	25



6

PD 14 52,5 Passo - Pitch - Teilung - Pas - Paso 14 mm

Materiale Material Werkstoff Matériel Material	Codice Item number Codierung Code Código	Descrizione Designation Bezeichnung Désignation Referencia	N° denti No. of teeth Anzahl der Zähne Nombre de dents Cantidad de dientes	Dp mm	De mm	Dm mm	F mm	L mm	d mm
Acciaio - Steel - Stahl - Acier - Acero	72S028052	28 PD14 52,5-6 *	28	124,78	121,98	109,0	54,5	74,5	25
	72S030052	30 PD14 52,5-6 *	30	133,69	130,90	117,5	54,5	74,5	25
	72S032052	32 PD14 52,5-6 *	32	142,60	139,81	126,5	54,5	74,5	25
	72S034052	34 PD14 52,5-6 *	34	151,52	148,72	135,5	54,5	74,5	25
	72S036052	36 PD14 52,5-6 *	36	160,43	157,63	141,0	54,5	70,5	25
	72S038052	38 PD14 52,5-6 *	38	169,34	166,55	150,0	54,5	70,5	25
	72S040052	40 PD14 52,5-6 *	40	178,25	175,46	159,0	54,5	70,5	25
	72S043052	43 PD14 52,5-6 *	43	191,62	188,83	172,0	54,5	70,5	25
	72S045052	45 PD14 52,5-6 *	45	200,54	197,74	181,0	54,5	70,5	25
	72S048052	48 PD14 52,5-6 *	48	213,90	211,11	195,0	54,5	70,5	25

* A richiesta - On request - Auf Anfrage - Sur demande - Bajo consulta.



Pulegge dentate P-drive® monoblocco

Monobloc P-drive® timing pulleys

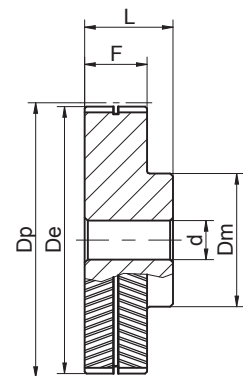
Monoblock P-drive® Zahnriemenscheiben

Poulies dentées P-drive® moyeu plein

Poleas dentadas P-drive® macizas

PD 14 70 Passo - Pitch - Teilung - Pas - Paso 14 mm

Materiale Material Werkstoff Matériel Material	Codice Item number Codierung Code Código	Descrizione Designation Bezeichnung Désignation Referencia	N° denti No. of teeth Anzahl der Zähne Nombre de dents Cantidad de dientes	Dp mm	De mm	Dm mm	F mm	L mm	d mm
Acciaio - Steel - Stahl - Acier - Acero	72S028070	28 PD14 70-6 *	28	124,78	121,98	109,0	72,0	92,0	25
	72S030070	30 PD14 70-6 *	30	133,69	130,90	117,5	72,0	92,0	25
	72S032070	32 PD14 70-6 *	32	142,60	139,81	126,5	72,0	98,0	25
	72S034070	34 PD14 70-6 *	34	151,52	148,72	135,5	72,0	98,0	25
	72S036070	36 PD14 70-6 *	36	160,43	157,63	144,0	72,0	98,0	25
	72S038070	38 PD14 70-6 *	38	169,34	166,55	153,0	72,0	98,0	25
	72S040070	40 PD14 70-6 *	40	178,25	175,46	162,0	72,0	98,0	25
	72S043070	43 PD14 70-6 *	43	191,62	188,83	174,0	72,0	88,0	25
	72S045070	45 PD14 70-6 *	45	200,54	197,74	183,0	72,0	88,0	25
	72S048070	48 PD14 70-6 *	48	213,90	211,11	197,0	72,0	88,0	25



6

PD 14 105 Passo - Pitch - Teilung - Pas - Paso 14 mm

Materiale Material Werkstoff Matériel Material	Codice Item number Codierung Code Código	Descrizione Designation Bezeichnung Désignation Referencia	N° denti No. of teeth Anzahl der Zähne Nombre de dents Cantidad de dientes	Dp mm	De mm	Dm mm	F mm	L mm	d mm
Acciaio - Steel - Stahl - Acier - Acero	72S028105	28 PD14 105-6 *	28	124,78	121,98	109,0	107,0	133,0	25
	72S030105	30 PD14 105-6 *	30	133,69	130,90	117,5	107,0	133,0	25
	72S032105	32 PD14 105-6 *	32	142,60	139,81	126,5	107,0	133,0	25
	72S034105	34 PD14 105-6 *	34	151,52	148,72	135,5	107,0	133,0	25
	72S036105	36 PD14 105-6 *	36	160,43	157,63	144,0	107,0	133,0	25
	72S038105	38 PD14 105-6 *	38	169,34	166,55	153,0	107,0	133,0	25
	72S040105	40 PD14 105-6 *	40	178,25	175,46	162,0	107,0	133,0	25
	72S043105	43 PD14 105-6 *	43	191,62	188,83	174,0	107,0	133,0	25
	72S045105	45 PD14 105-6 *	45	200,54	197,74	183,0	107,0	123,0	25
	72S048105	48 PD14 105-6 *	48	213,90	211,11	197,0	107,0	123,0	25

* A richiesta - On request - Auf Anfrage - Sur demande - Bajo consulta.



Standard- und Sondergleitlager beziehen über
www.caspar-gleitlager.de

